

WEIGHT (LBS)	INDUCTANCE	LOSS (WATTS)
98	.066mH	531

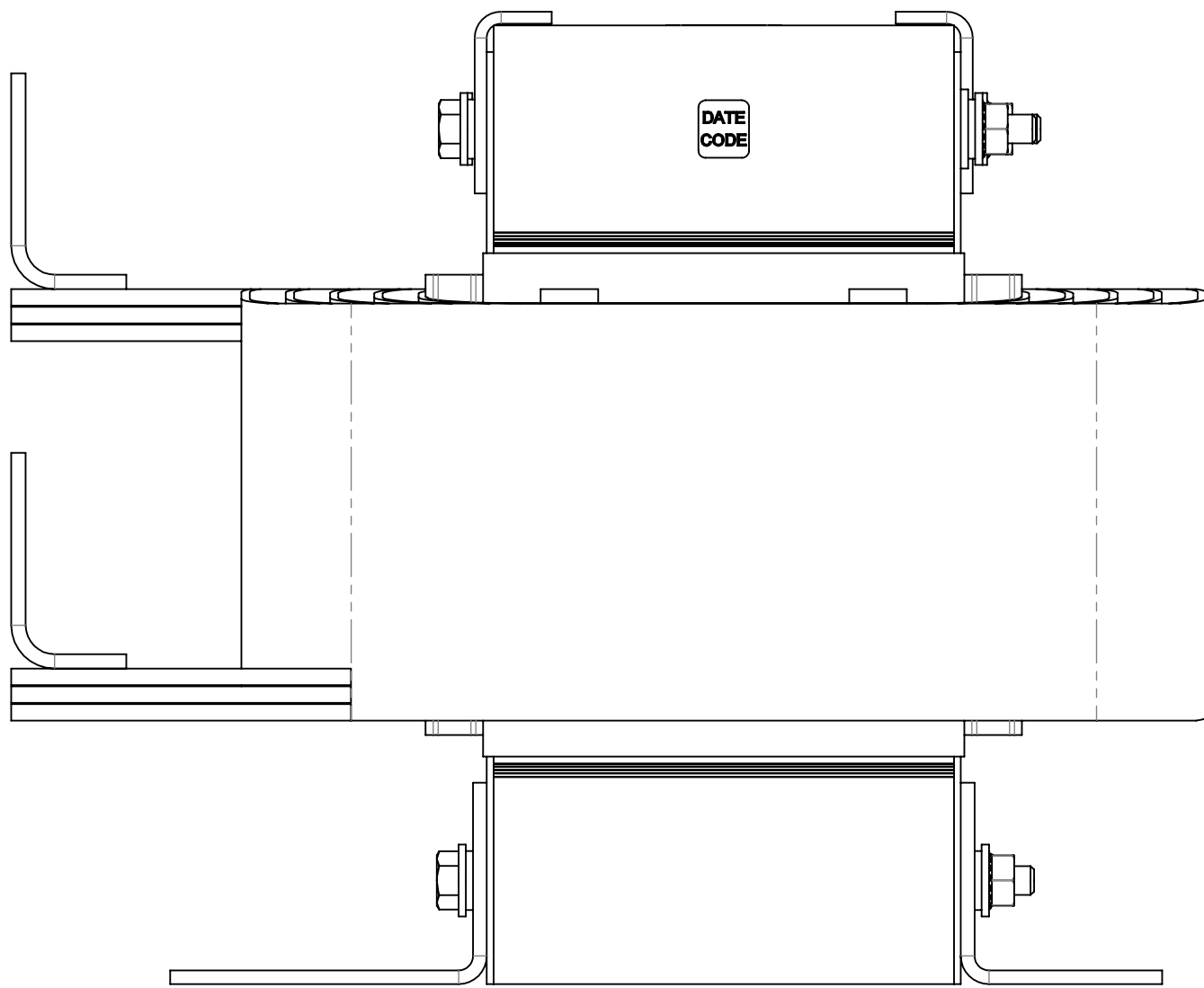
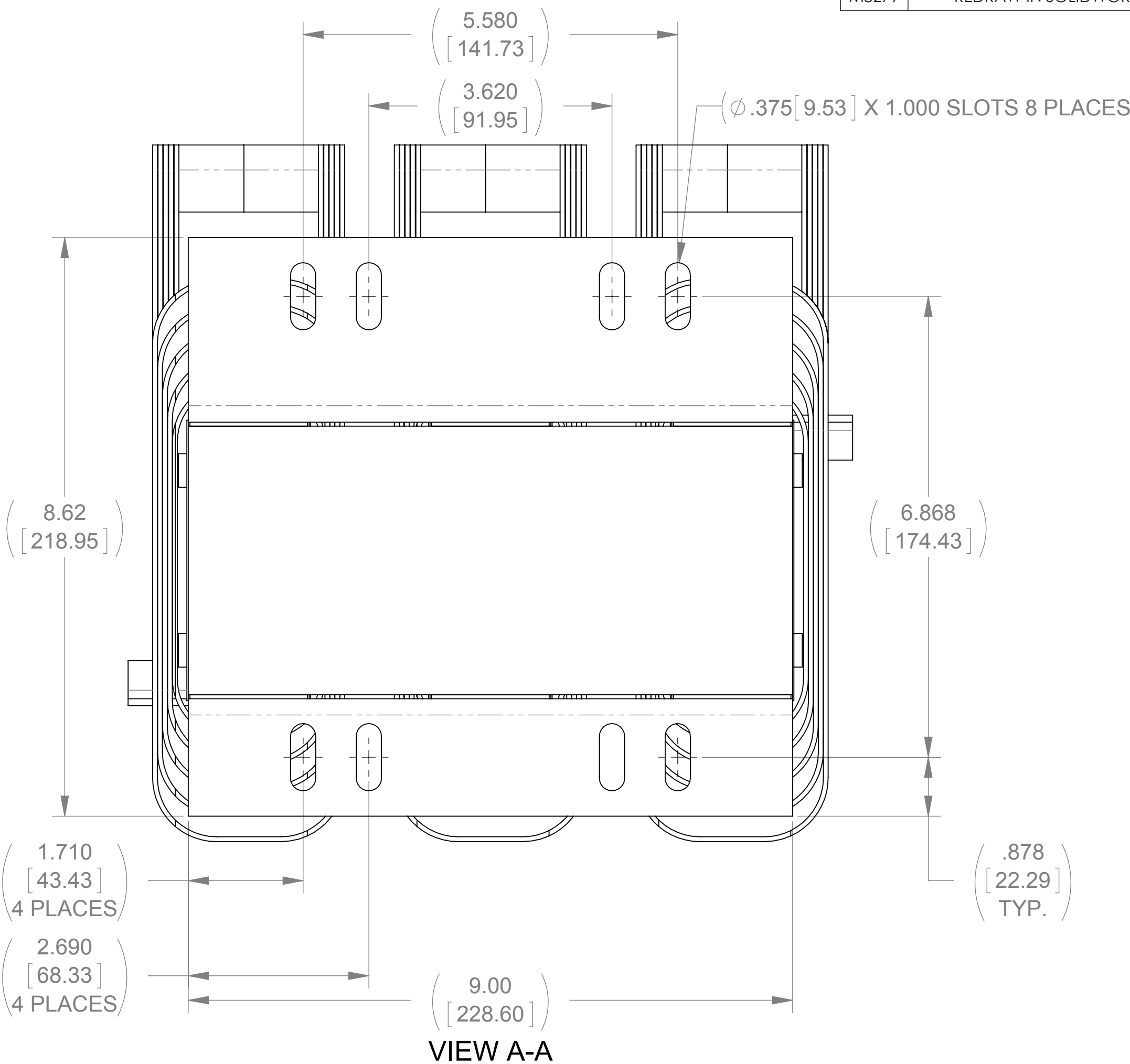
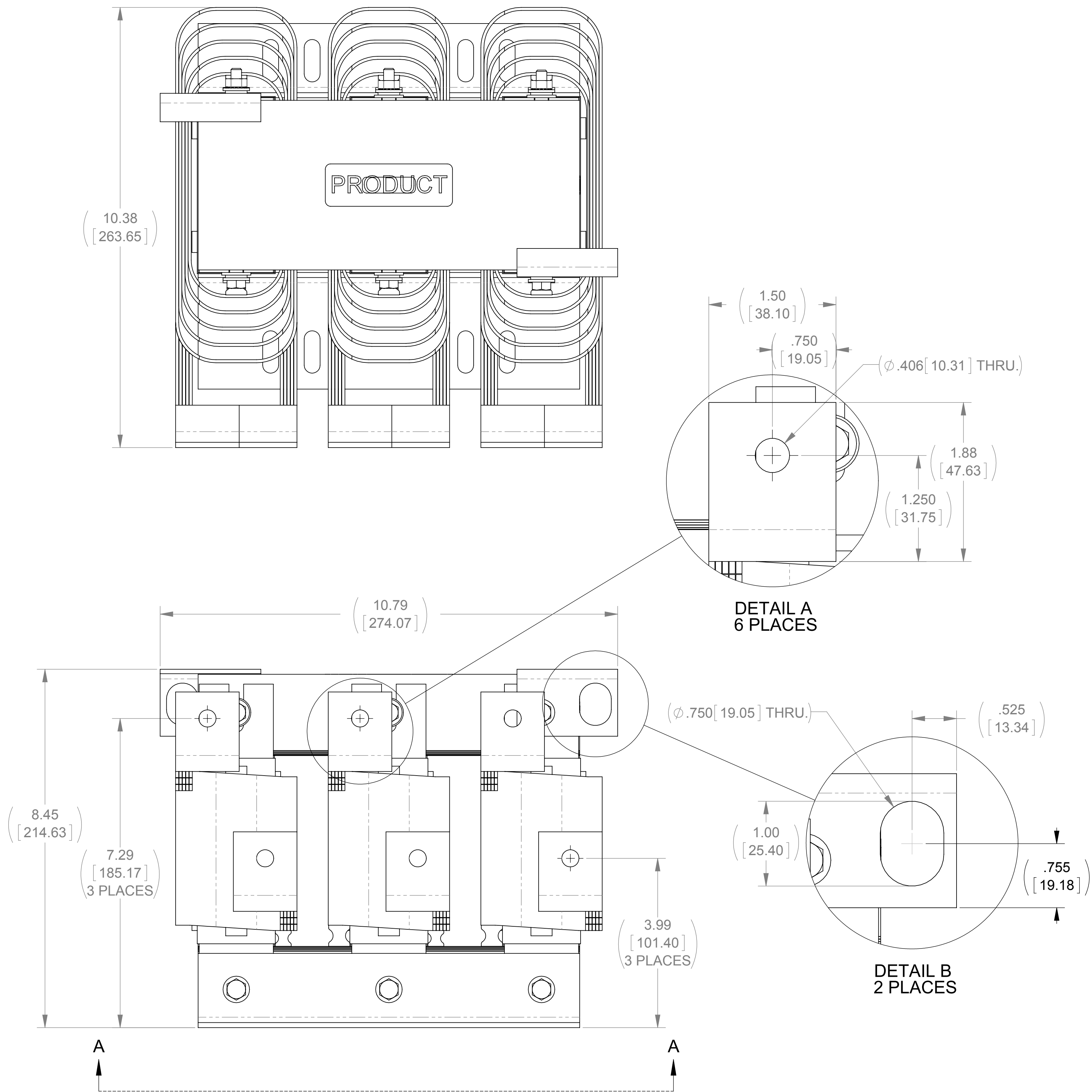
ECO No	DESCRIPTION	REV BY	DATE
M8279	REDRAW IN SOLIDWORKS	JP	11/05/12

D

C

B

A



THE COMPONENT, PART OR ASSEMBLY DESCRIBED IN THIS DOCUMENT MUST COMPLY WITH THE EU (EUROPEAN UNION) DIRECTIVE RoHS		MATERIAL		CONFIDENTIAL AND PROPRIETARY INFORMATION THIS DOCUMENT CONTAINS CONFIDENTIAL AND PROPRIETARY INFORMATION OF MTE CORPORATION AND MAY NOT BE USED, COPIED OR DISCLOSED TO OTHERS EXCEPT WITH THE AUTHORIZED WRITTEN PERMISSION OF MTE CORPORATION		
				DESCRIPTION		
CONTAINS <0.1% OF ANY SVHC BY WEIGHT PER REACH REGULATION				3 PHASE REACTOR		
UNLESS OTHERWISE SPECIFIED DIMENSIONS ARE IN INCHES [MM] TOLERANCES ARE: ANGLES: $\pm 1^\circ$ 1 PLACE .X: $\pm .1 [2.5]$ 2 PLACE .XX: $\pm .03 [0.76]$ 3 PLACE .XXX: $\pm .010 [0.254]$		DRAWN	RKT	DATE	07/13/09	SIZE D
		CHECKED	TM	DATE	11/05/12	
		APPROVED	TM	DATE	11/05/12	
<div>MTE</div> <div>AN BL POWER ELECTRONICS COMPANY</div> <div>N83 W13330 Leon Road Menomonee Falls, WI 53051 USA 800.455.4683 262.253.8200</div>		DWG No		CD RLW-041403		REV 04
		SCALE		4:6		SHEET 1 OF 1