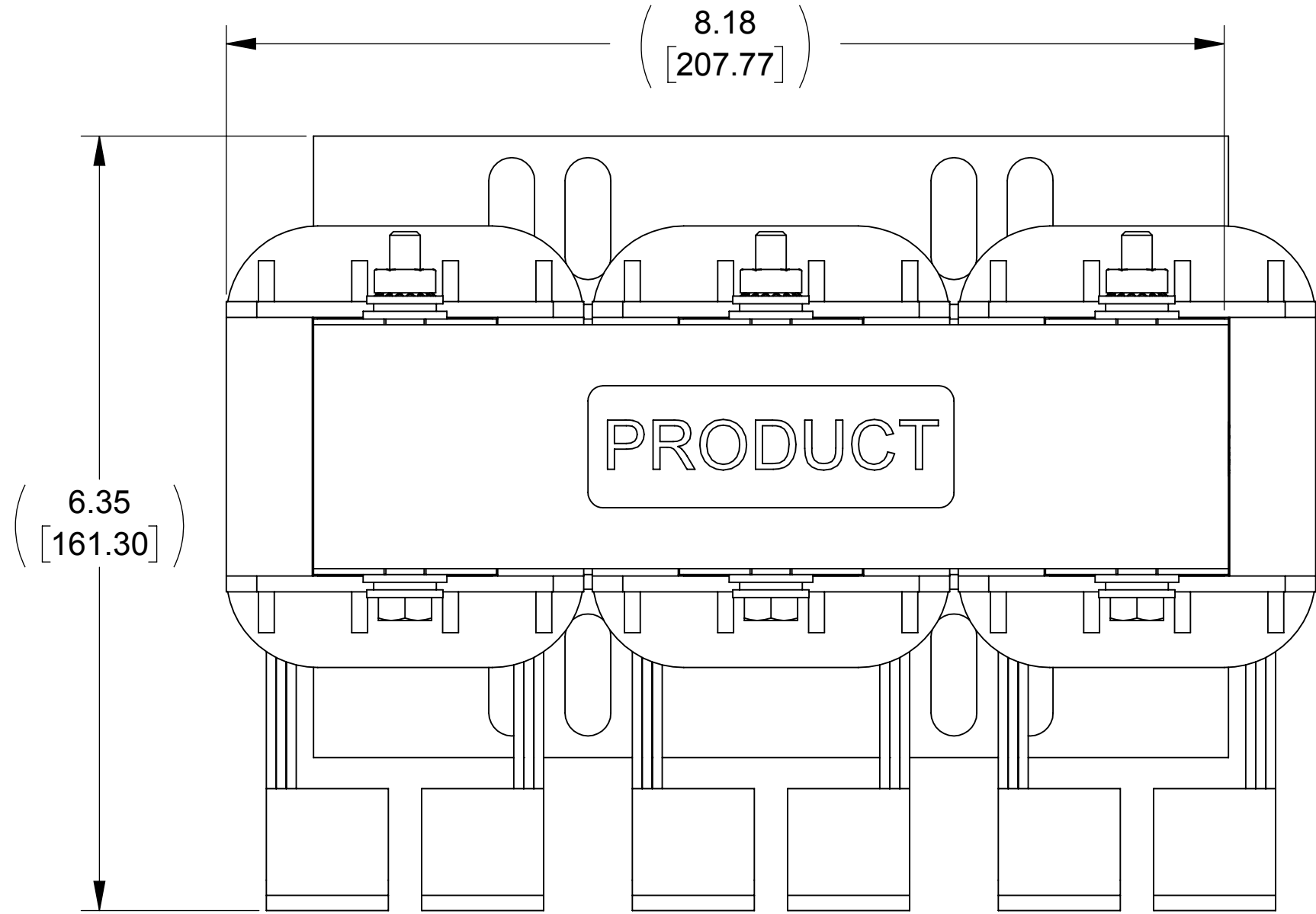
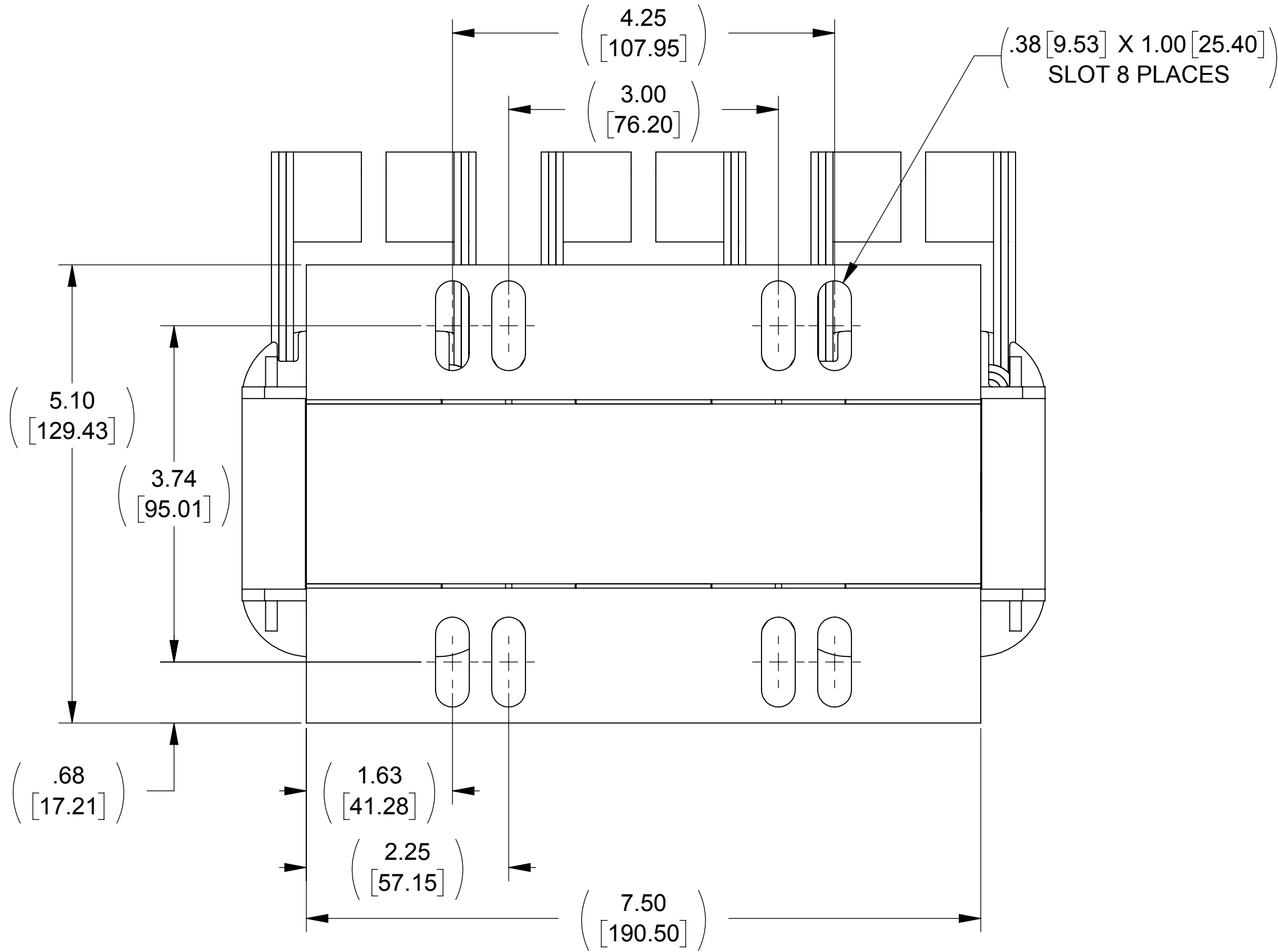


WEIGHT (LBS)	INDUCTANCE	LOSS (WATTS)
34	.060mH	159

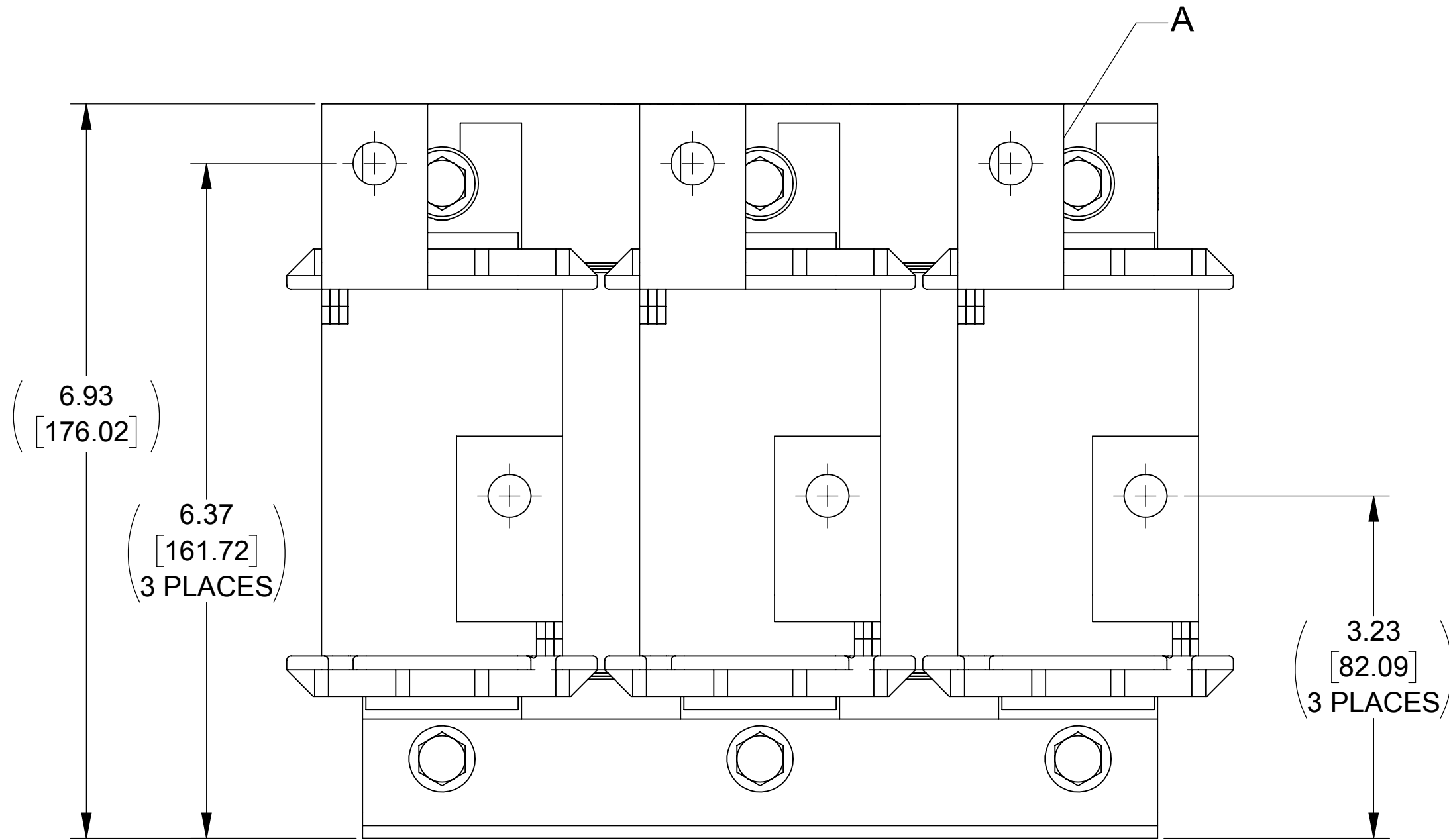
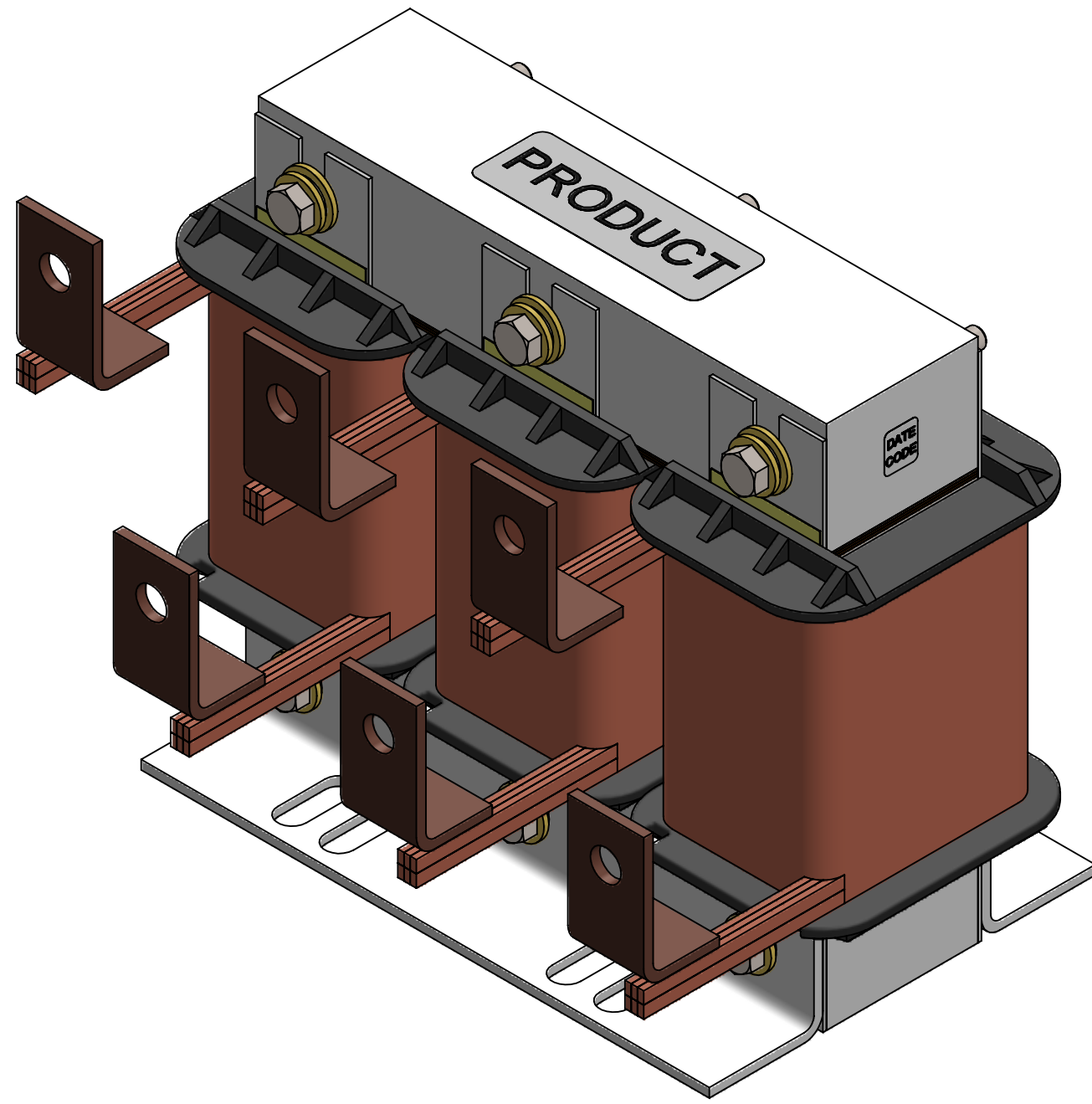
ECO No	DESCRIPTION	REV BY	DATE
M11800	UPDATED DRAWING STANDARDS	JD	05/24/19



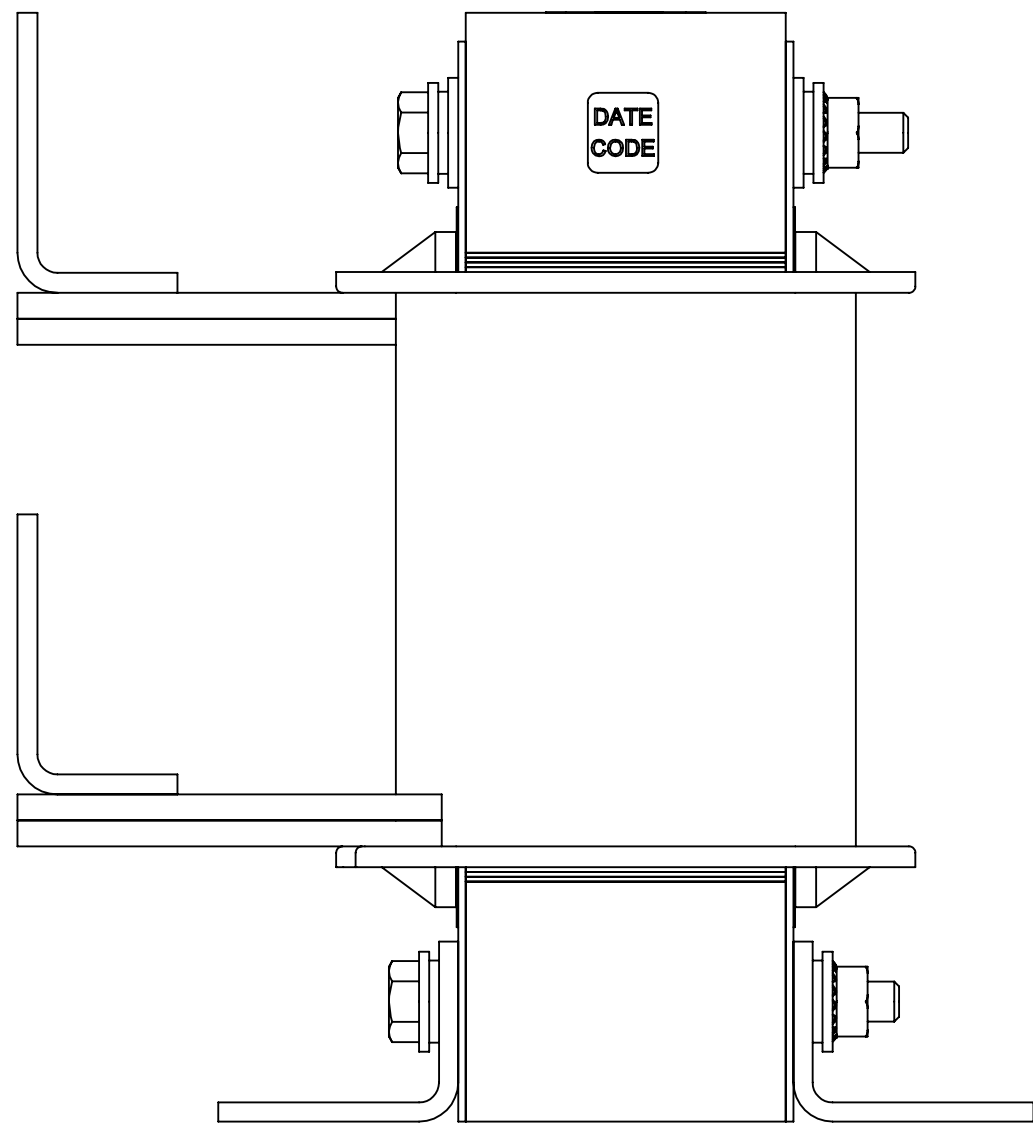
TOP VIEW



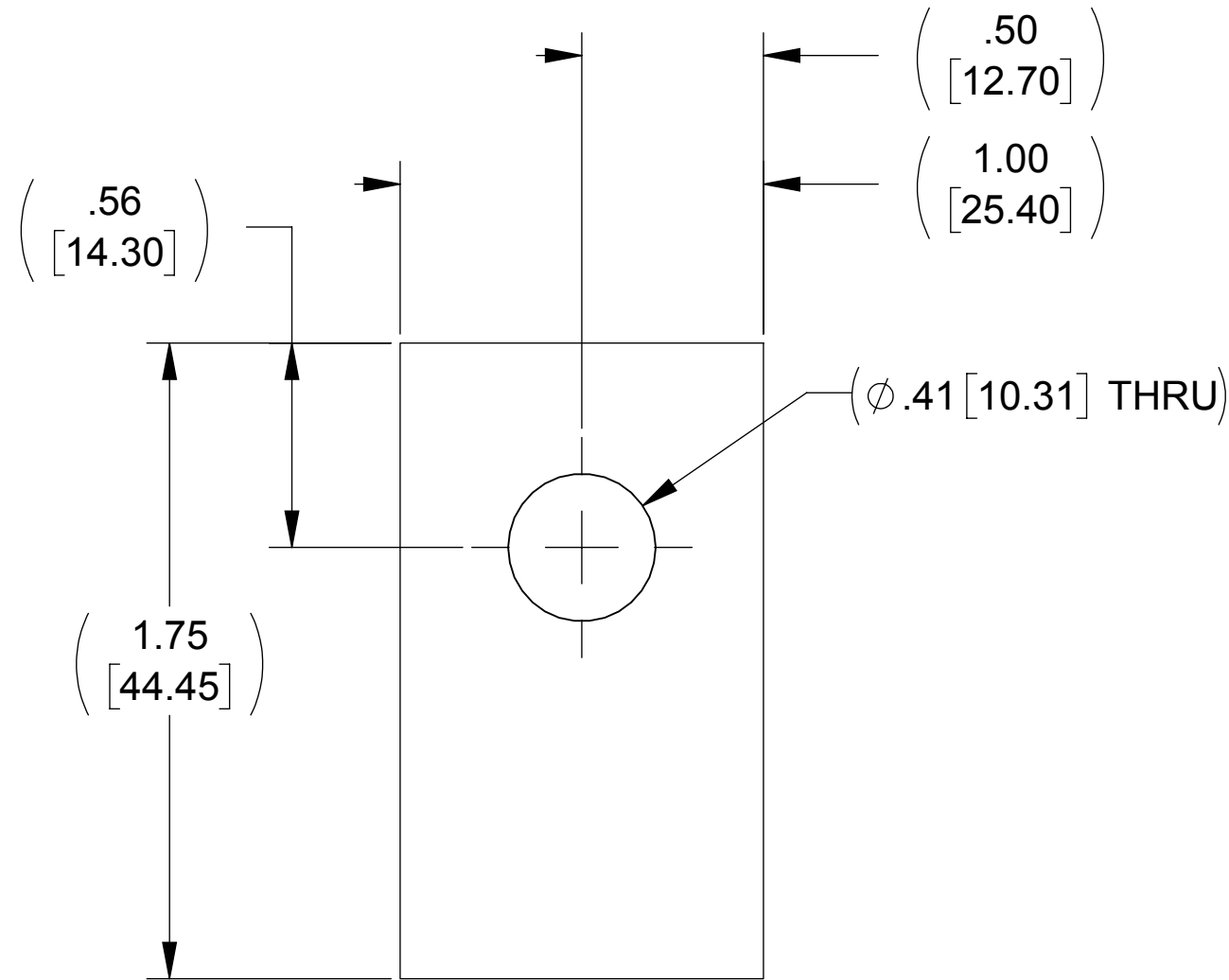
BOTTOM VIEW



FRONT VIEW



SIDE VIEW



DETAIL A  
(6 PLACES)

NOTES:

1. REFER TO USER MANUAL FOR COMPLETE INSTALLATION INSTRUCTIONS.

THE COMPONENT, PART OR ASSEMBLY DESCRIBED IN THIS DOCUMENT MUST COMPLY WITH THE EU(EUROPEAN UNION) DIRECTIVE RoHS2		MATERIAL		CONFIDENTIAL AND PROPRIETARY INFORMATION THIS DOCUMENT CONTAINS CONFIDENTIAL AND PROPRIETARY INFORMATION OF MTE CORPORATION AND MAY NOT BE USED, COPIED OR DISCLOSED TO OTHERS EXCEPT WITH THE AUTHORIZED WRITTEN PERMISSION OF MTE CORPORATION	
CONTAINS <0.1% OF ANY SVHC BY WEIGHT PER REACH REGULATION				DESCRIPTION	
UNLESS OTHERWISE SPECIFIED DIMENSIONS ARE IN INCHES [MM] TOLERANCES ARE:  ANGLES: ± 1 °  1 PLACE .X: ± .1 [2.5]  2 PLACE .XX: ± .03 [0.76]  3 PLACE .XXX: ± .010 [0.254]		DRAWN RKT		DATE 05/06/09	
		CHECKED JD		DATE 05/24/19	
		APPROVED AK		DATE 05/29/19	
				SIZE D	
				DWG No. CD RLW-020001	
				REV 03	
				SCALE 5:6	
				SHEET 1 OF 1	