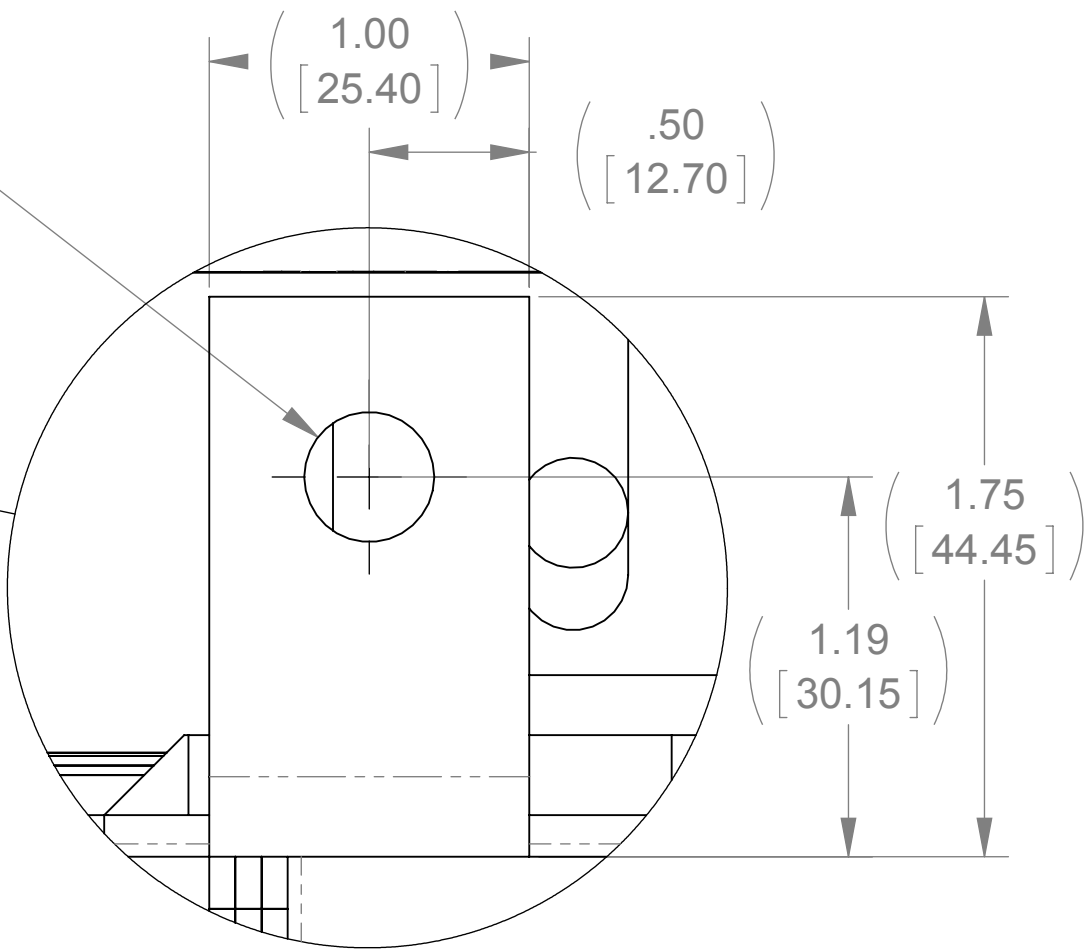
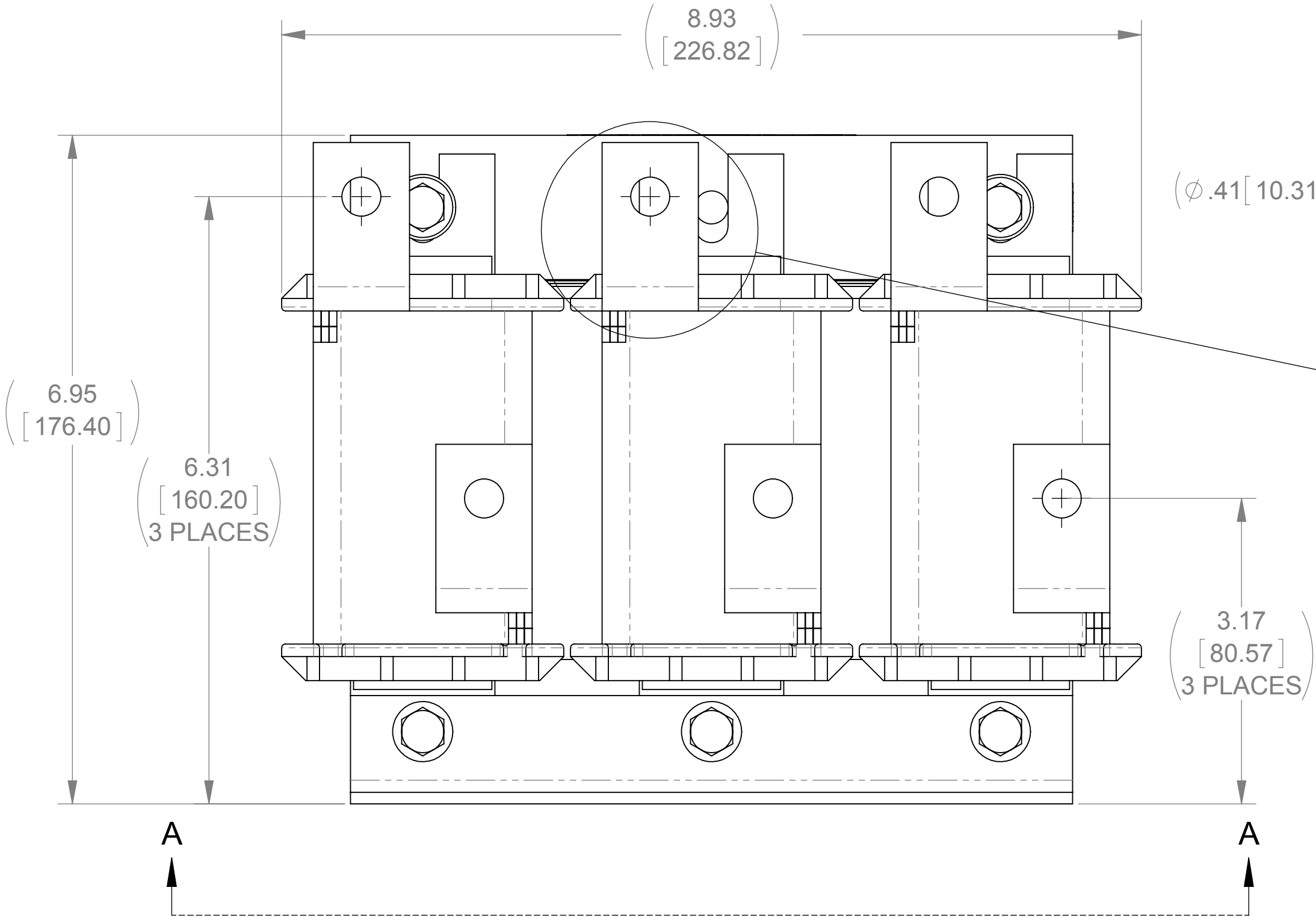
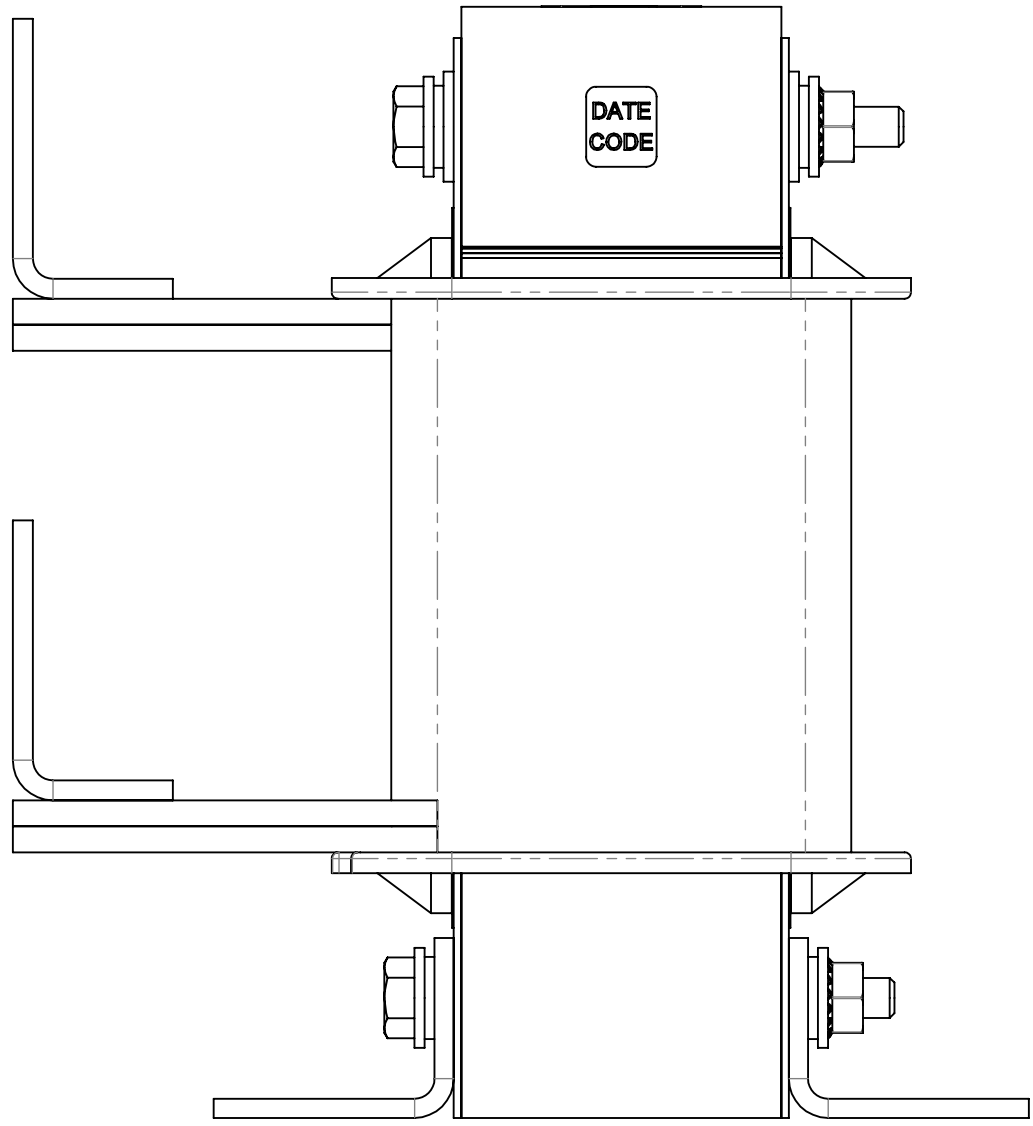


VIEW A-A



DETAIL A
6 PLACES



THE COMPONENT, PART OR ASSEMBLY DESCRIBED IN THIS DOCUMENT MUST COMPLY WITH THE EU(EUROPEAN UNION) DIRECTIVE RoHS		MATERIAL		CONFIDENTIAL AND PROPRIETARY INFORMATION THIS DOCUMENT CONTAINS CONFIDENTIAL AND PROPRIETARY INFORMATION OF MTE CORPORATION AND MAY NOT BE USED, COPIED OR DISCLOSED TO OTHERS EXCEPT WITH THE AUTHORIZED WRITTEN PERMISSION OF MTE CORPORATION																															
CONTAINS <0.1% OF ANY SVHC BY WEIGHT PER REACH REGULATION																																			
UNLESS OTHERWISE SPECIFIED DIMENSIONS ARE IN INCHES [MM] TOLERANCES ARE: ANGLES: ± 1 ° 1 PLACE .X: ± .1 [2.5] 2 PLACE .XX: ± .03 [0.76] 3 PLACE .XXX: ± .010 [0.254]		MTE <small>AN BL POWER ELECTRONICS COMPANY</small> N83 W13330 Leon Road Menomonee Falls, WI 53051 USA 800.455.4683 262.253.8200		<table><tr><td>DRAWN</td><td>DATE</td></tr><tr><td>RKT</td><td>04/08/09</td></tr><tr><td>CHECKED</td><td>DATE</td></tr><tr><td>TM</td><td>10/22/12</td></tr><tr><td>APPROVED</td><td>DATE</td></tr><tr><td>TM</td><td>10/22/12</td></tr></table>		DRAWN	DATE	RKT	04/08/09	CHECKED	DATE	TM	10/22/12	APPROVED	DATE	TM	10/22/12	<table><tr><td colspan="3">DESCRIPTION</td></tr><tr><td colspan="3">3 PHASE REACTOR</td></tr><tr><td>SIZE</td><td>DWG No.</td><td>REV</td></tr><tr><td>D</td><td>CD RLW-016001</td><td>02</td></tr><tr><td>SCALE</td><td colspan="2">SHEET 1 OF 1</td></tr></table>			DESCRIPTION			3 PHASE REACTOR			SIZE	DWG No.	REV	D	CD RLW-016001	02	SCALE	SHEET 1 OF 1	
DRAWN	DATE																																		
RKT	04/08/09																																		
CHECKED	DATE																																		
TM	10/22/12																																		
APPROVED	DATE																																		
TM	10/22/12																																		
DESCRIPTION																																			
3 PHASE REACTOR																																			
SIZE	DWG No.	REV																																	
D	CD RLW-016001	02																																	
SCALE	SHEET 1 OF 1																																		