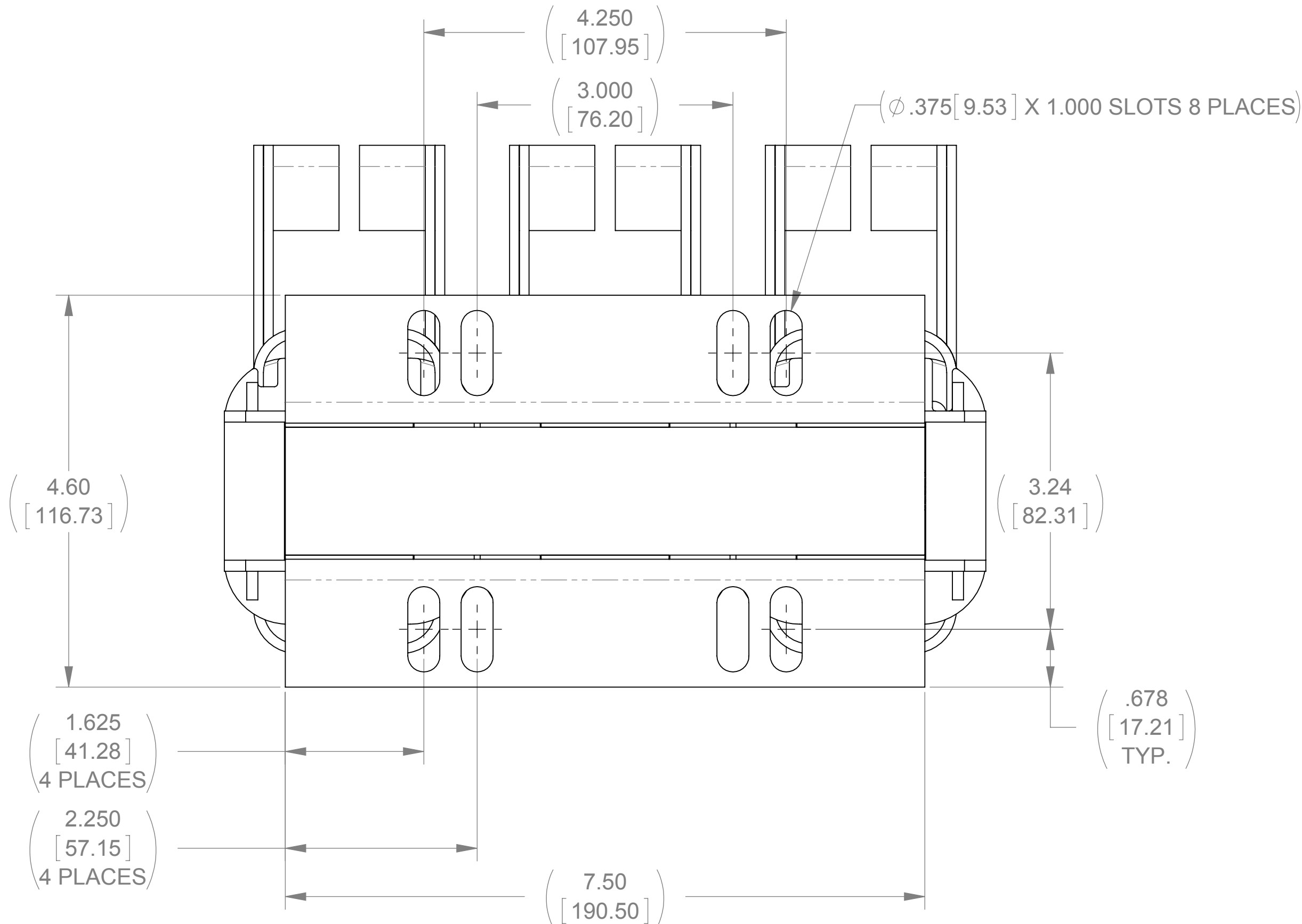
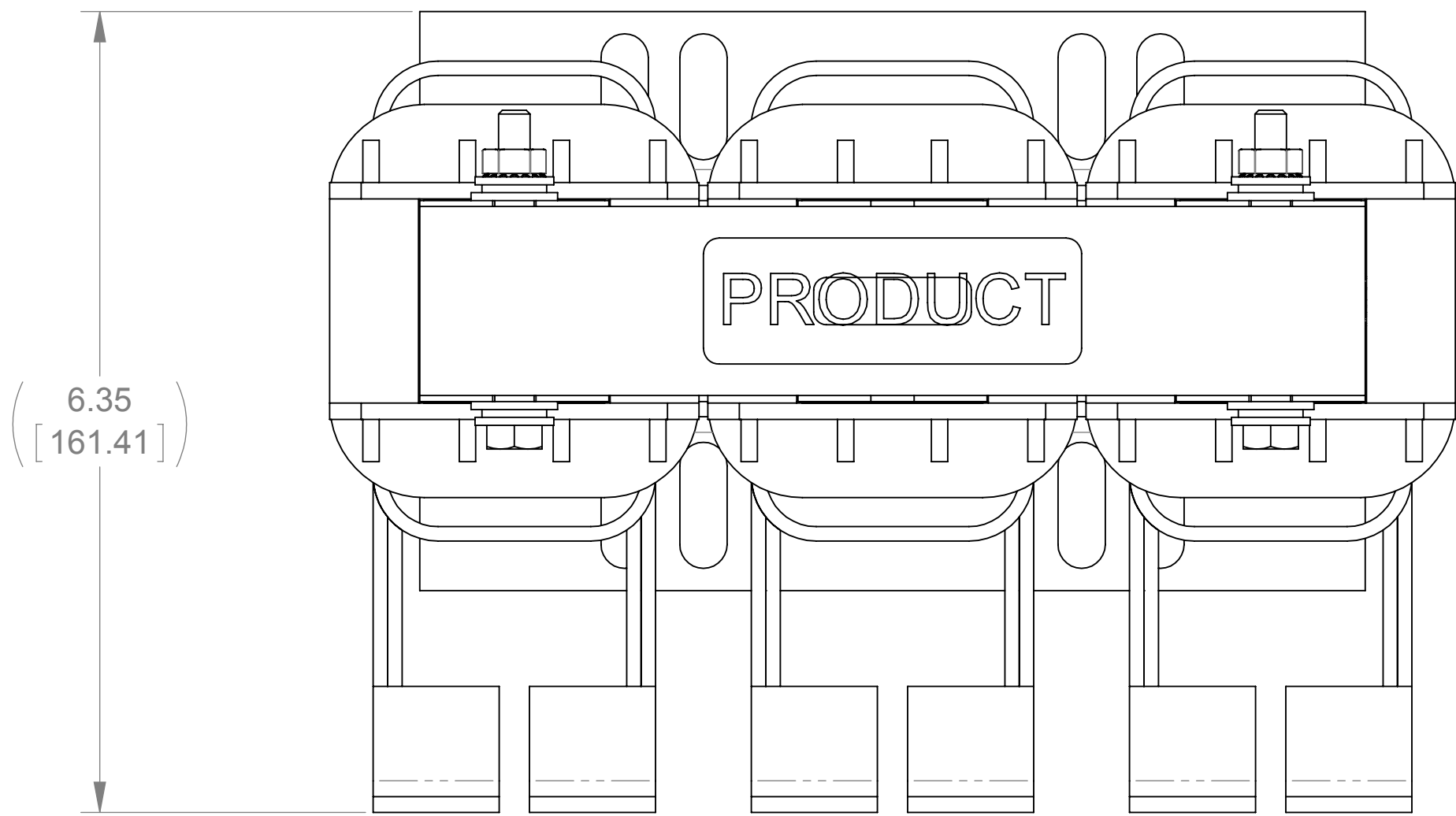
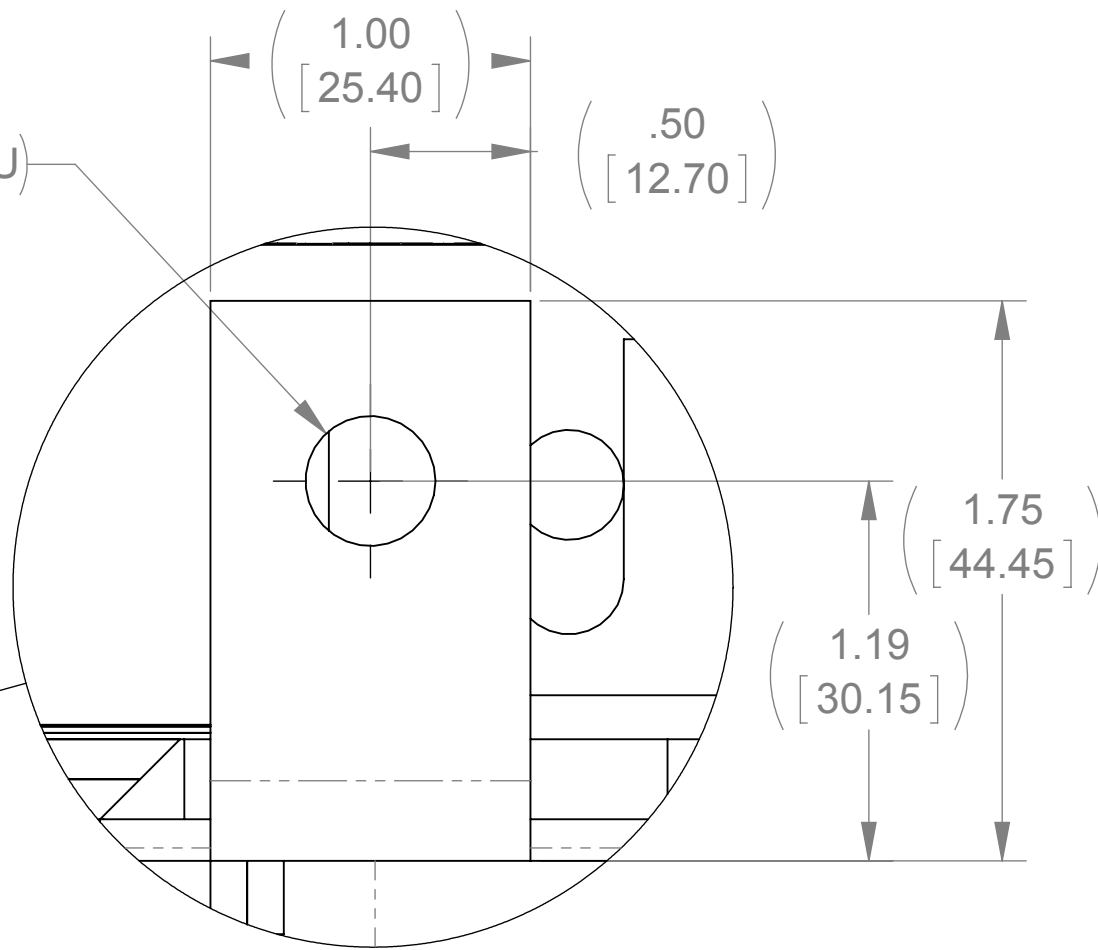
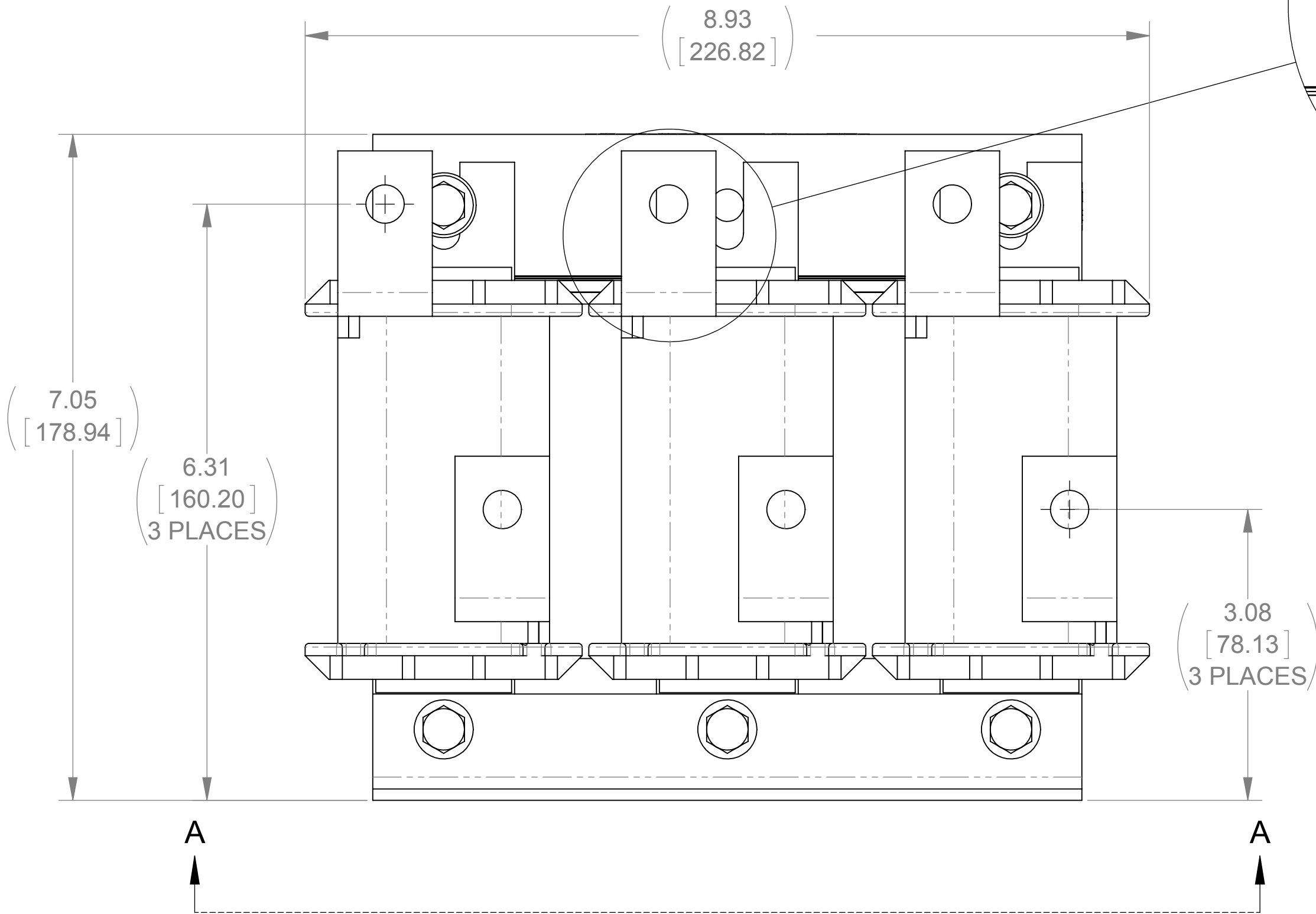


WEIGHT (LBS)	INDUCTANCE	LOSS (WATTS)
26	.095mH	132

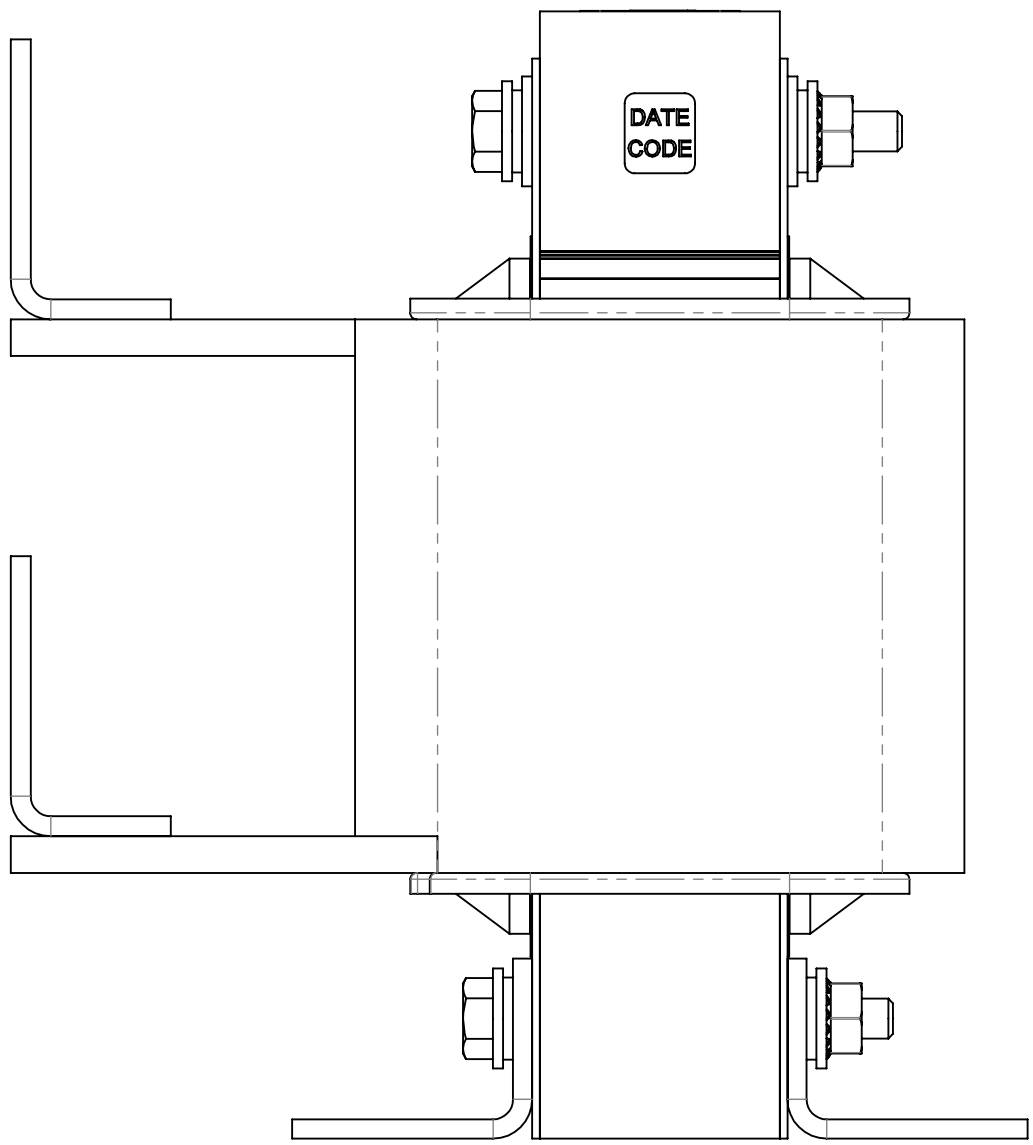
ECO No	DESCRIPTION	REV BY	DATE
M8240	REDRAW IN SOLIDWORKS	JP	10/12/12




VIEW A-A



DETAIL A  
6 PLACES



THE COMPONENT, PART OR ASSEMBLY DESCRIBED IN THIS DOCUMENT MUST COMPLY WITH THE EU(EUROPEAN UNION) DIRECTIVE RoHS		MATERIAL		CONFIDENTIAL AND PROPRIETARY INFORMATION THIS DOCUMENT CONTAINS CONFIDENTIAL AND PROPRIETARY INFORMATION OF MTE CORPORATION AND MAY NOT BE USED, COPIED OR DISCLOSED TO OTHERS EXCEPT WITH THE AUTHORIZED WRITTEN PERMISSION OF MTE CORPORATION			
CONTAINS <0.1% OF ANY SVHC BY WEIGHT PER REACH REGULATION				DESCRIPTION			
UNLESS OTHERWISE SPECIFIED DIMENSIONS ARE IN INCHES [MM] TOLERANCES ARE:  ANGLES: ± 1 °  1 PLACE .X: ± .1 [2.5]  2 PLACE .XX: ± .03 [0.76]  3 PLACE .XXX: ± .010 [0.254]		  N83 W13330 Leon Road Menomonee Falls, WI 53051 USA 800.455.4683 262.253.8200		DRAWN RKT		DATE 04/14/09	
				CHECKED TM		DATE 10/22/12	
				APPROVED TM		DATE 10/22/12	
				SIZE D	DWG No. CD RLW-013001		REV 02
				SCALE 5:6			SHEET 1 OF 1