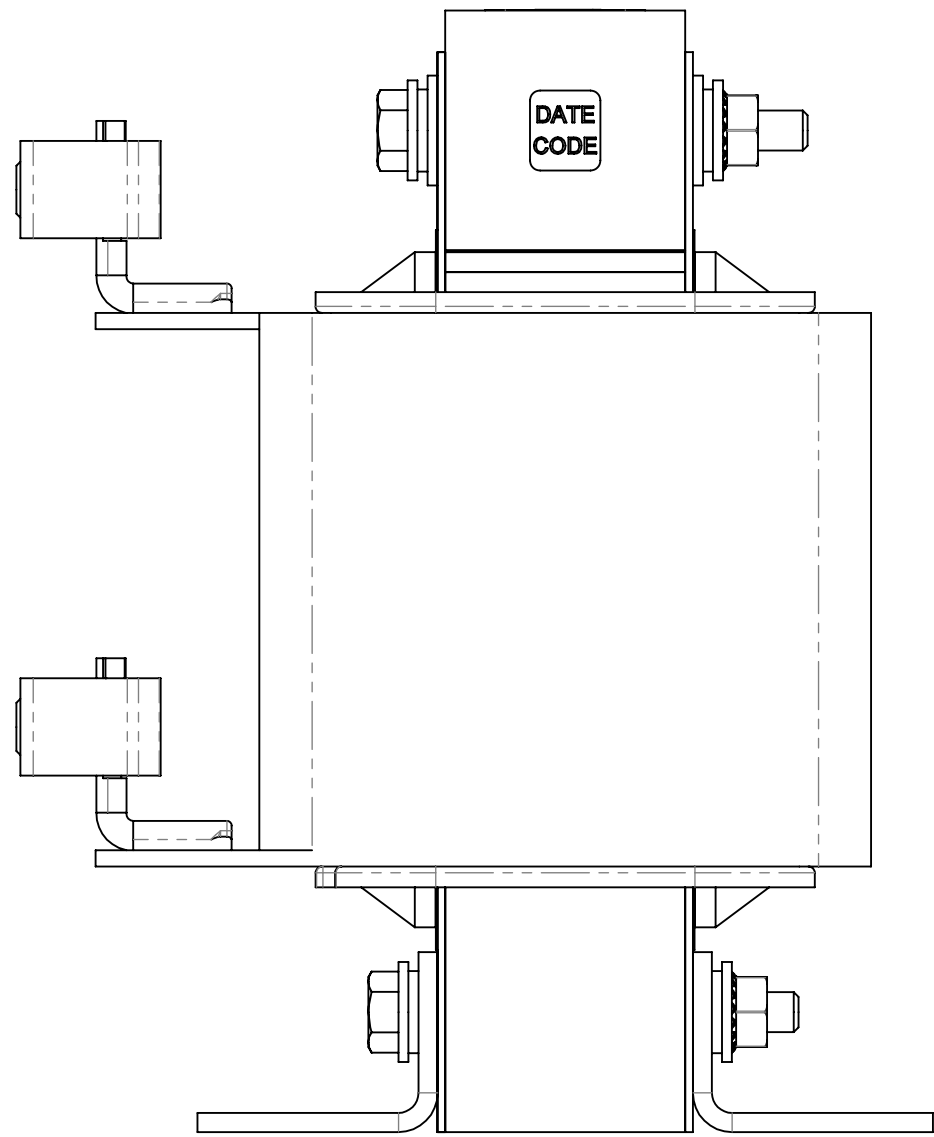
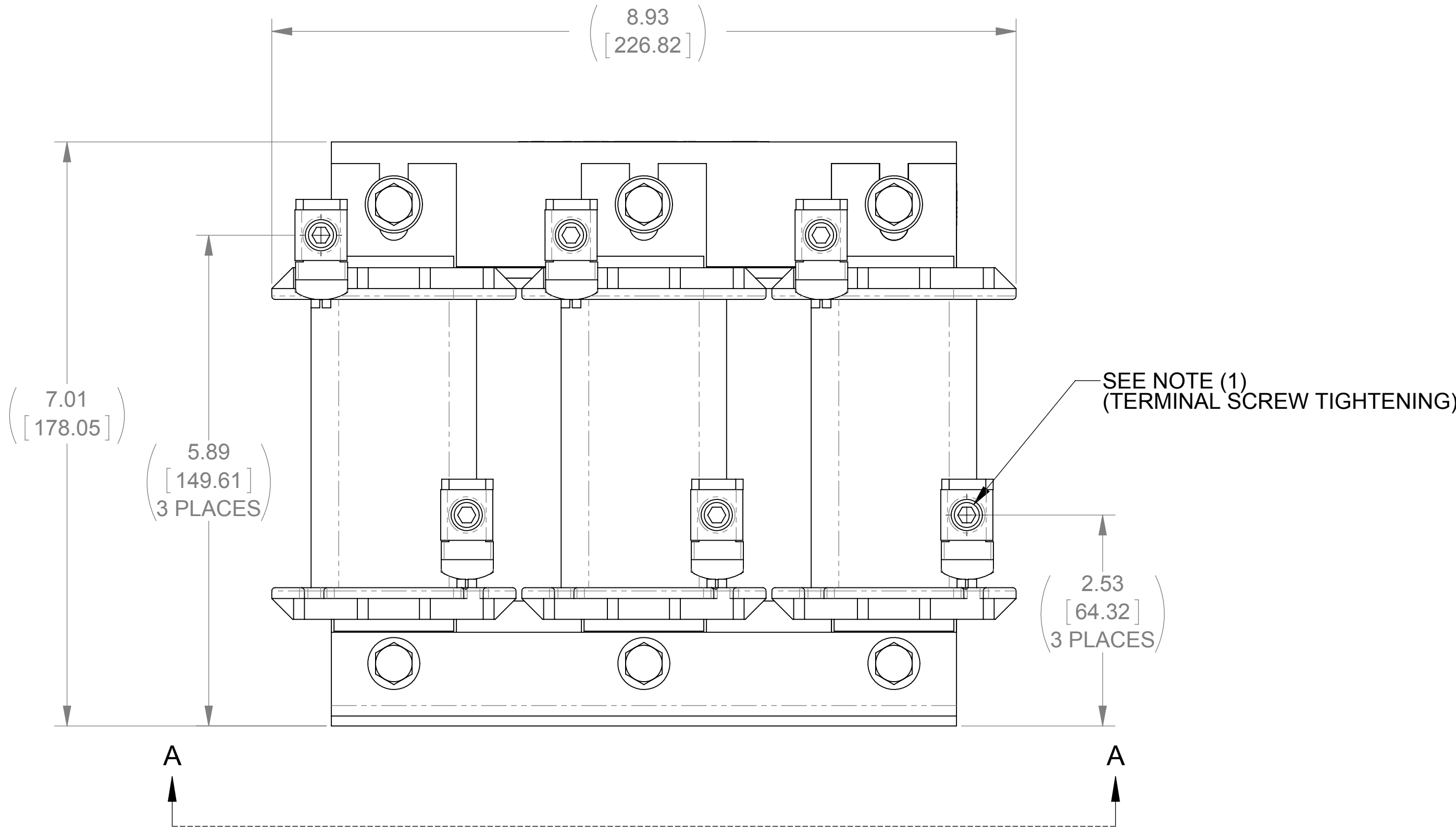



VIEW A-A



- NOTES:
- TERMINAL SCREW TIGHTENING TORQUE:
 - 6 - 4 (45) in-lbs MAX
 - 2 - 0 (50) in-lbs MAX
 - WIRE RANGE: 6 - 0 AWG

THE COMPONENT, PART OR ASSEMBLY DESCRIBED IN THIS DOCUMENT MUST COMPLY WITH THE EU(EUROPEAN UNION) DIRECTIVE RoHS		MATERIAL		CONFIDENTIAL AND PROPRIETARY INFORMATION THIS DOCUMENT CONTAINS CONFIDENTIAL AND PROPRIETARY INFORMATION OF MTE CORPORATION AND MAY NOT BE USED, COPIED OR DISCLOSED TO OTHERS EXCEPT WITH THE AUTHORIZED WRITTEN PERMISSION OF MTE CORPORATION			
CONTAINS <0.1% OF ANY SVHC BY WEIGHT PER REACH REGULATION				DESCRIPTION			
UNLESS OTHERWISE SPECIFIED DIMENSIONS ARE IN INCHES [MM] TOLERANCES ARE: ANGLES: ± 1 ° 1 PLACE .X: ± .1 [2.5] 2 PLACE .XX: ± .03 [0.76] 3 PLACE .XXX: ± .010 [0.254]		 N83 W13330 Leon Road Menomonee Falls, WI 53051 USA 800.455.4683 262.253.8200		3 PHASE REACTOR			
		DRAWN	DATE	SIZE	DWG No.	REV	
		BF	02/06/09				
		CHECKED	DATE	SCALE	5:6	SHEET 1 OF 1	
		TM	10/22/12				
		APPROVED	DATE	CD RLW-006505			
		TM	10/22/12	03			