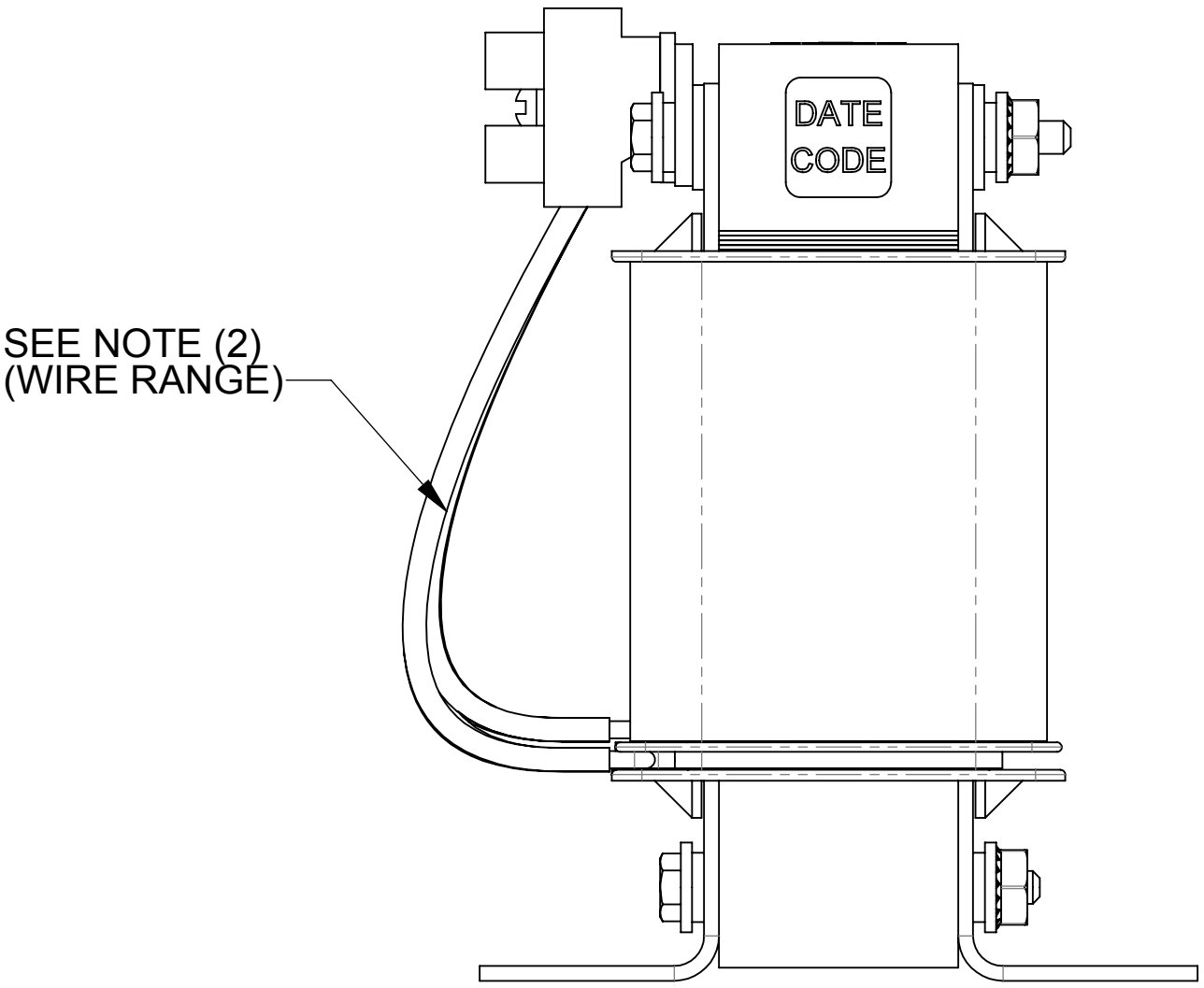
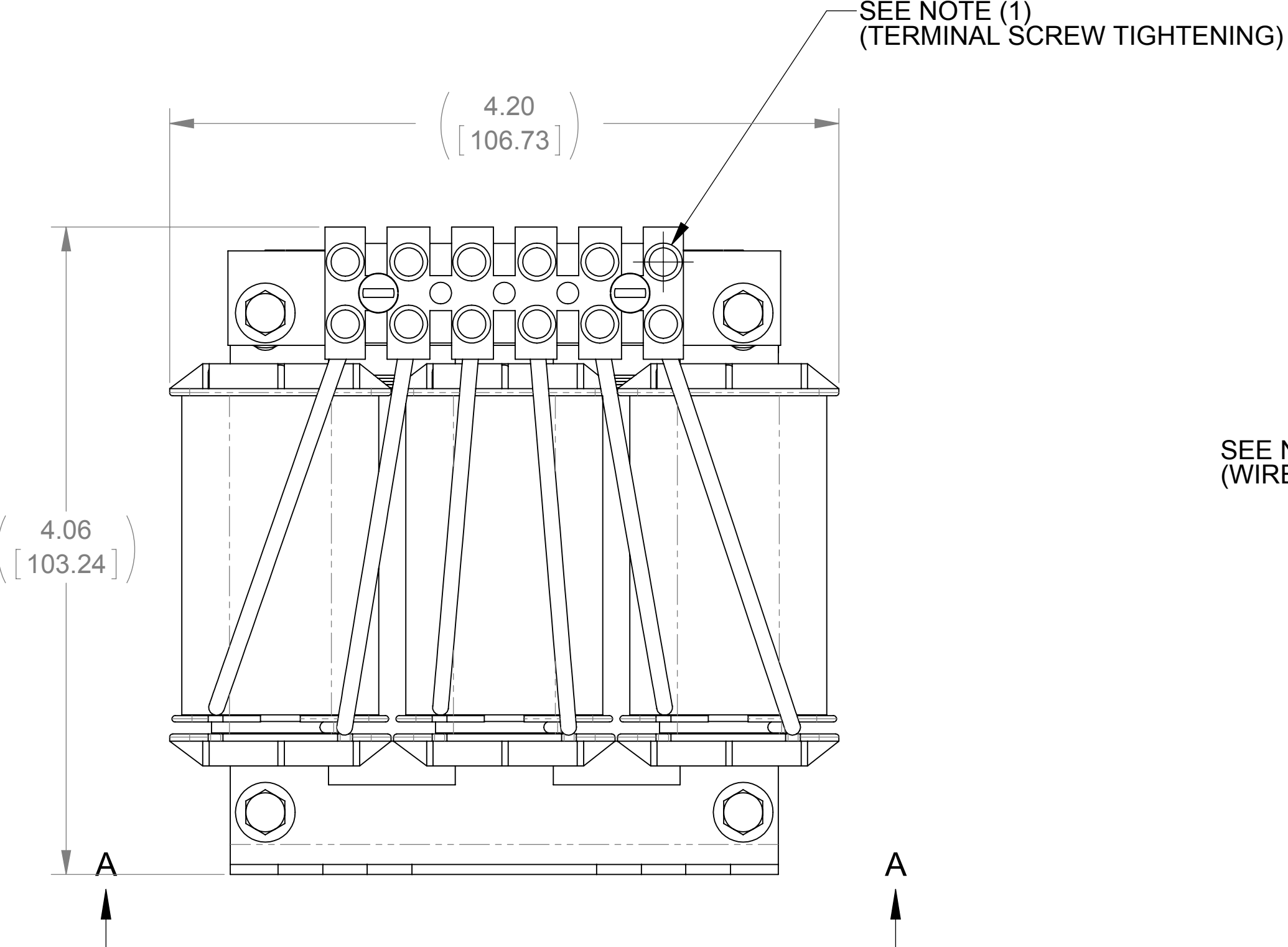
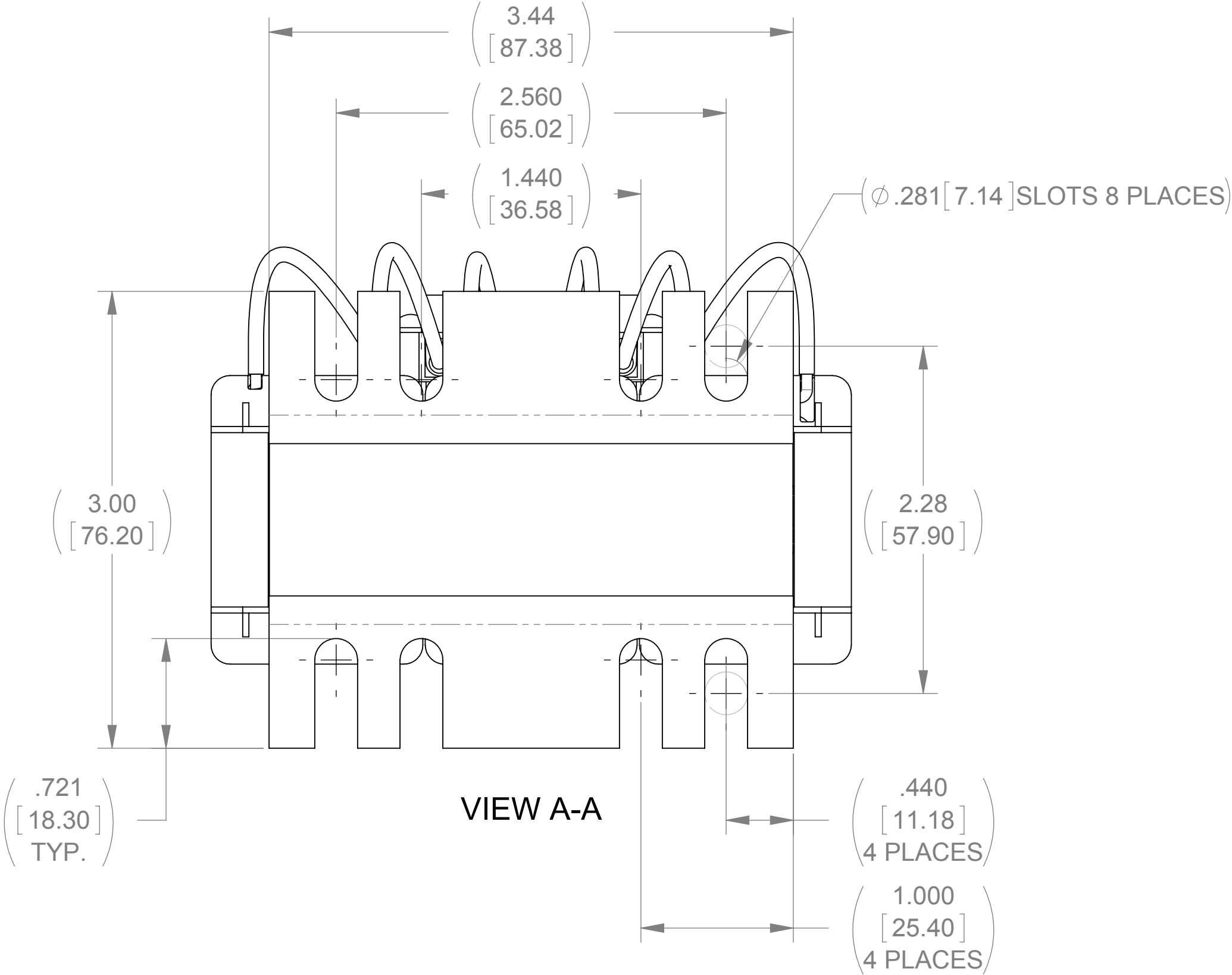
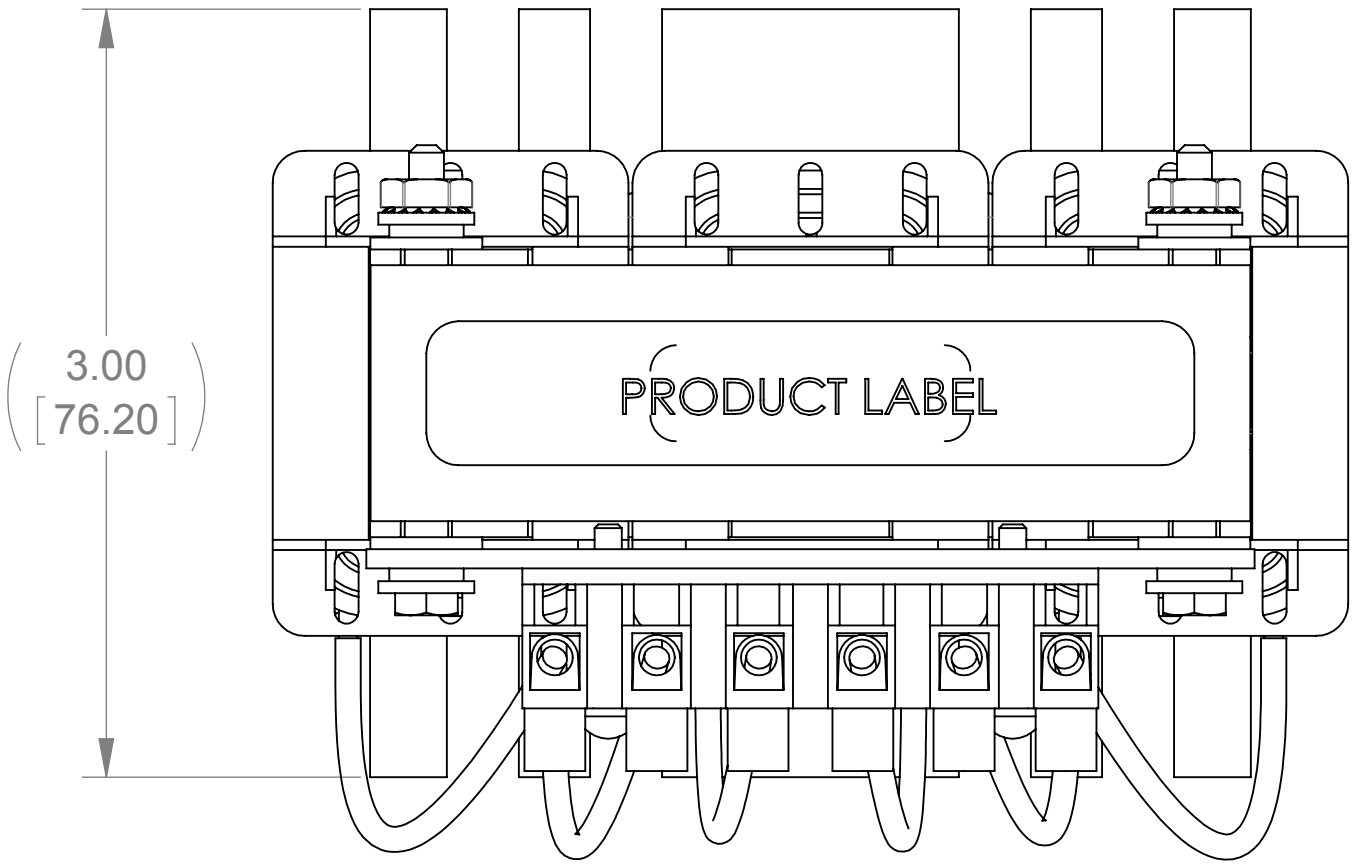


8	7	
WEIGHT (LBS)	INDUCTANCE	LOSS (WATTS)
4	1.6mH	48.2

ECO No	DESCRIPTION	REV BY	DATE
M8321	DIMENSION CHANGE	JP	12/14/12



- NOTES:
1. TERMINAL SCREW TIGHTENING TORQUE: 4.5 in-lbs MAX
 2. WIRE RANGE: 22 - 10 AWG

THE COMPONENT, PART OR ASSEMBLY DESCRIBED IN THIS DOCUMENT MUST COMPLY WITH THE EU (EUROPEAN UNION) DIRECTIVE RoHS		MATERIAL		CONFIDENTIAL AND PROPRIETARY INFORMATION	
CONTAINS <0.1% OF ANY SVHC BY WEIGHT PER REACH REGULATION				THIS DOCUMENT CONTAINS CONFIDENTIAL AND PROPRIETARY INFORMATION OF MTE CORPORATION AND MAY NOT BE USED, COPIED OR DISCLOSED TO OTHERS EXCEPT WITH THE AUTHORIZED WRITTEN PERMISSION OF MTE CORPORATION	
UNLESS OTHERWISE SPECIFIED DIMENSIONS ARE IN INCHES [MM] TOLERANCES ARE:				DESCRIPTION	
ANGLES: ± 1 °				LINE REACTOR	
1 PLACE .X: ± .1 [2.5]		DRAWN JP	DATE 08/31/12		
2 PLACE .XX: ± .03 [0.76]		CHECKED TM	DATE 12/21/12		
3 PLACE .XXX: ± .010 [0.254]		APPROVED TM	DATE 12/21/12		
				SIZE D	REV 06
				SCALE 4:3	SHEET 1 OF 1



N83 W13330 Leon Road
Menomonee Falls, WI 53051 USA
800.455.4683
262.253.8200