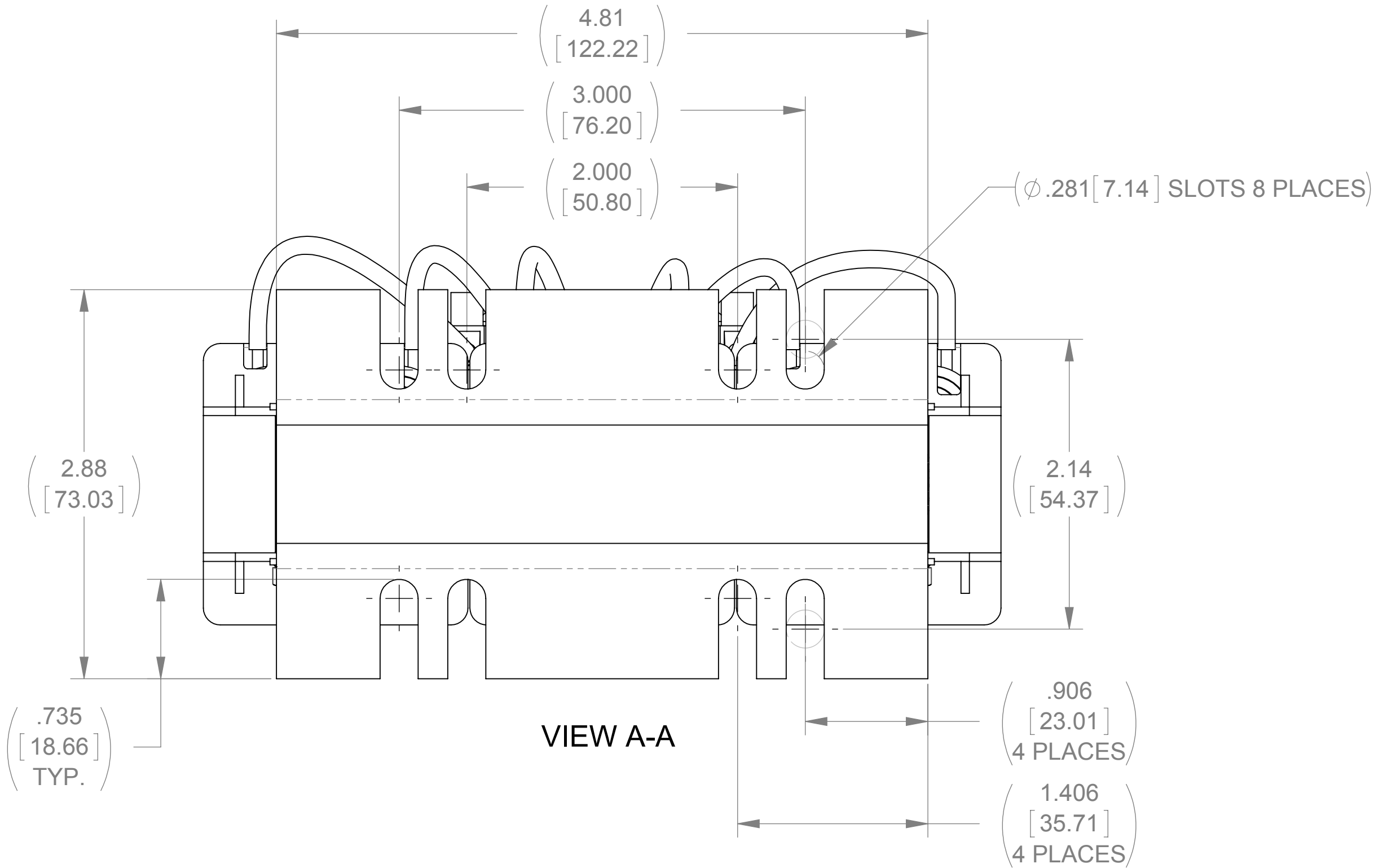
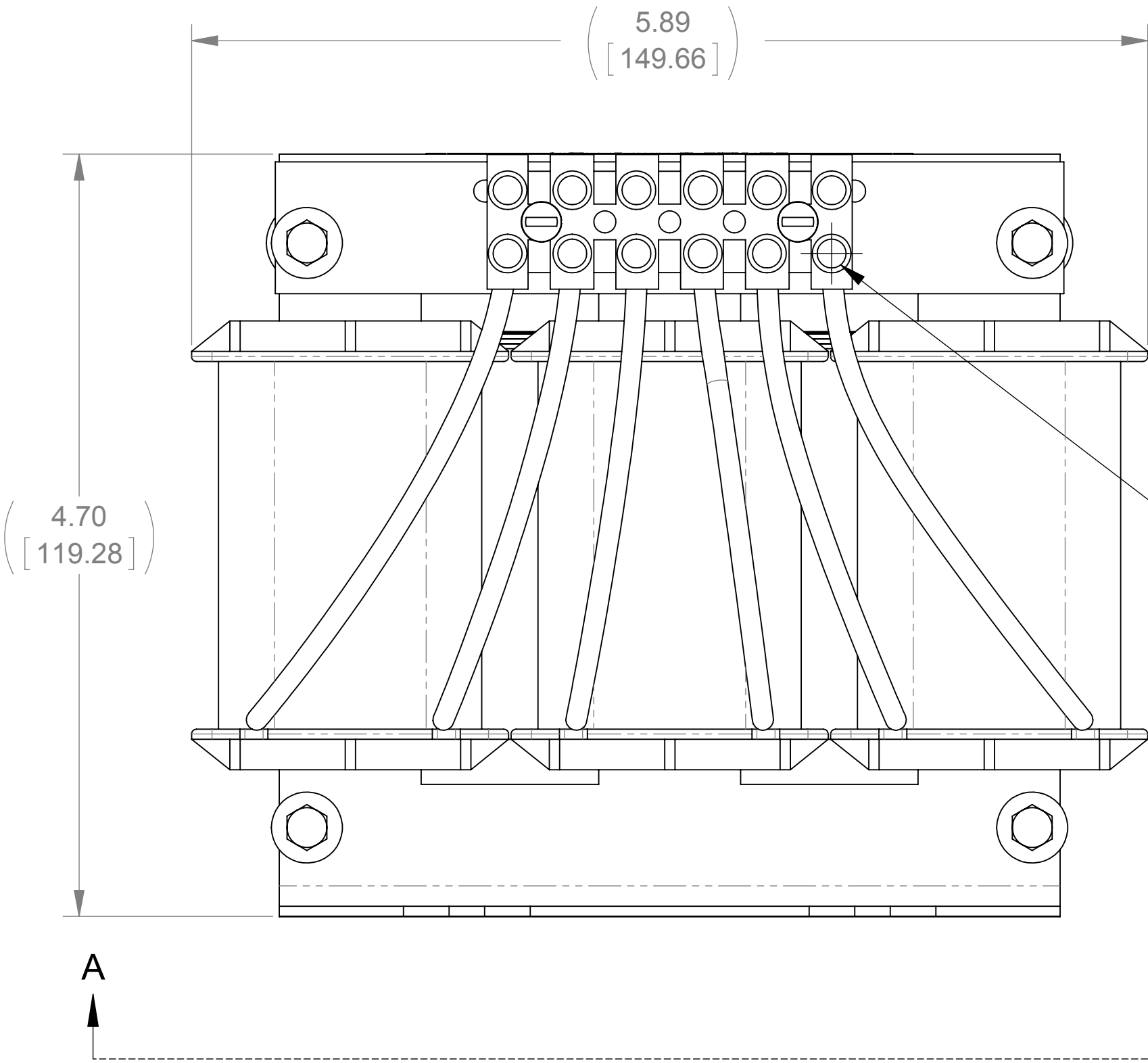
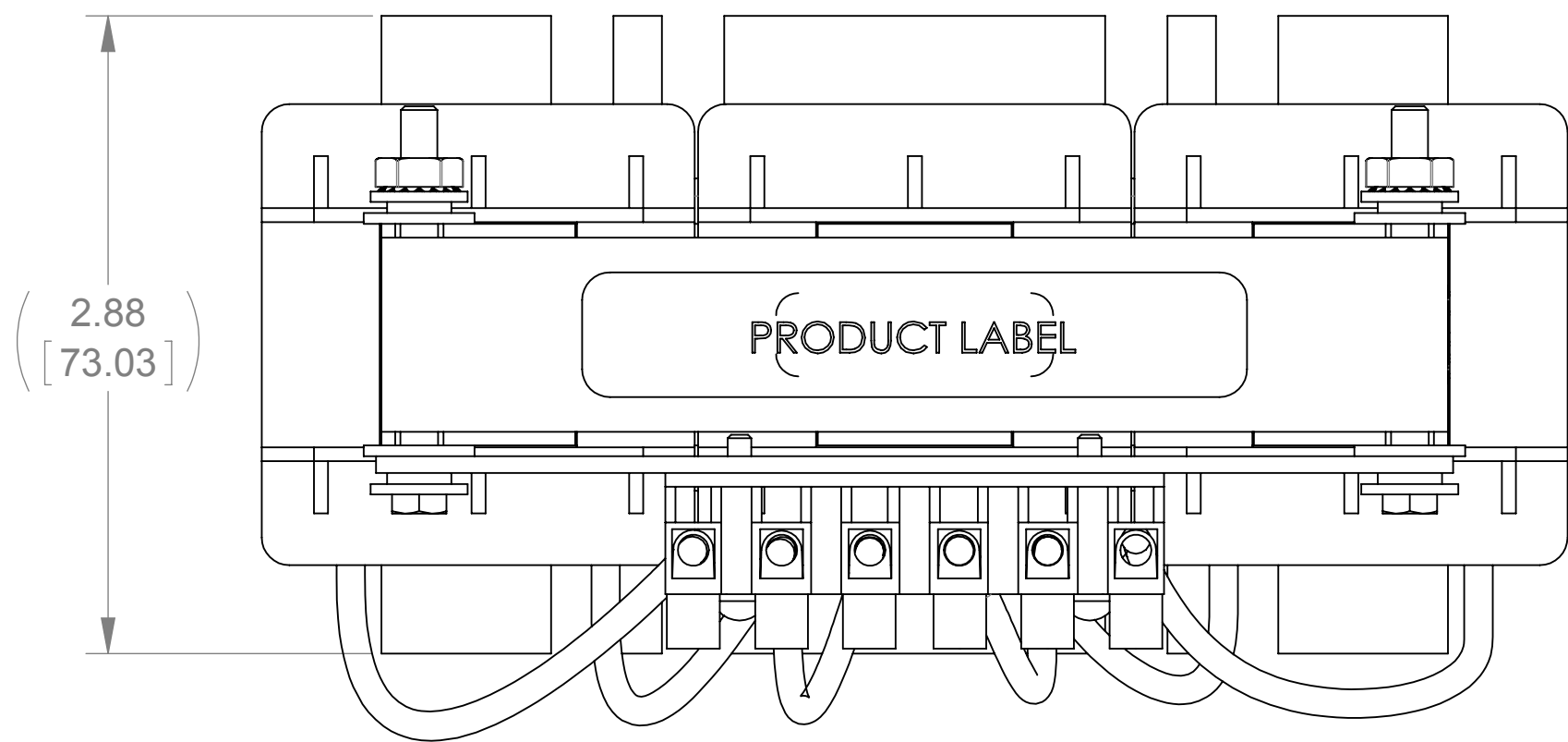


WEIGHT (LBS)	INDUCTANCE	LOSS (WATTS)
7	4.3mH	59.1

ECO No	DESCRIPTION	REV BY	DATE
M8321	DIMENSION CHANGE	JP	12/17/12



SEE NOTE (2)
(WIRE RANGE)

SEE NOTE (1)
(TERMINAL SCREW TIGHTENING)

NOTES:

1. TERMINAL SCREW TIGHTENING TORQUE 4.5 in-lbs MAX.
2. WIRE RANGE: 22 - 10 AWG

THE COMPONENT, PART OR ASSEMBLY DESCRIBED IN THIS DOCUMENT MUST COMPLY WITH THE EU(EUROPEAN UNION) DIRECTIVE RoHS		MATERIAL		CONFIDENTIAL AND PROPRIETARY INFORMATION THIS DOCUMENT CONTAINS CONFIDENTIAL AND PROPRIETARY INFORMATION OF MTE CORPORATION AND MAY NOT BE USED, COPIED OR DISCLOSED TO OTHERS EXCEPT WITH THE AUTHORIZED WRITTEN PERMISSION OF MTE CORPORATION			
CONTAINS <0.1% OF ANY SVHC BY WEIGHT PER REACH REGULATION				DESCRIPTION			
UNLESS OTHERWISE SPECIFIED DIMENSIONS ARE IN INCHES [MM] TOLERANCES ARE: ANGLES: ± 1 ° 1 PLACE .X: ± .1 [2.5] 2 PLACE .XX: ± .03 [0.76] 3 PLACE .XXX: ± .010 [0.254]		<div>MTE</div> <div>AN BL POWER ELECTRONICS COMPANY</div> <div>N83 W13330 Leon Road Menomonee Falls, WI 53051 USA 800.455.4683 262.253.8200</div>		LINE REACTOR			
		DRAWN	DATE	SIZE D		DWG No. CD RLW-001106	REV 05
		JP	08/06/12				
		CHECKED	DATE				
		TM	12/21/12				
		APPROVED	DATE				
		TM	12/21/12	SCALE 5:4		SHEET 1 OF 1	