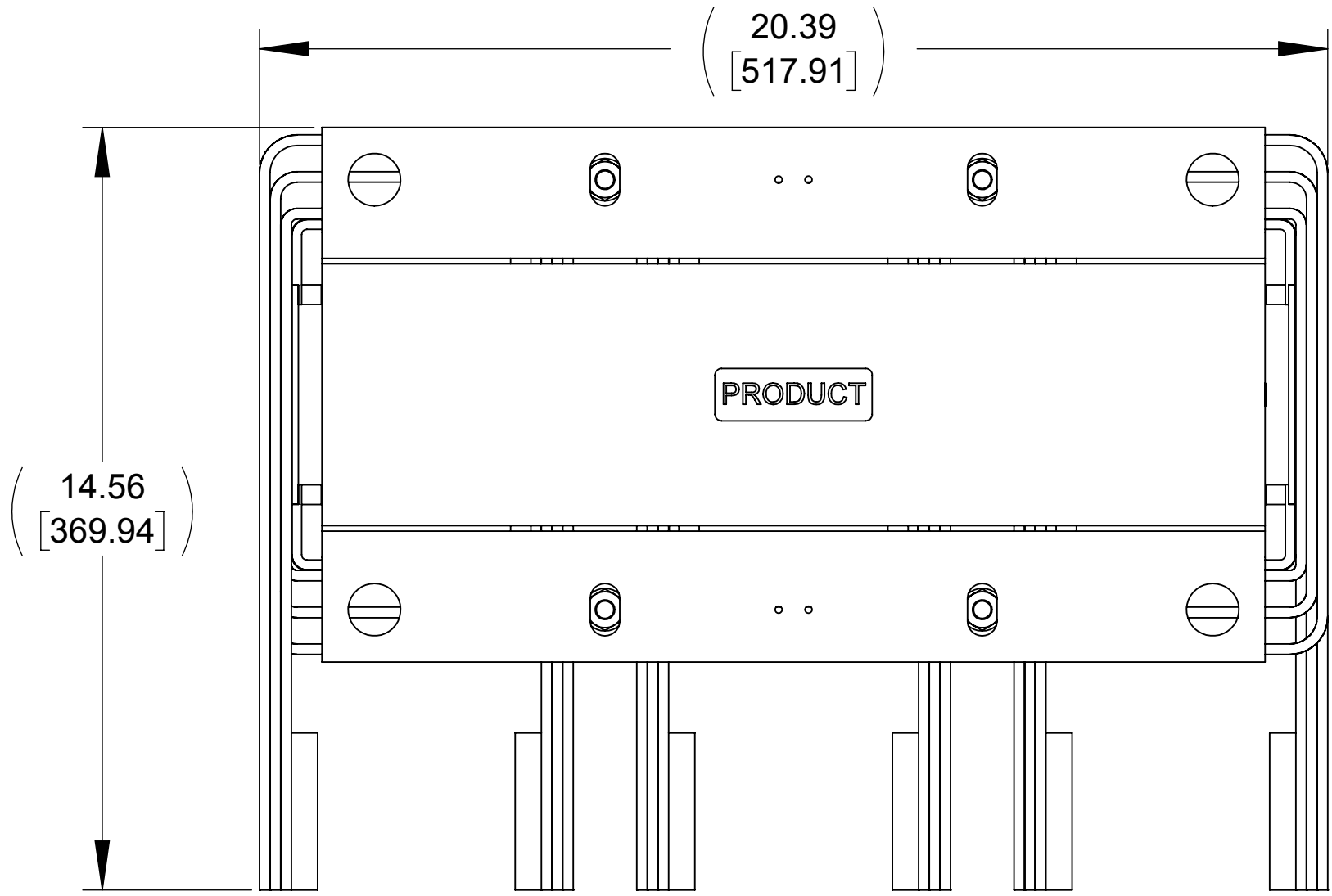
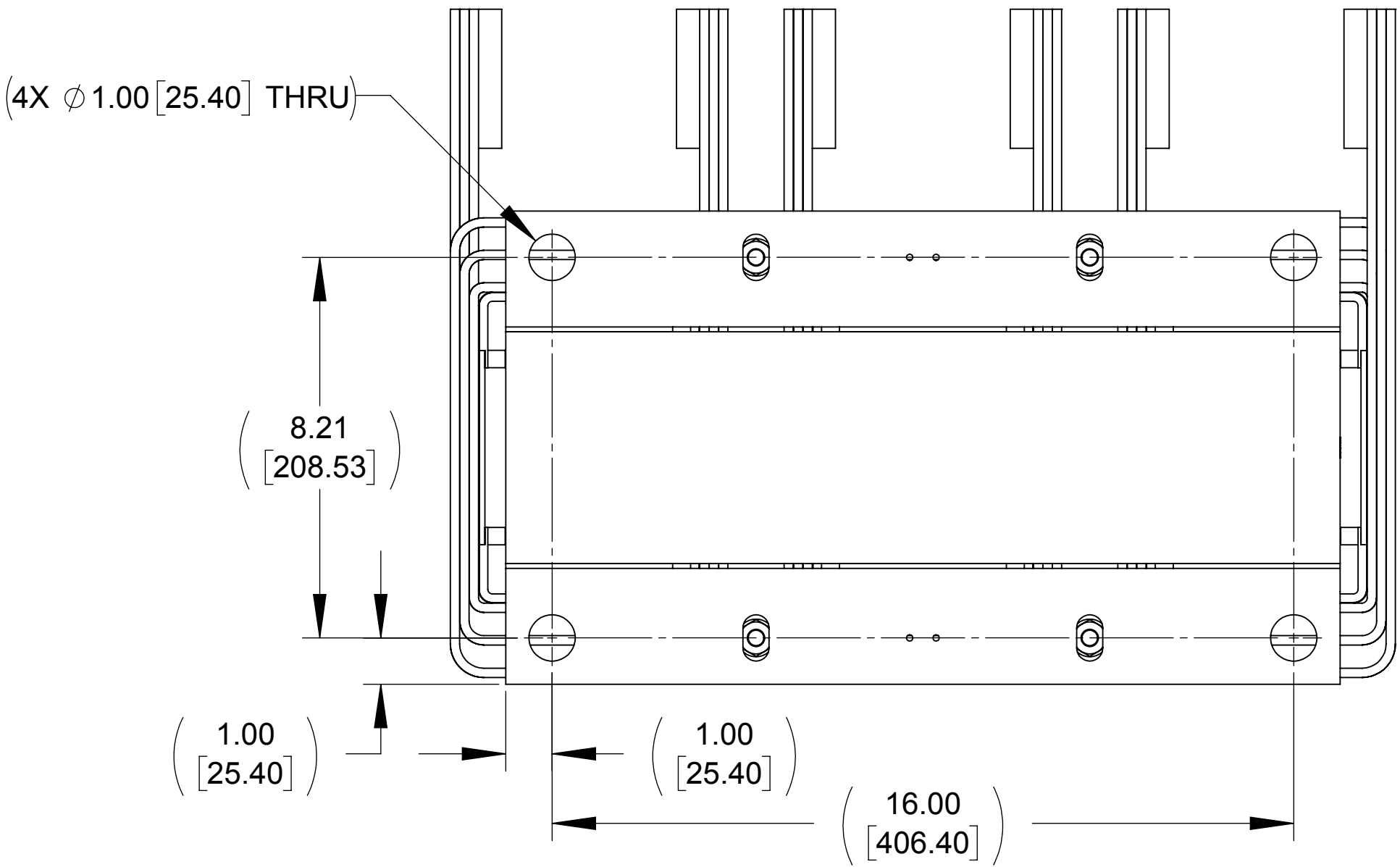


APPROX. WEIGHT (LBS)
480

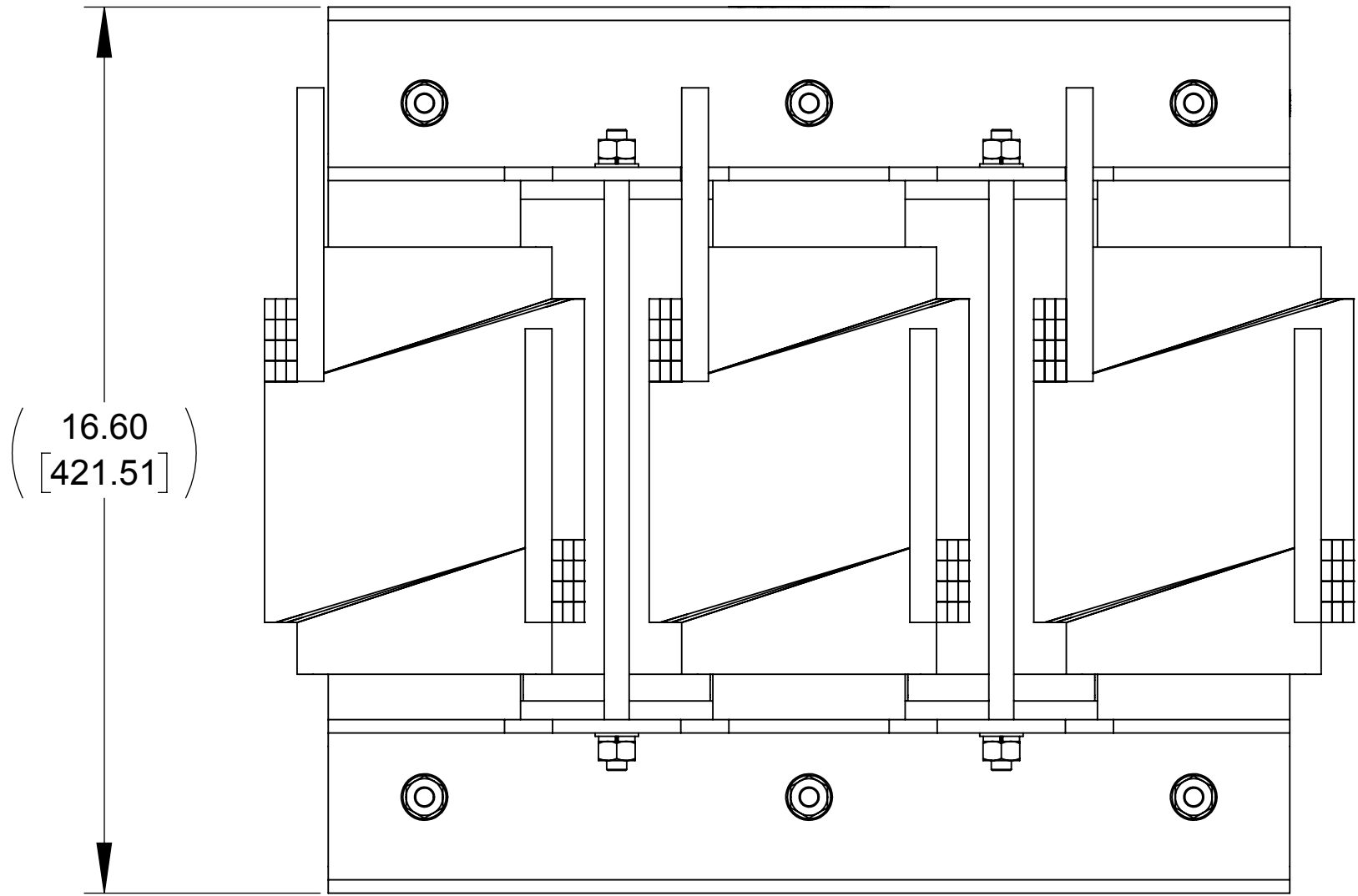
ECO No	DESCRIPTION	REV BY	DATE
M12058	CONVERTED TO SOLIDWORKS	JD	10/18/19



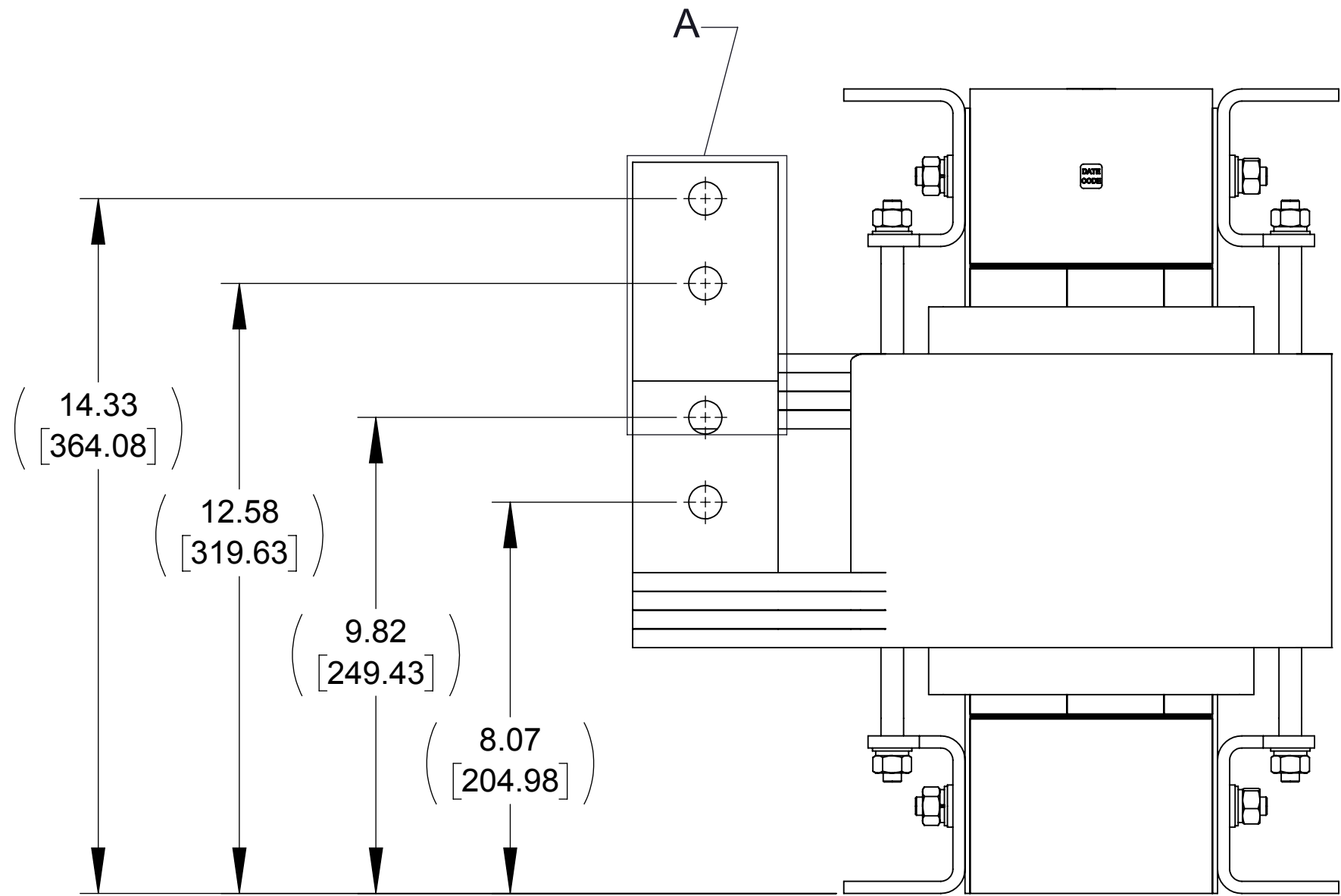
TOP VIEW



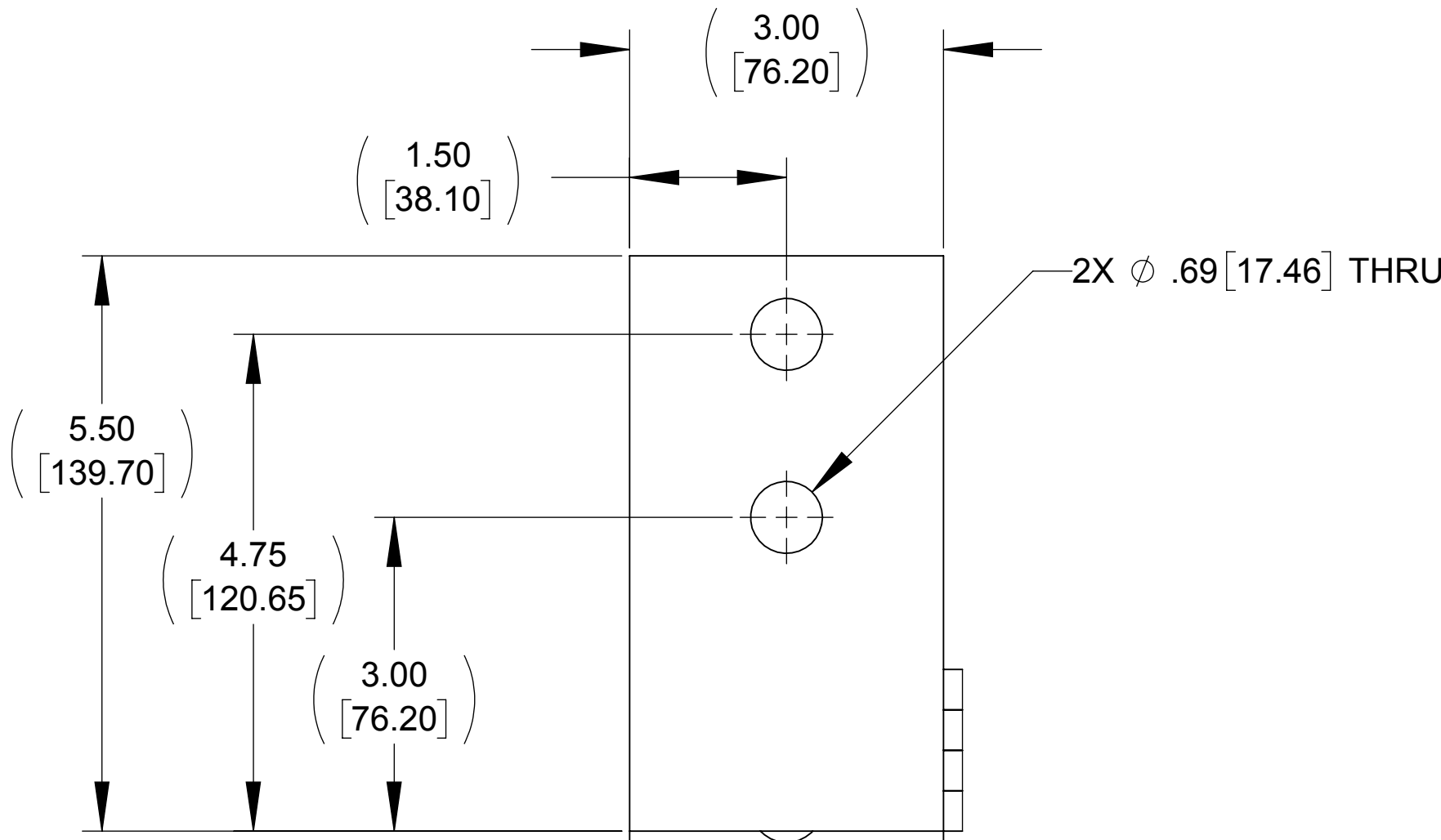
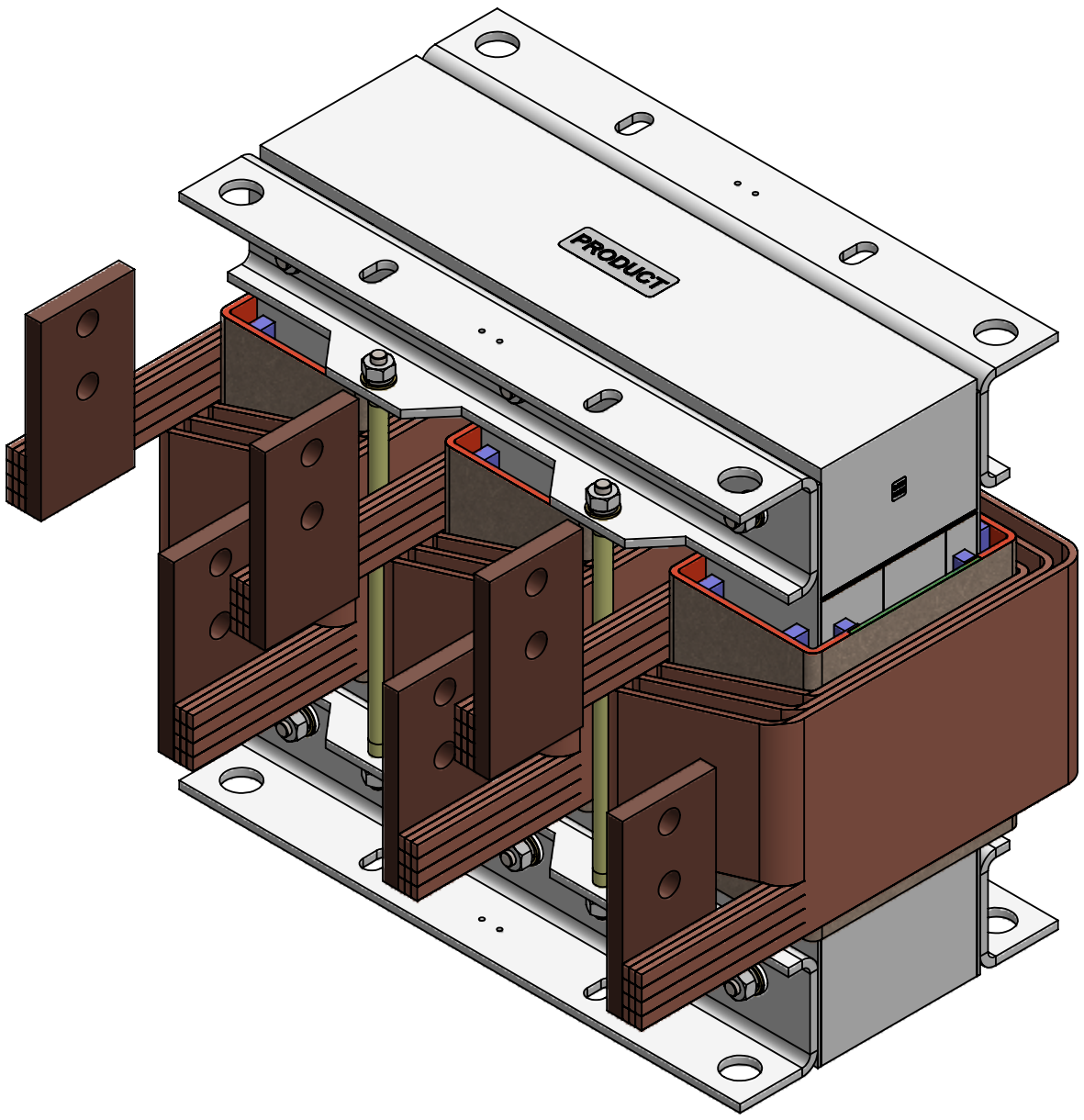
BOTTOM VIEW



FRONT VIEW



SIDE VIEW



DETAIL A  
CUSTOMER CONNECTION  
DETAIL VIEW  
(6 PLACES)

NOTES:

1. REFER TO USER MANUAL FOR COMPLETE INSTALLATION INSTRUCTIONS.

THE COMPONENT, PART OR ASSEMBLY DESCRIBED IN THIS DOCUMENT MUST COMPLY WITH THE EU(EUROPEAN UNION) DIRECTIVE RoHS2		MATERIAL		CONFIDENTIAL AND PROPRIETARY INFORMATION THIS DOCUMENT CONTAINS CONFIDENTIAL AND PROPRIETARY INFORMATION OF MTE CORPORATION AND MAY NOT BE USED, COPIED OR DISCLOSED TO OTHERS EXCEPT WITH THE AUTHORIZED WRITTEN PERMISSION OF MTE CORPORATION		
CONTAINS <0.1% OF ANY SVHC BY WEIGHT PER REACH REGULATION				DESCRIPTION		
UNLESS OTHERWISE SPECIFIED DIMENSIONS ARE IN INCHES [MM] TOLERANCES ARE:  ANGLES: ± 1 °  1 PLACE .X: ± .1 [2.5]  2 PLACE .XX: ± .03 [0.76]  3 PLACE .XXX: ± .010 [0.254]		<b>MTE</b> POWER QUALITY. SOLVED.  N83 W13330 Leon Road Menomonee Falls, WI 53051 USA 800.455.4683 262.253.8200		LINE/LOAD REACTOR 1500A, 480V, 60HZ, 0.015mH		
		DRAWN	DATE	SIZE	DWG No.	REV
		CHECKED	DATE	D	CD RL-150002	01
		APPROVED	DATE	SCALE	1:3	SHEET 1 OF 1
		PY	10/21/19			