

Basic Setup Steps

1. Power the module and connect via ethernet to a computer.
2. Set IP address on computer to the same network as module.
(Ex: 192.168.1.50) *Note: restore computer settings after setup.*
3. To configure module, open web browser and enter:
`http://192.168.1.2/setup.html`
4. In General Settings under WiFi, enter the WiFi settings.
5. Assign the module a permanent IP address or enable DHCP.
6. Restart the module for the settings to take effect.

Factory Default Settings

IP Address: 192.168.1.2

Subnet Mask: 255.255.255.0

Control Page Web Address: `http://192.168.1.2`

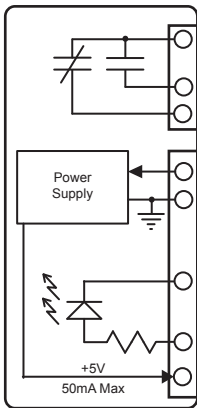
Control Password: *(no password set)*

Setup Page Web Address: `http://192.168.1.2/setup.html`

Setup Username: admin

Setup Password: webrelay *(all lower case)*

WebRelay (X-WR-44W) | Pinout Diagram



Relay

- C:** Relay Contact Common
- NO:** Relay Contact Normally Open
- NC:** Relay Contact Normally Closed

Power

- V IN+:** Power Supply Input (9-28VDC)
- V IN-:** Power Supply Input (Ground)

Digital Input

- INPUT-:** Optically-Isolated Input (-)
- INPUT+:** Optically-Isolated Input (+)
- +5V OUT:** 5VDC Output



www.ControlByWeb.com

1681 West 2960 South, Nibley, UT 84321, USA