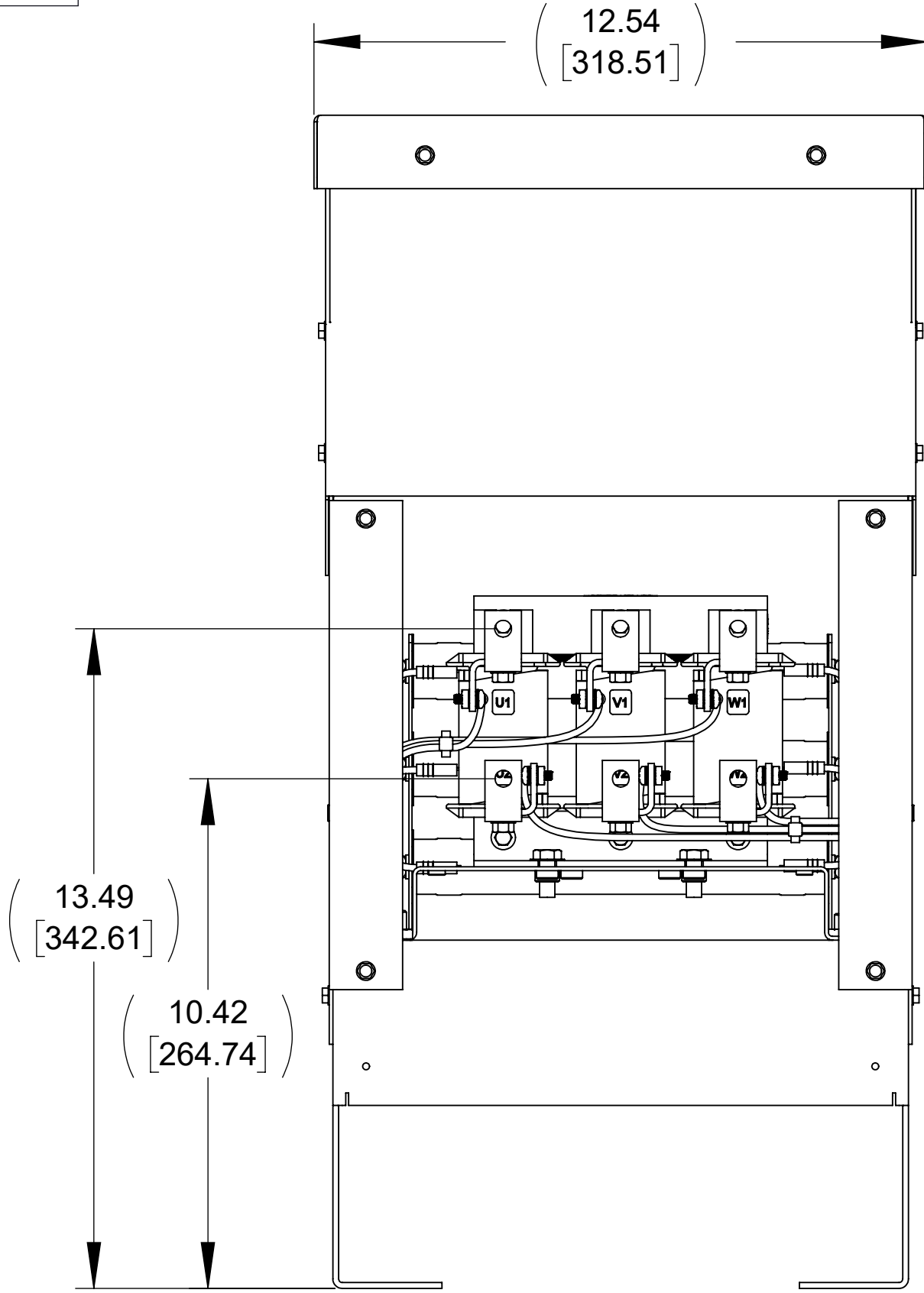
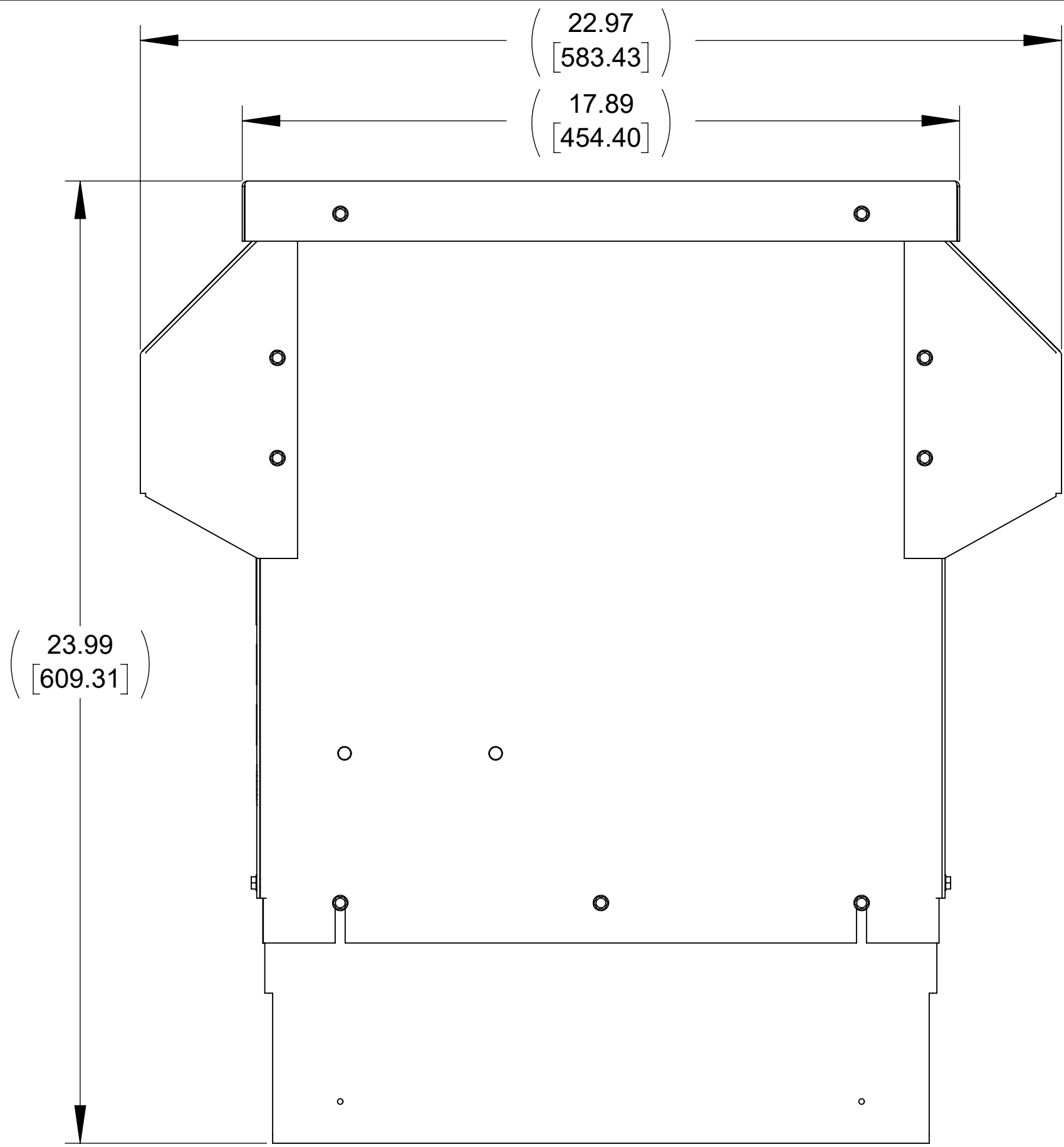


APPROX. WEIGHT
(LBS)
72

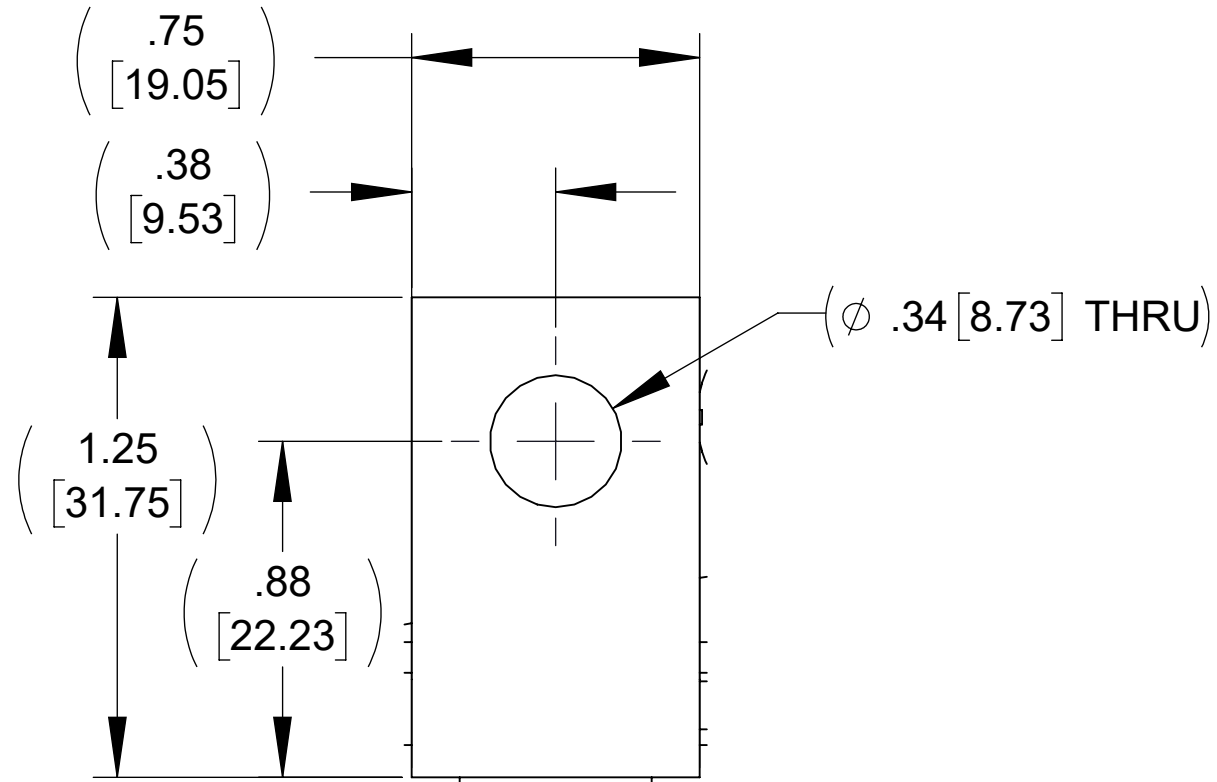
| ECO No | DESCRIPTION | REV BY | DATE |
|--------|------------------------|--------|----------|
| M14079 | RELEASED TO PRODUCTION | JD | 11/10/21 |



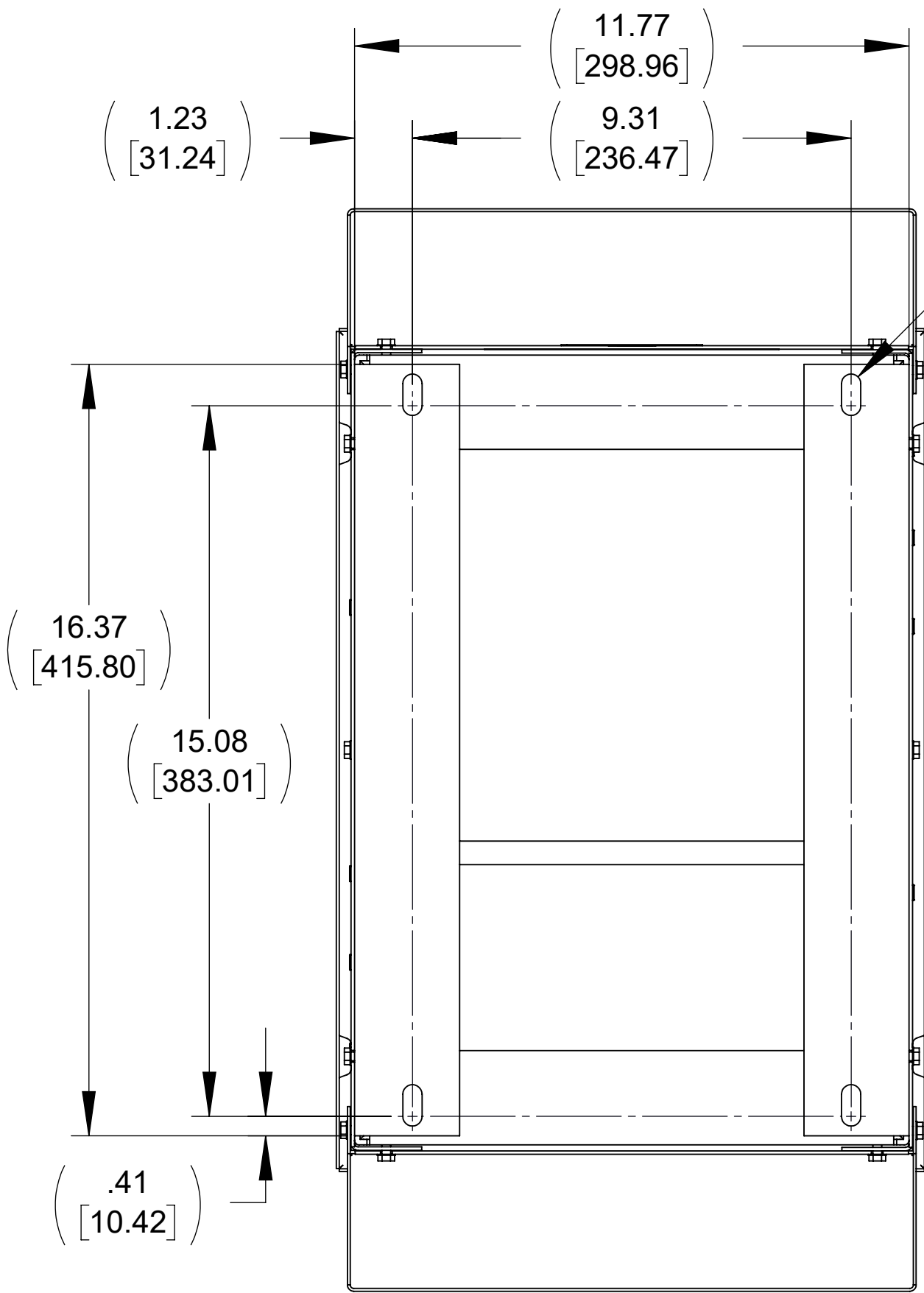
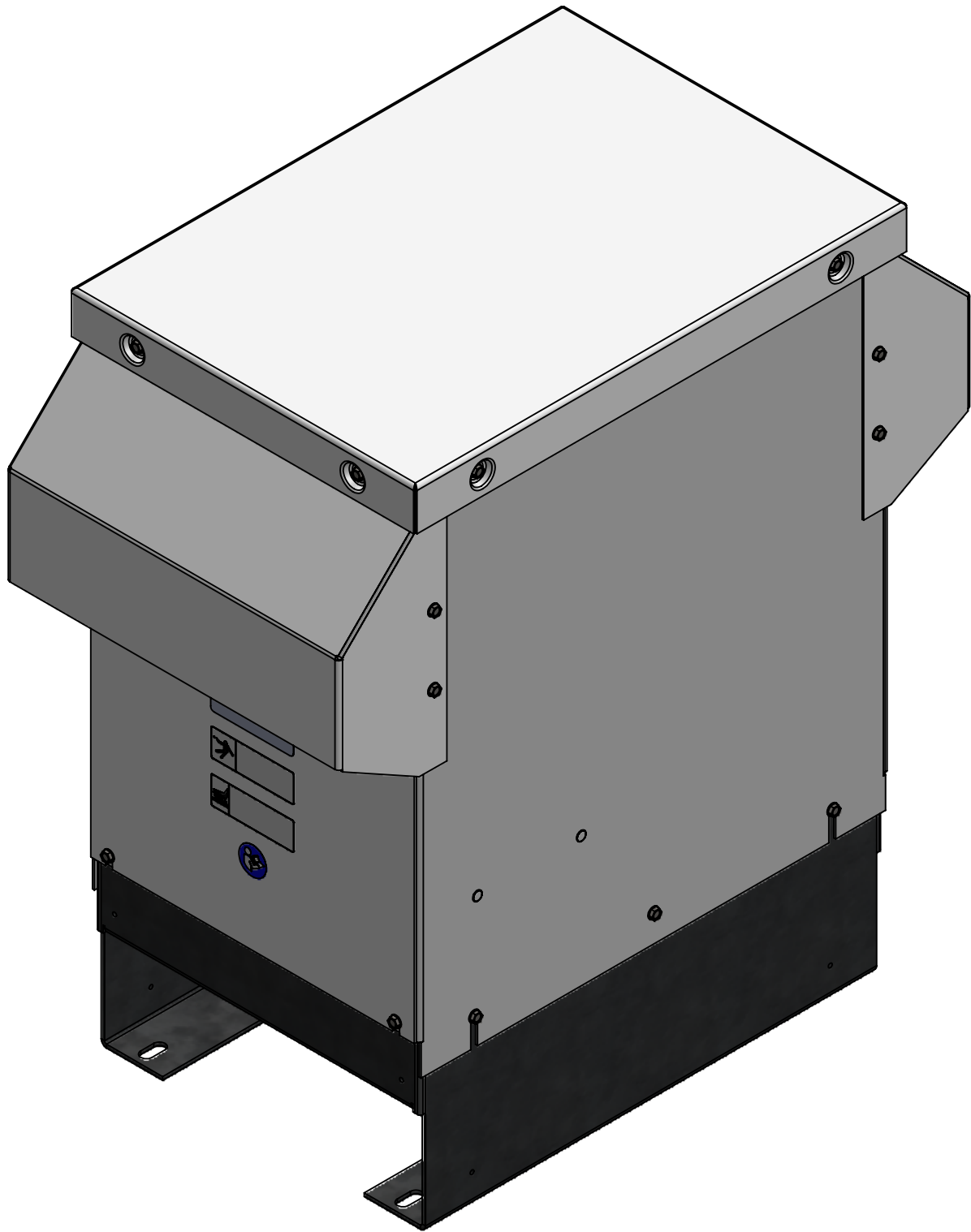
FRONT VIEW
(PANELS REMOVED)



SIDE VIEW



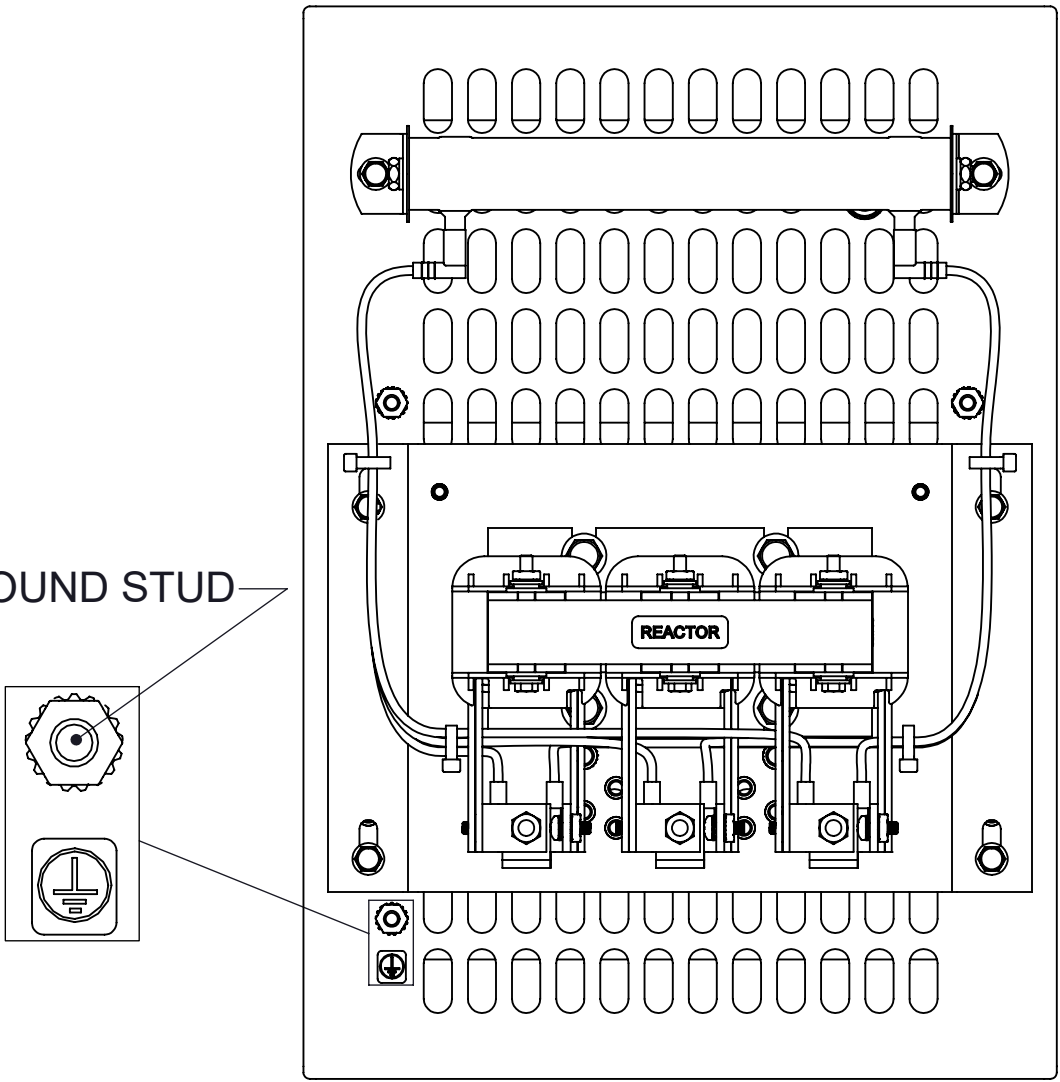
DETAIL A
(6 PLACES)



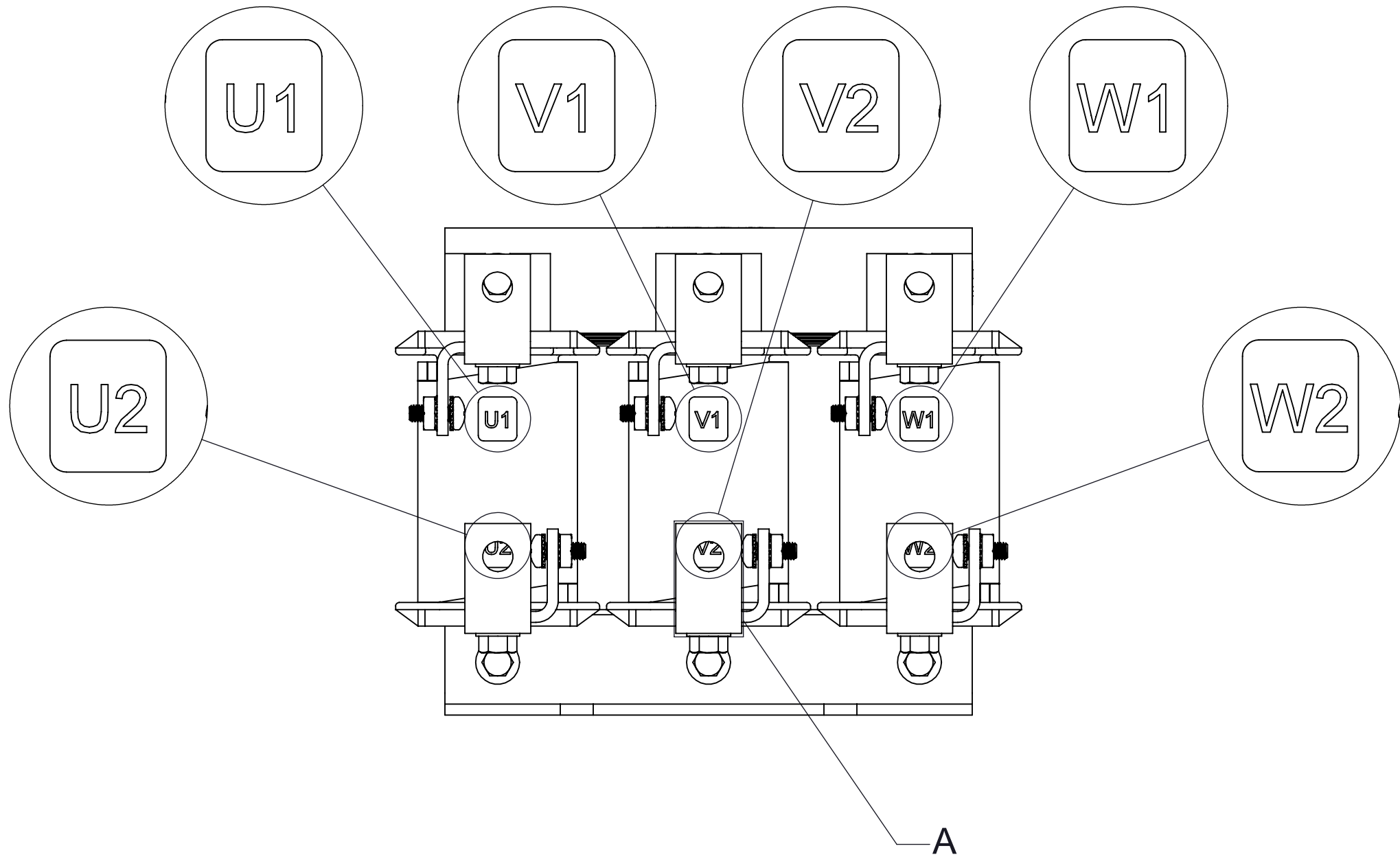
BOTTOM VIEW

.41 [10.41] X .88 [22.35]
SLOT 4 PLACES

1/4-20 GROUND STUD



TOP VIEW
(PANELS REMOVED)



CUSTOMER CONNECTION
DETAIL VIEW

NOTES:

1. REFER TO USER MANUAL FOR COMPLETE INSTALLATION INSTRUCTIONS

| | | | | | |
|--------------------------------------------------------------------------------------------------------------------------------------------------------------------------------------------------------|--|-----------------------|------------------|----------------------------------------------------------------------------------------------------------------------------------------------------------------------------------------------------------------------------------------------------|-------------------------|
| THE COMPONENT, PART OR ASSEMBLY DESCRIBED IN THIS DOCUMENT MUST COMPLY WITH THE EU (EUROPEAN UNION) DIRECTIVE RoHS2 | | DRAWN BY: JD | DATE 08/16/21 | CONFIDENTIAL AND PROPRIETARY INFORMATION THIS DOCUMENT CONTAINS CONFIDENTIAL AND PROPRIETARY INFORMATION OF MTE CORPORATION AND MAY NOT BE USED, COPIED OR DISCLOSED TO OTHERS EXCEPT WITH THE AUTHORIZED WRITTEN PERMISSION OF MTE CORPORATION | |
| CONTAINS <0.1% OF ANY SVHC BY WEIGHT PER REACH REGULATION | | CHECKED BY: JD | DATE 11/10/21 | DESCRIPTION DVRT E SERIES 130A 208-600V 2-4kHz FILTER, NEMA 3R | |
| UNLESS OTHERWISE SPECIFIED DIMENSIONS ARE IN INCHES [MM] TOLERANCES ARE: ANGLES: ± 1 ° 1 PLACE .X: ± .1 [2.5] 2 PLACE .XX: ± .03 [0.76] 3 PLACE .XXX: ± .010 [0.254] | | ME APPROVED BY: DP | DATE 11/10/21 | | |
| | | RE APPROVED BY: PY | DATE 11/11/21 | SIZE D | DWG No. CD DVTW0130E |
| | | | | SCALE 1:3 | REV 01 |



N83 W13330 Leon Road
Menomonee Falls, WI 53051 USA
800.455.4683
262.253.8200