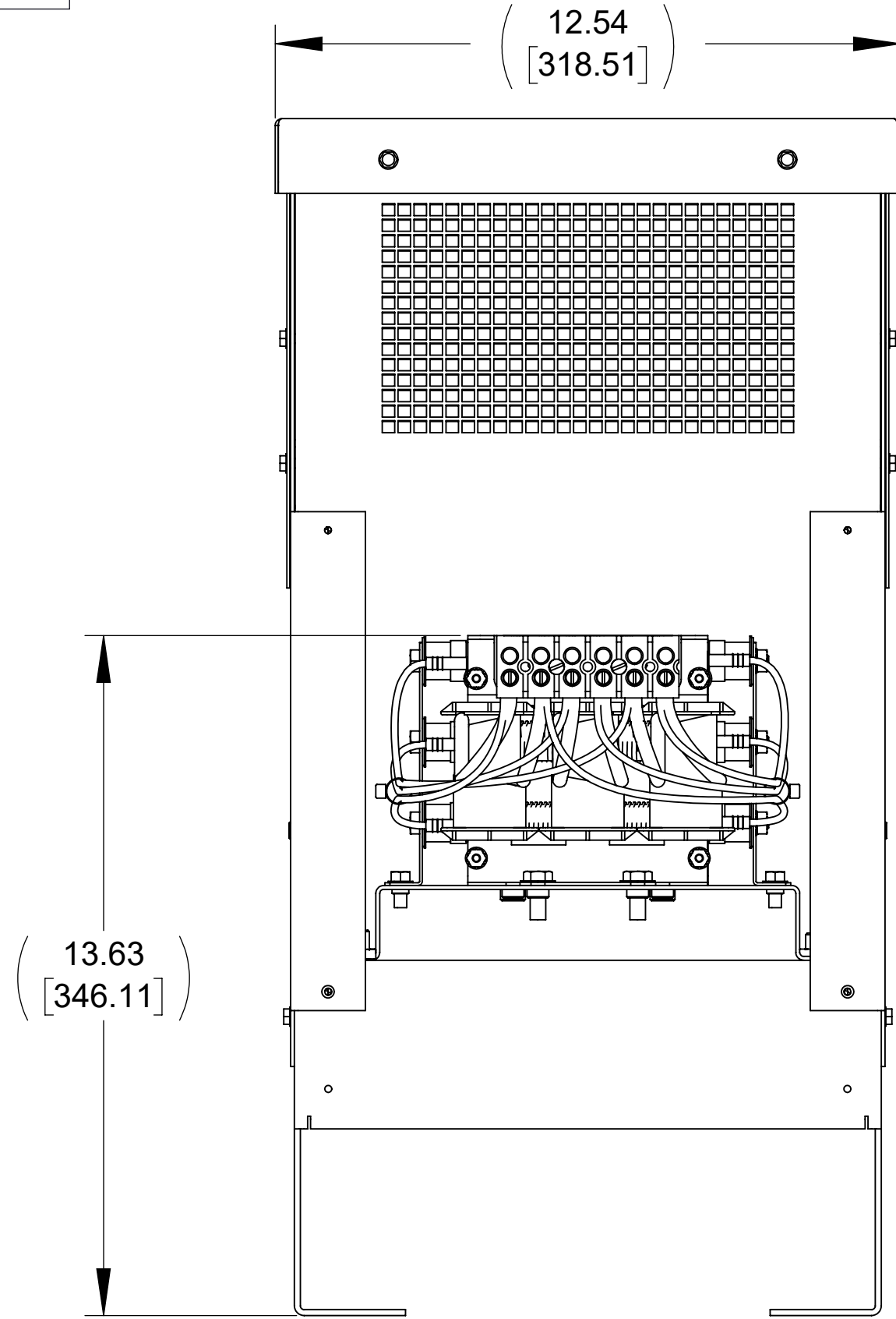
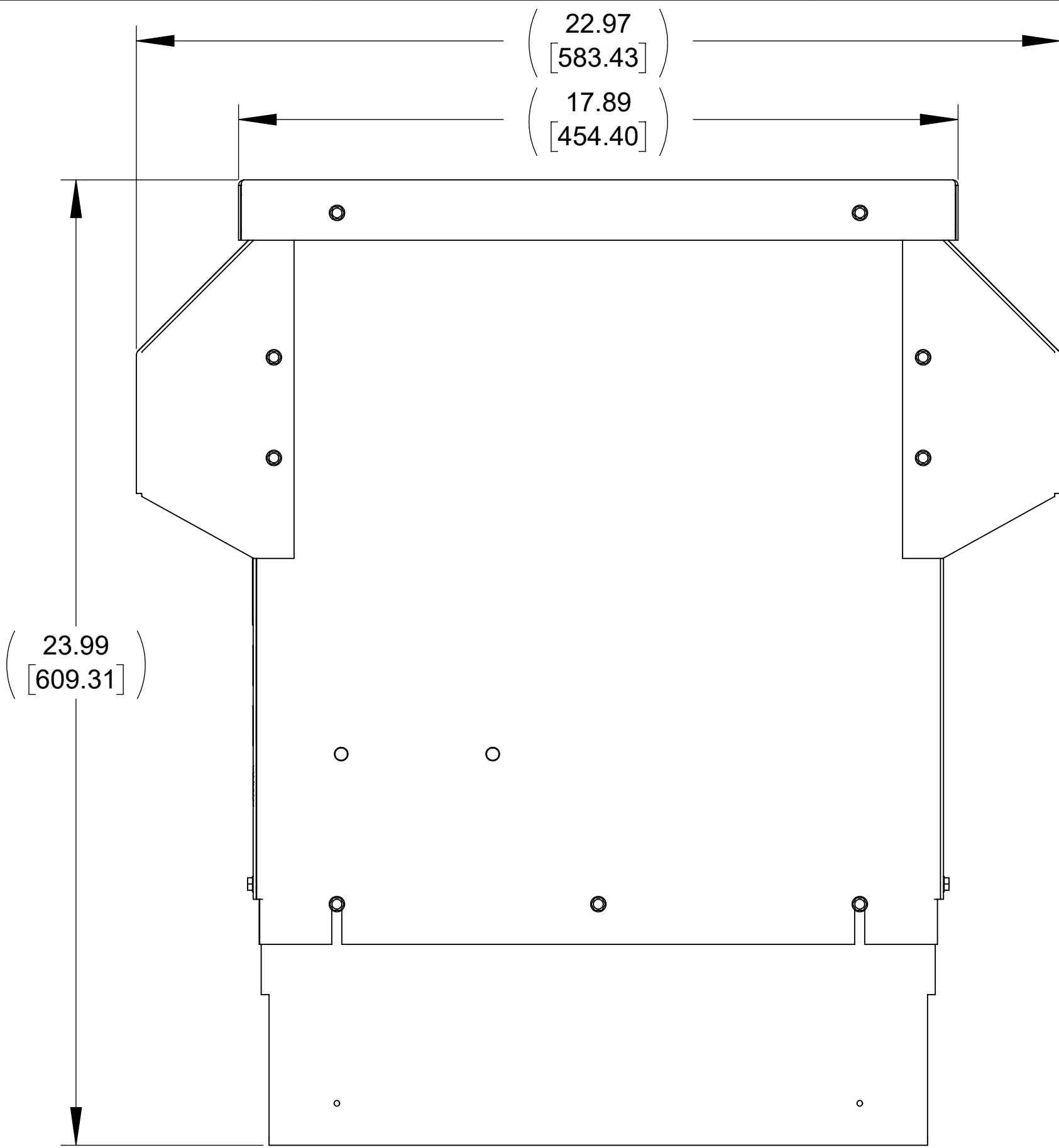


APPROX. WEIGHT
(LBS)
69

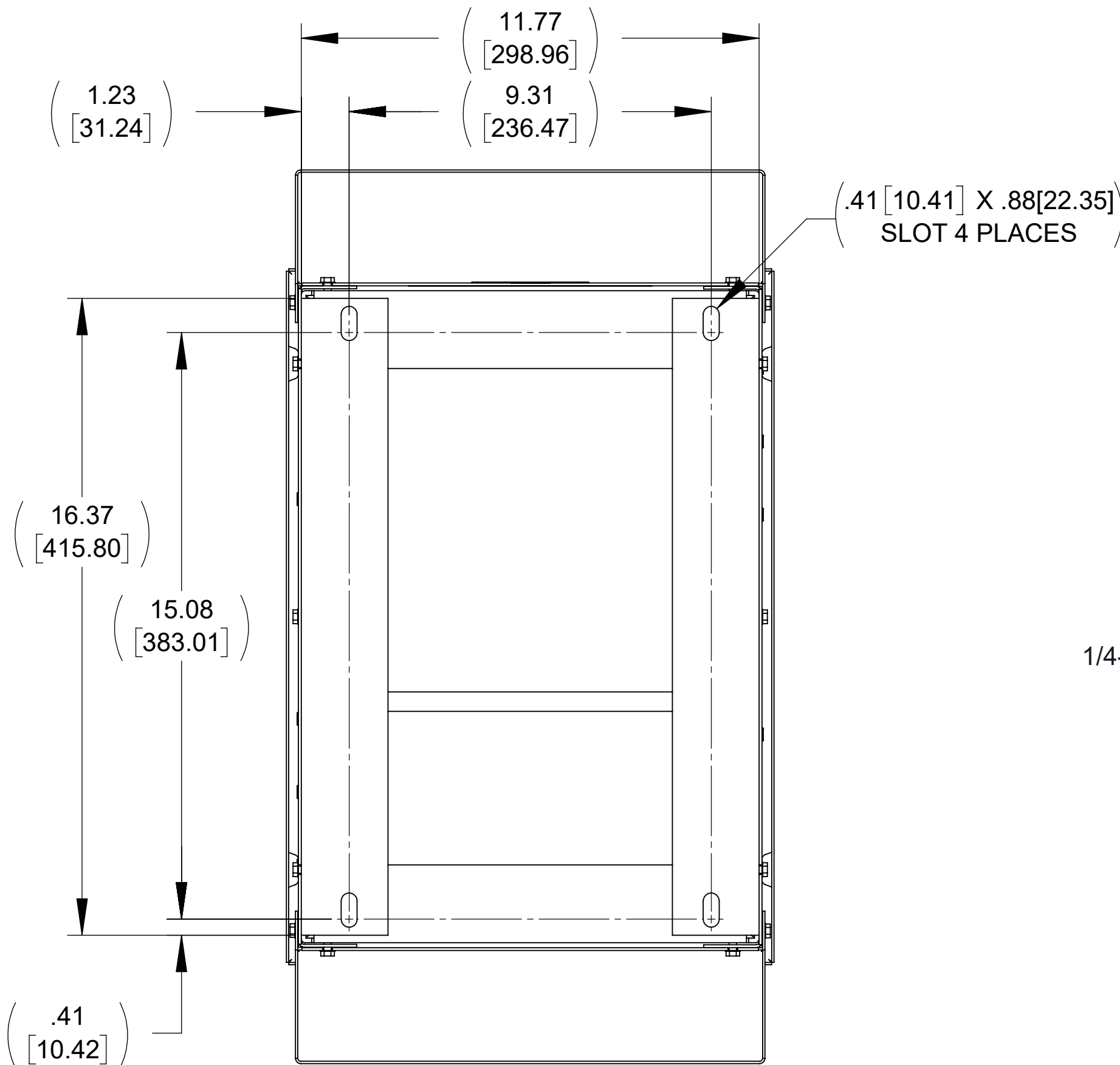
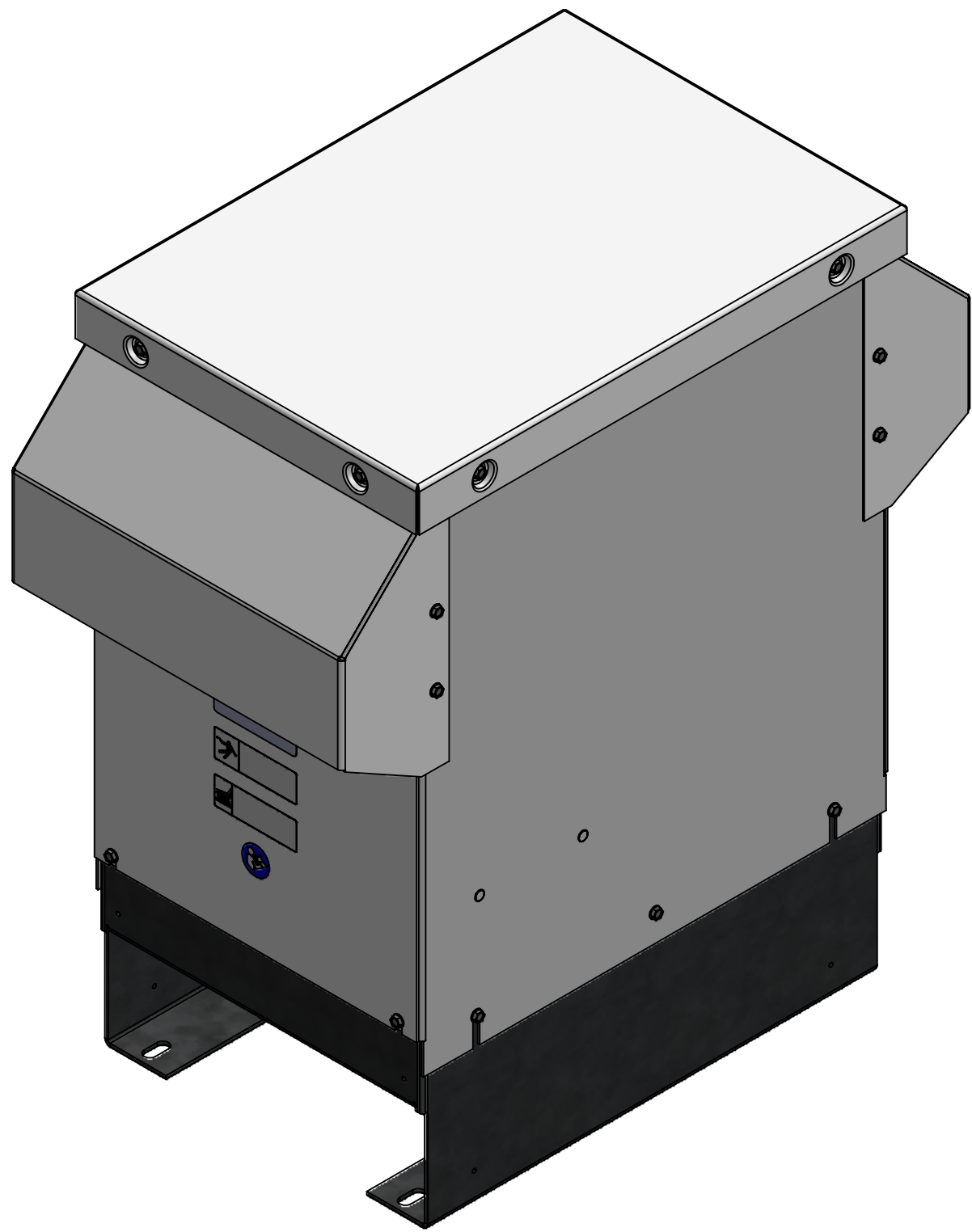
ECO No	DESCRIPTION	REV BY	DATE
M14066	RELEASED TO PRODUCTION	JD	11/09/21



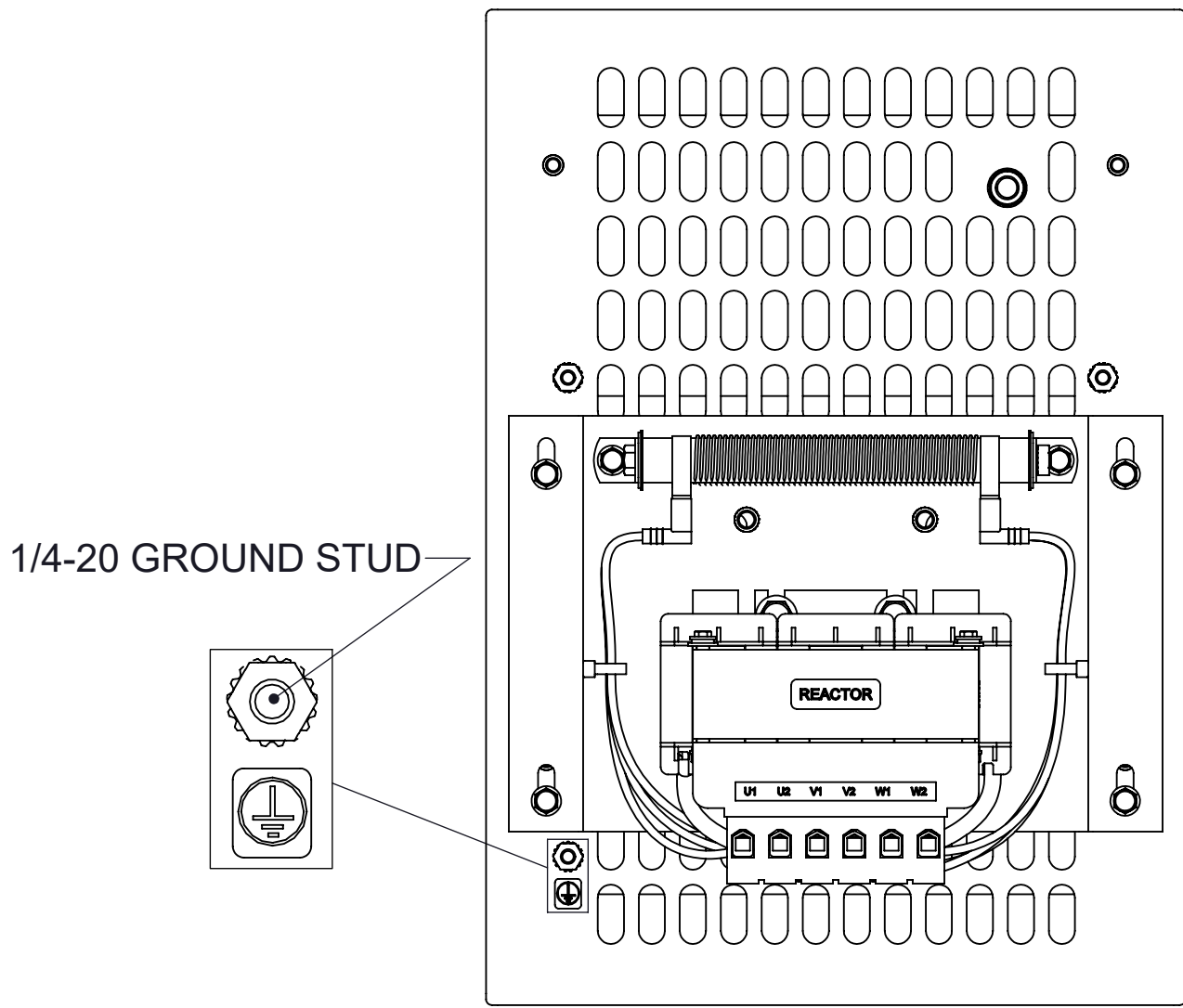
FRONT VIEW
(PANELS REMOVED)



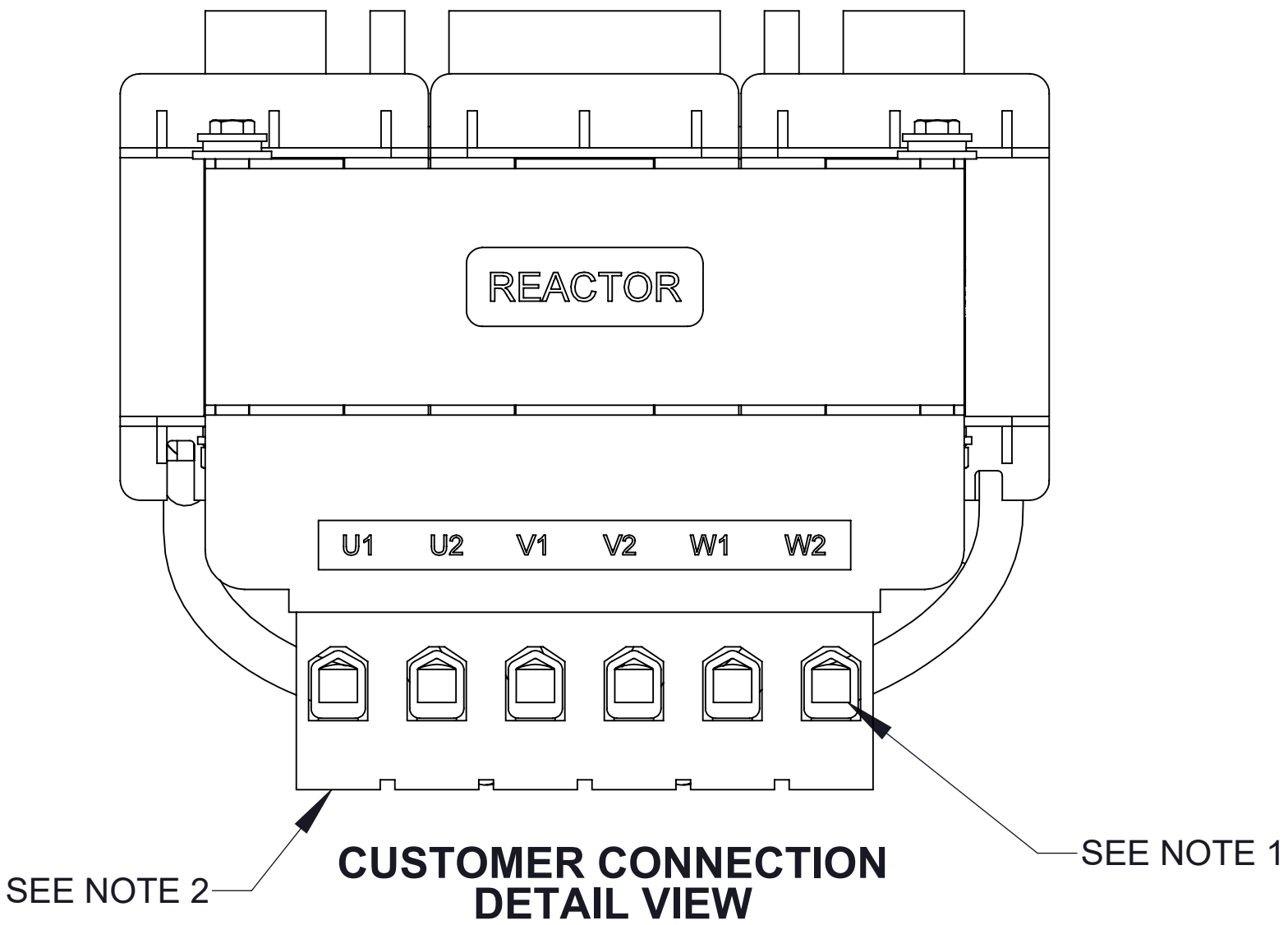
SIDE VIEW



BOTTOM VIEW



TOP VIEW
(PANELS REMOVED)



CUSTOMER CONNECTION
DETAIL VIEW

NOTES:

1. TERMINAL WIRE RANGE: 4-18 AWG.
2. TERMINAL SCREW TIGHTENING TORQUE: 16 IN/LBS.
3. REFER TO USER MANUAL FOR COMPLETE INSTALLATION INSTRUCTIONS

THE COMPONENT, PART OR ASSEMBLY DESCRIBED IN THIS DOCUMENT MUST COMPLY WITH THE EU(EUROPEAN UNION) DIRECTIVE RoHS2		DRAWN BY: KV	DATE 08/31/21	CONFIDENTIAL AND PROPRIETARY INFORMATION THIS DOCUMENT CONTAINS CONFIDENTIAL AND PROPRIETARY INFORMATION OF MTE CORPORATION AND MAY NOT BE USED, COPIED OR DISCLOSED TO OTHERS EXCEPT WITH THE AUTHORIZED WRITTEN PERMISSION OF MTE CORPORATION	
CONTAINS <0.1% OF ANY SVHC BY WEIGHT PER REACH REGULATION		CHECKED BY: JD	DATE 11/09/21		
UNLESS OTHERWISE SPECIFIED DIMENSIONS ARE IN INCHES [MM] TOLERANCES ARE: ANGLES: ± 1 ° 1 PLACE .X: ± .1 [2.5] 2 PLACE .XX: ± .03 [0.76] 3 PLACE .XXX: ± .010 [0.254]		ME APPROVED BY: DP	DATE 11/09/21	DESCRIPTION DVDT E SERIES 80A 208-600V 2-4kHz FILTER, NEMA 3R	
		RE APPROVED BY: PY	DATE 11/09/21		
				SIZE D	DWG No. CD DVTW0080E
				SCALE 1:3	REV 00
				Sheet1	
				SHEET 1 OF 1	



N83 W13330 Leon Road
Menomonee Falls, WI 53051 USA
800.455-4683
262.253.8200