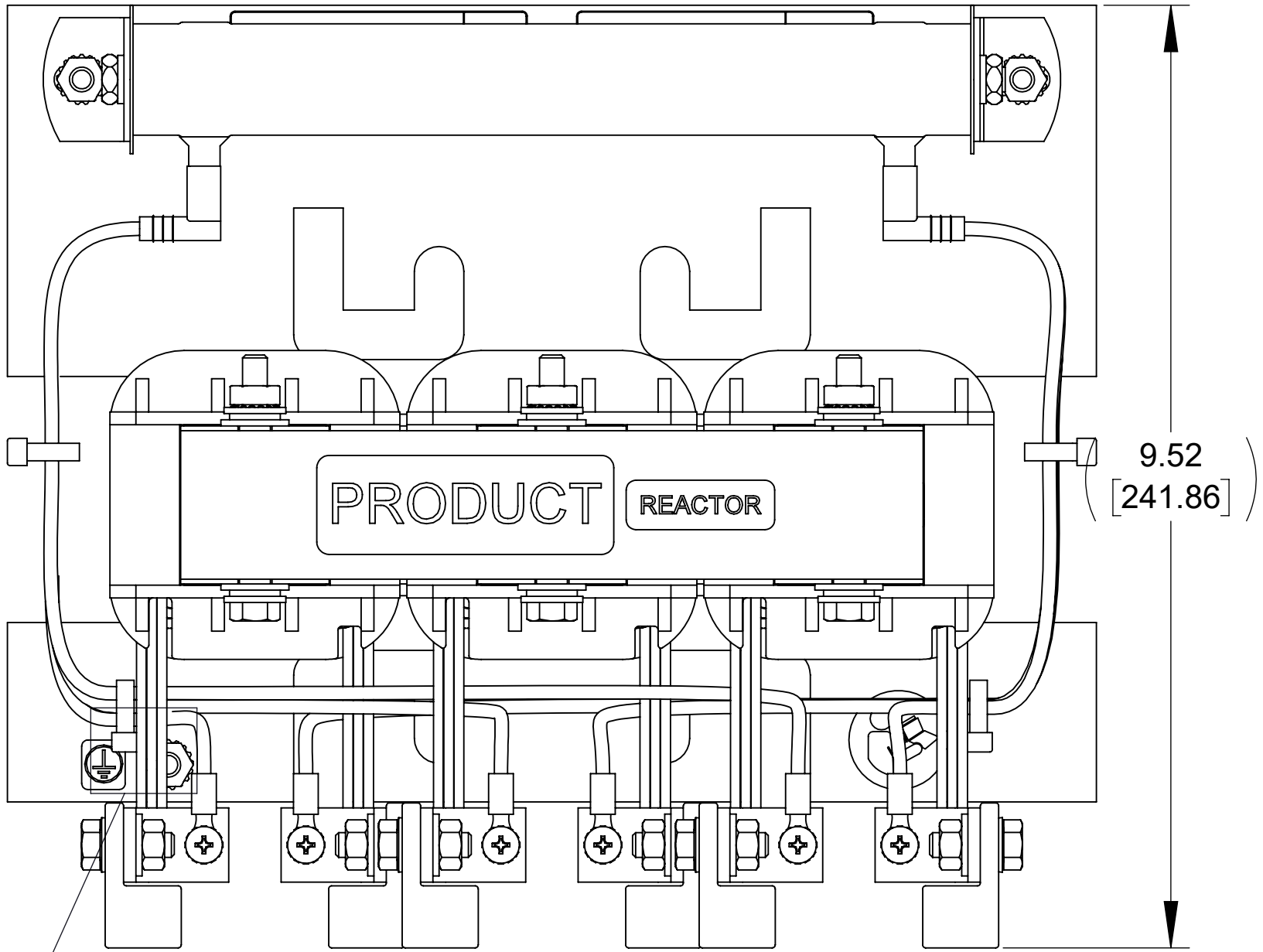
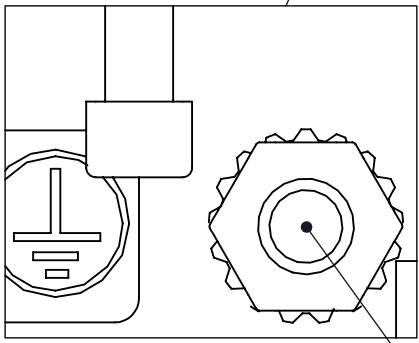


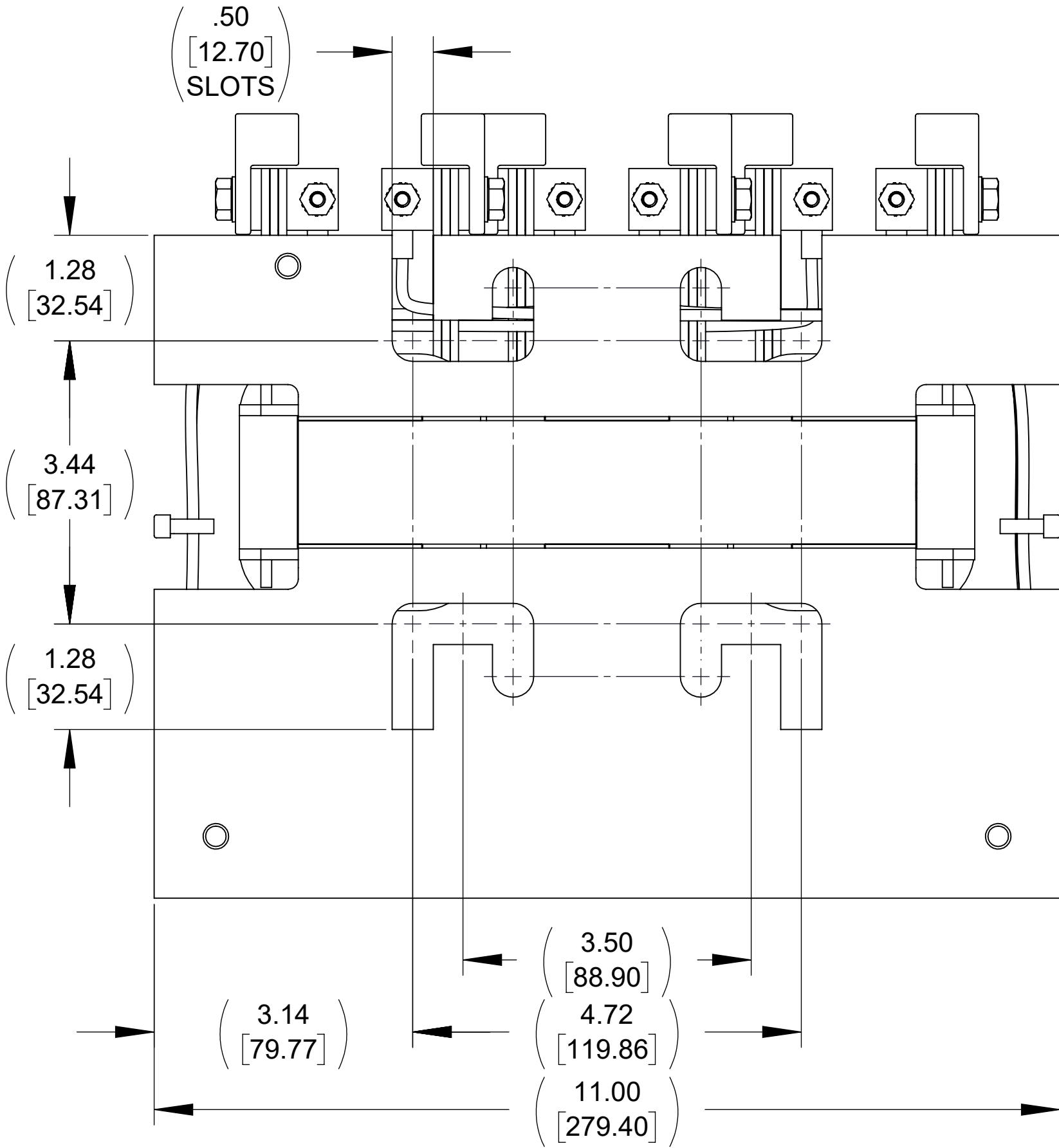
APPROX. WEIGHT
(LBS)
32



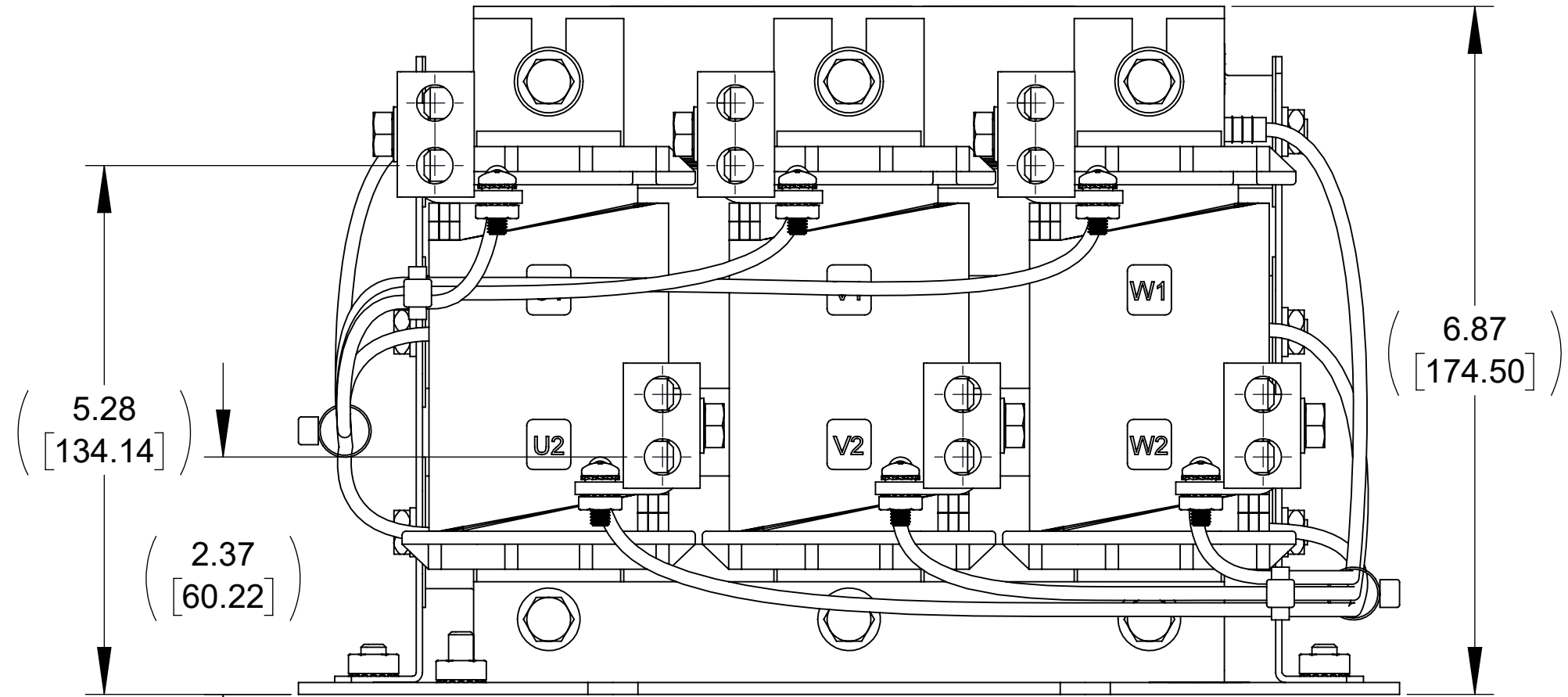
TOP VIEW



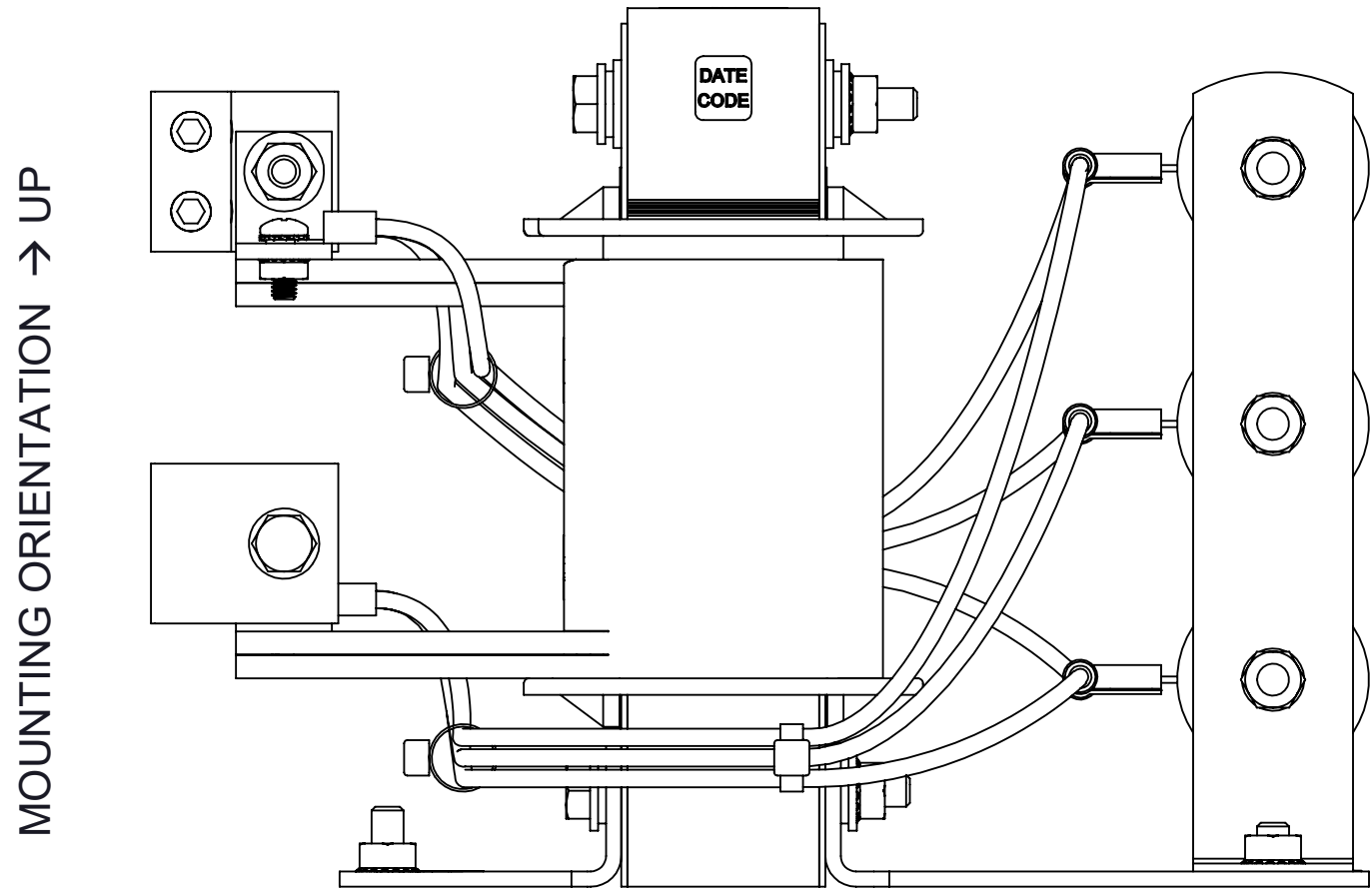
1/4-20 GROUND STUD



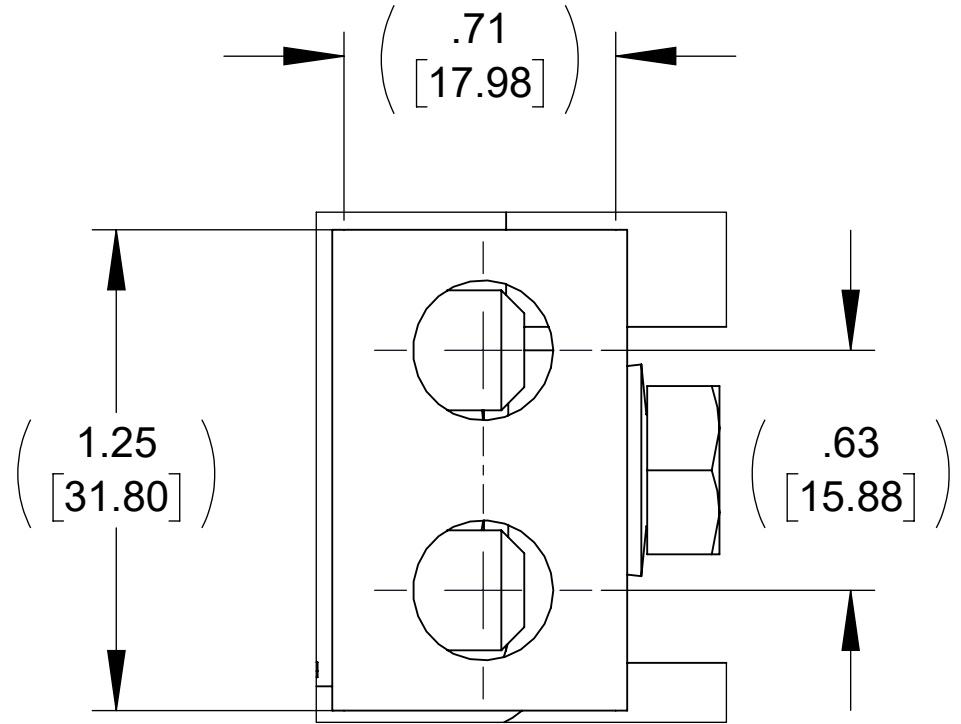
BOTTOM VIEW



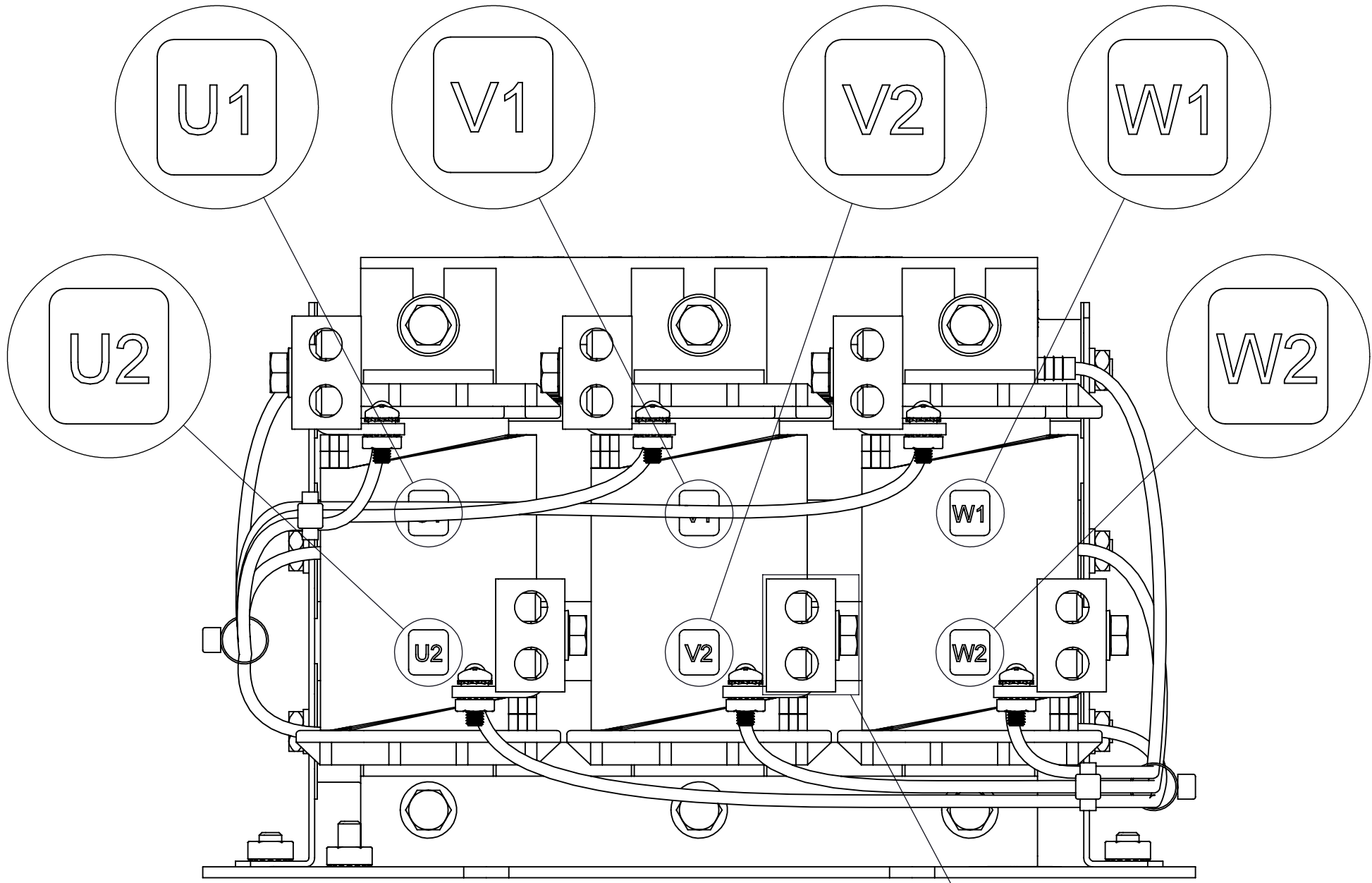
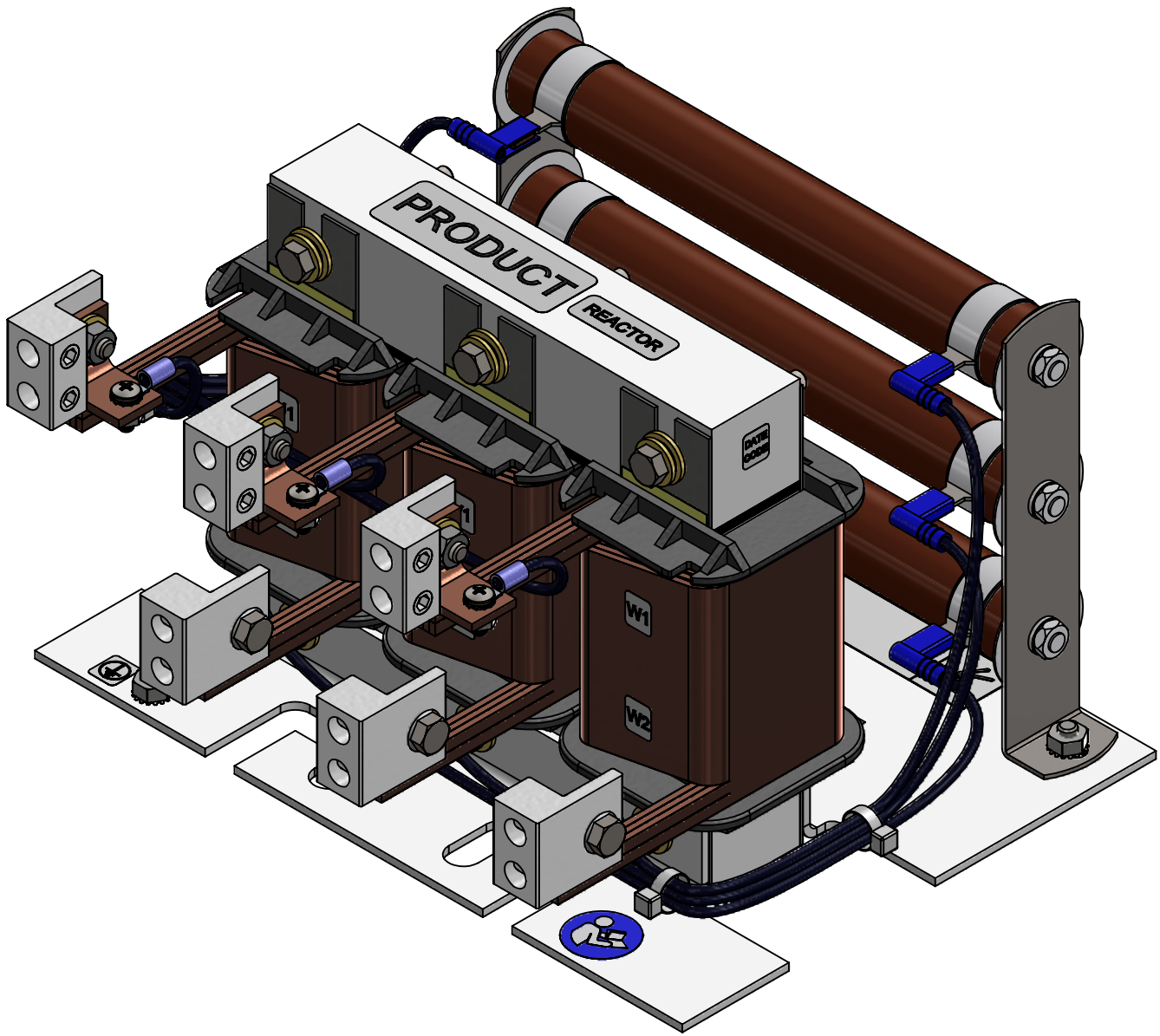
FRONT VIEW



SIDE VIEW



DETAIL A
CUSTOMER CONNECTION
LUG DETAIL
SEE NOTES 1&2
(6 PLACES)



CUSTOMER CONNECTION
DETAIL VIEW

NOTES:

1. TERMINAL WIRE RANGE: 2/0-1 AWG.
2. TERMINAL SCREW TIGHTENING TORQUE: 50 IN.LBS.
3. REFER TO USER MANUAL FOR COMPLETE INSTALLATION INSTRUCTIONS.

THE COMPONENT, PART OR ASSEMBLY DESCRIBED IN THIS DOCUMENT MUST COMPLY WITH THE EU(EUROPEAN UNION) DIRECTIVE RoHS2		DRAWN BY: JD	DATE 07/14/21	CONFIDENTIAL AND PROPRIETARY INFORMATION THIS DOCUMENT CONTAINS CONFIDENTIAL AND PROPRIETARY INFORMATION OF MTE CORPORATION AND MAY NOT BE USED, COPIED OR DISCLOSED TO OTHERS EXCEPT WITH THE AUTHORIZED WRITTEN PERMISSION OF MTE CORPORATION	
CONTAINS <0.1% OF ANY SVHC BY WEIGHT PER REACH REGULATION		CHECKED BY: JD	DATE 11/17/21		
UNLESS OTHERWISE SPECIFIED DIMENSIONS ARE IN INCHES [MM] TOLERANCES ARE: ANGLES: ± 1 ° 1 PLACE .X: ± .1 [2.5] 2 PLACE .XX: ± .03 [0.76] 3 PLACE .XXX: ± .010 [0.254]		ME APPROVED BY: DP	DATE 11/17/21	DESCRIPTION DVRT E SERIES 200A 208-600V 2-4kHz FILTER, OPEN PANEL	
		RE APPROVED BY: PY	DATE 11/17/21		
 N83 W13330 Leon Road Menomonee Falls, WI 53051 USA 800.455-4683 262.253.8200		SIZE D	DWG No. CD DVTP0200E	REV 01	
		SCALE 2:3	Sheet1	SHEET 1 OF 1	