

APPROX. WEIGHT  
(LBS.)  
86

ECO No	DESCRIPTION	REV BY	DATE
M10014	ADDED MOUNTING HARDWARE TO REACTOR	MN	12/01/16

D

C

B

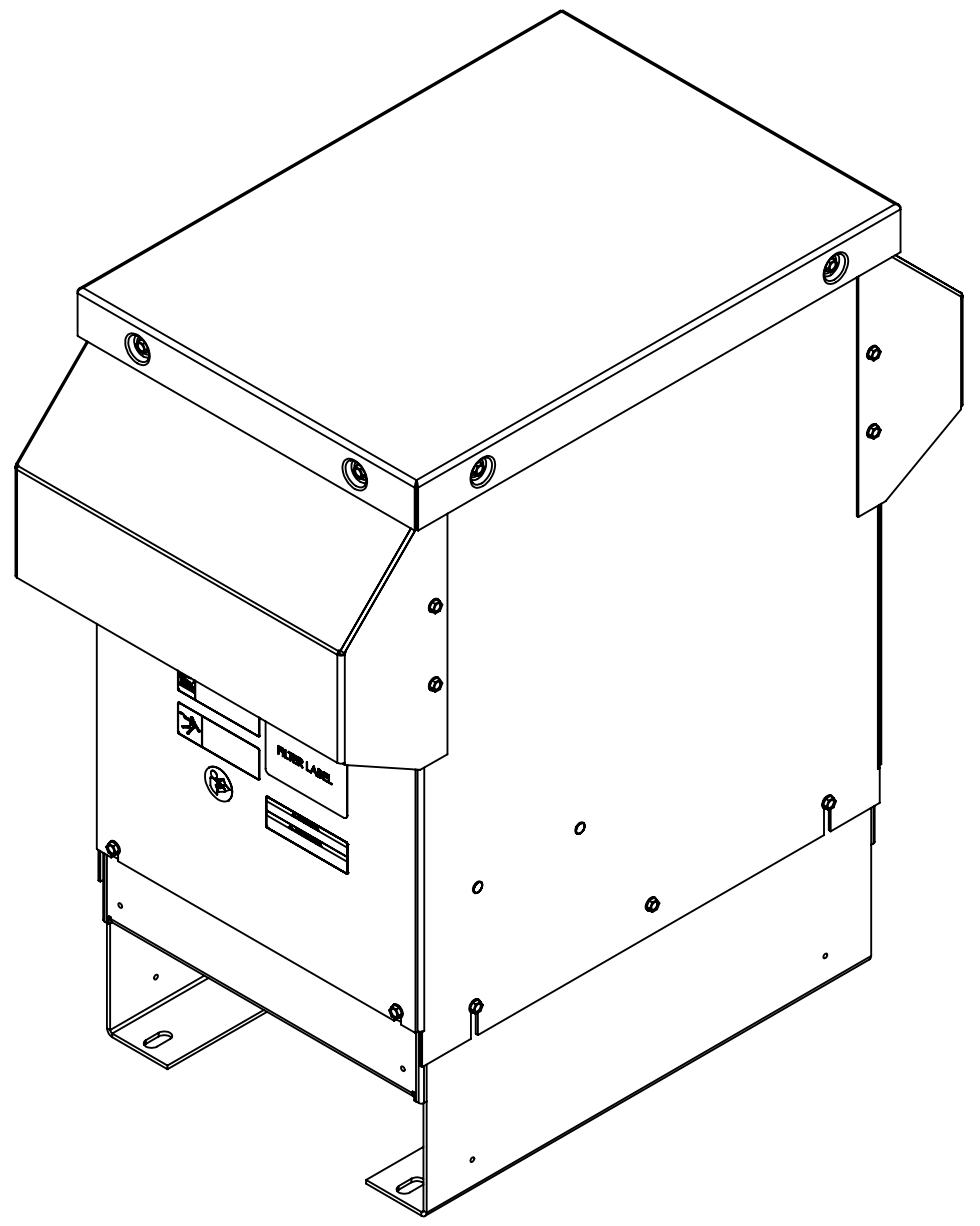
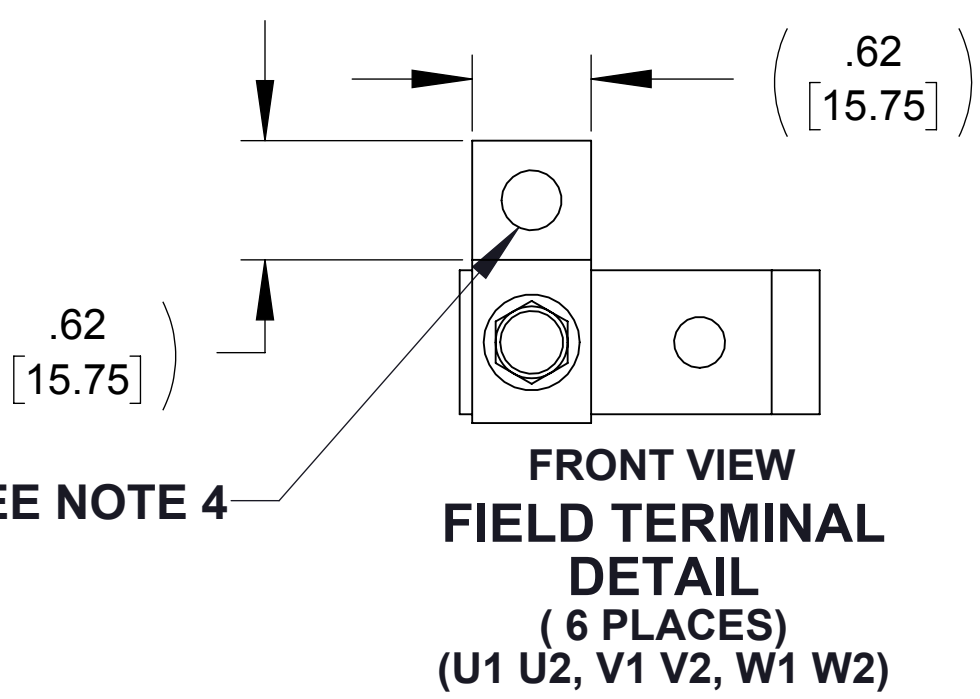
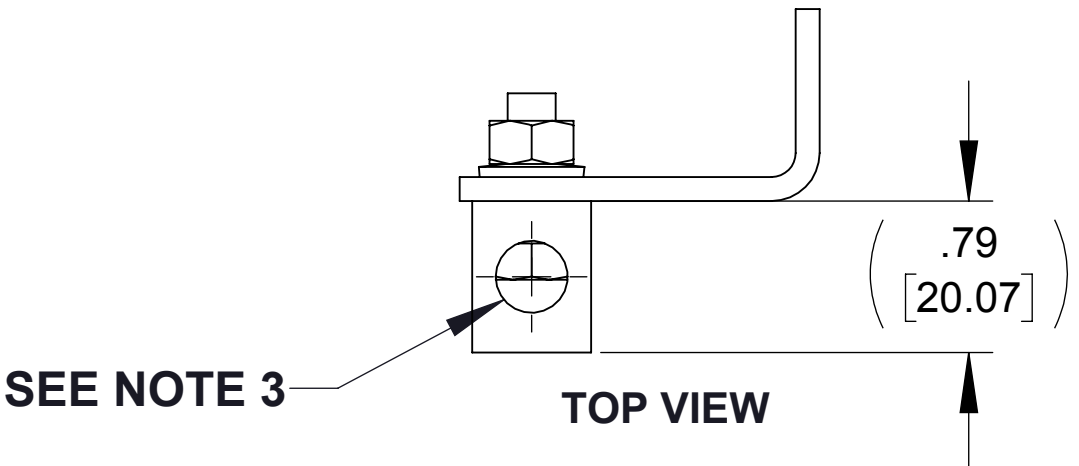
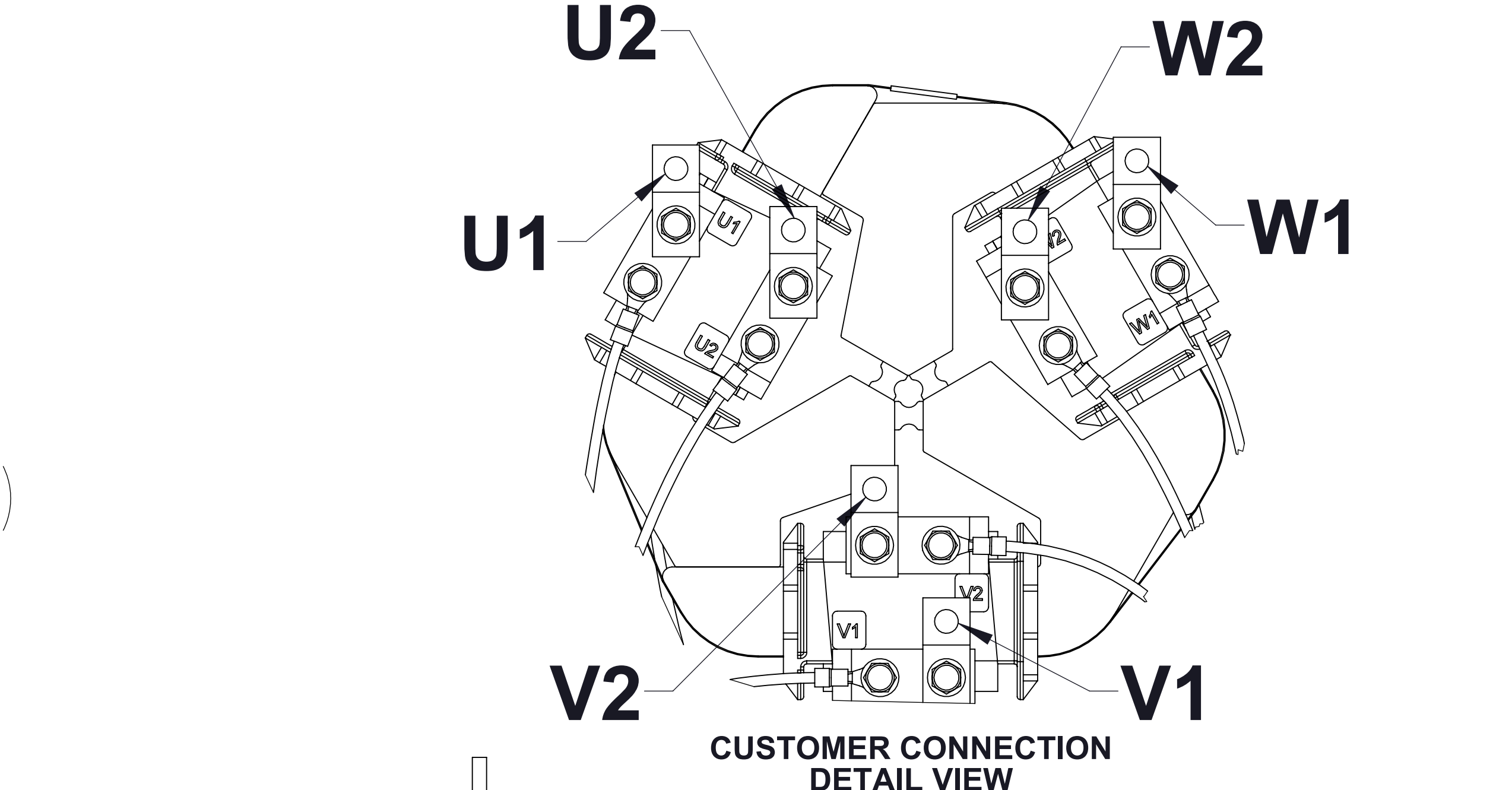
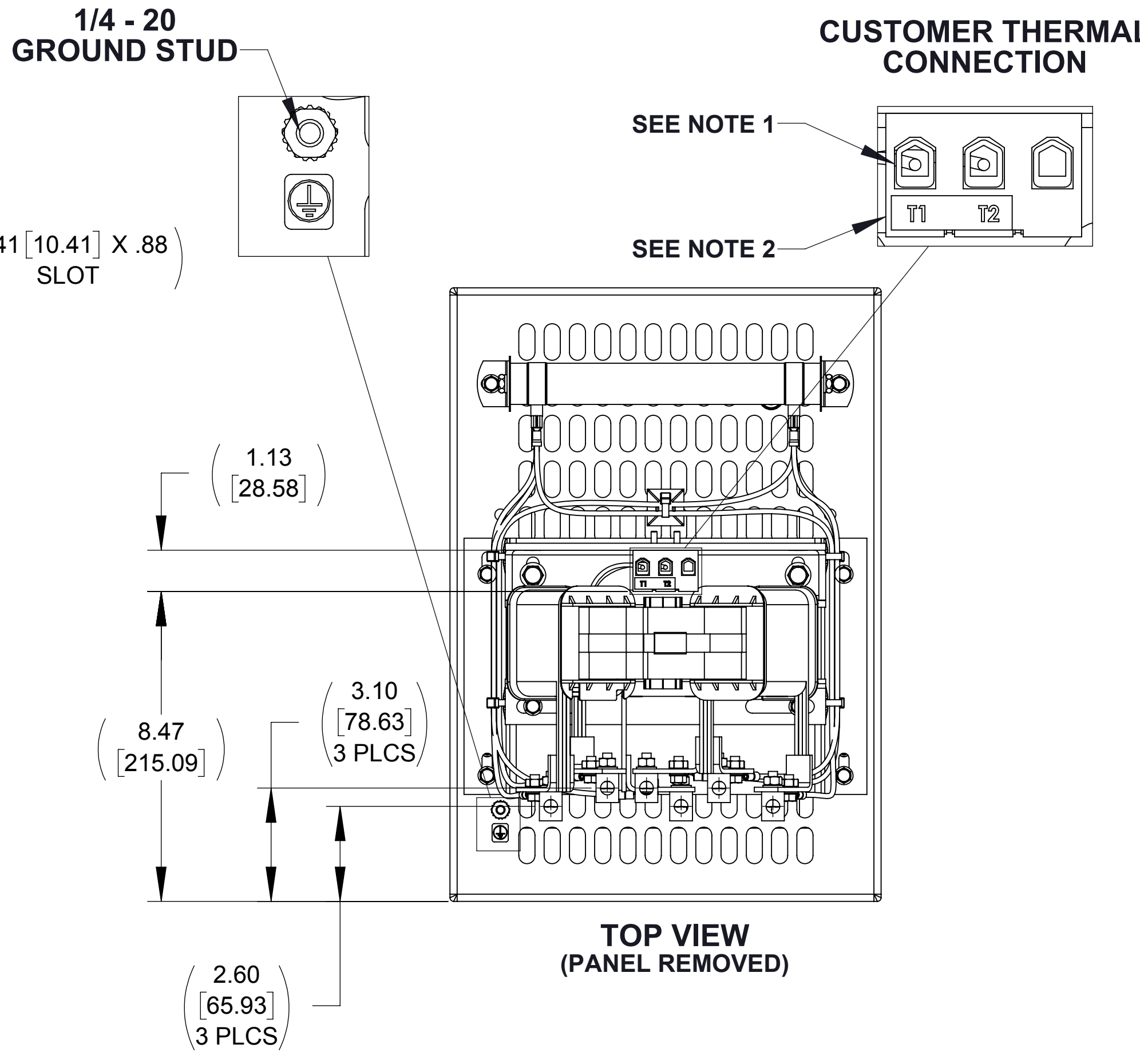
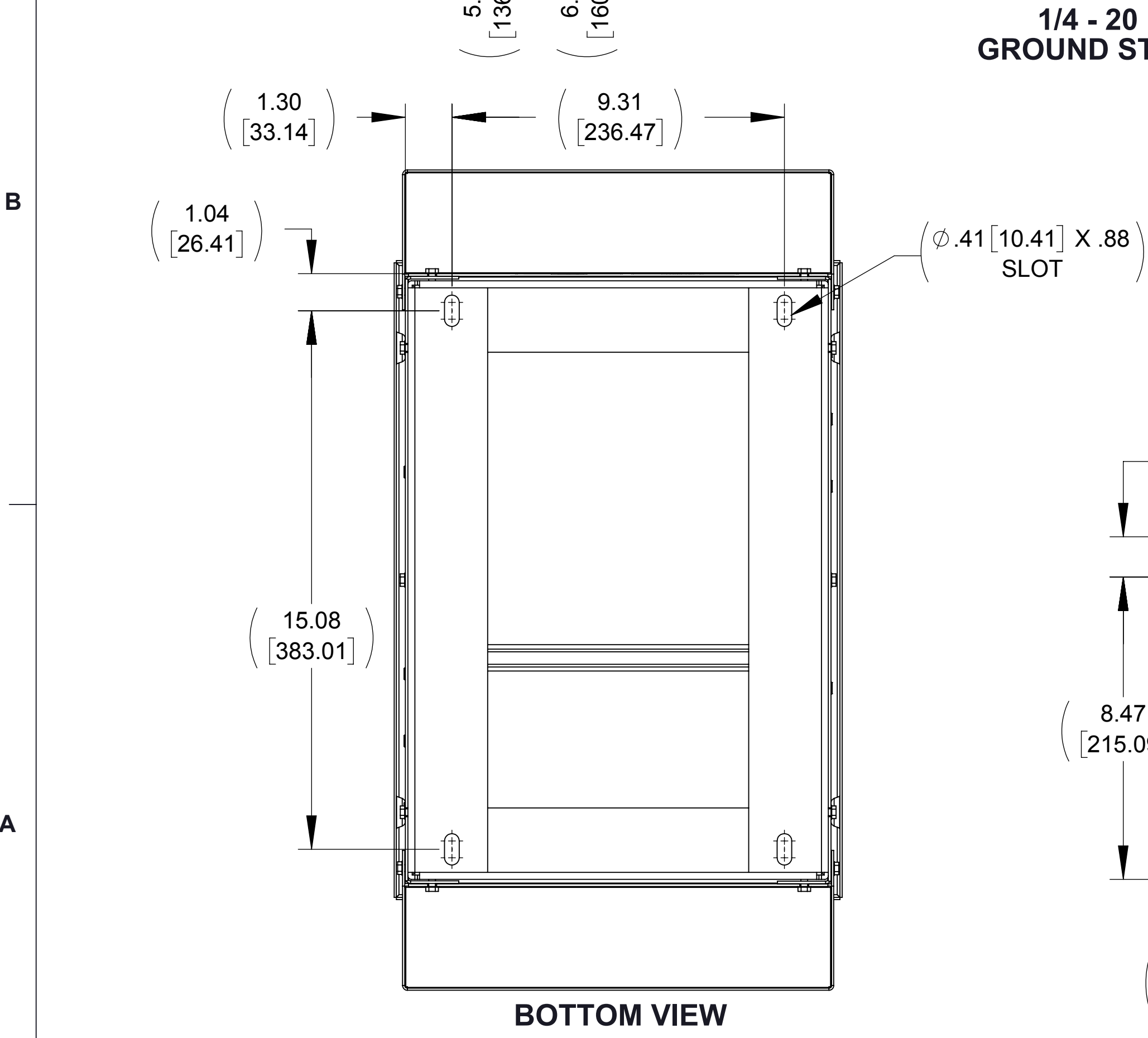
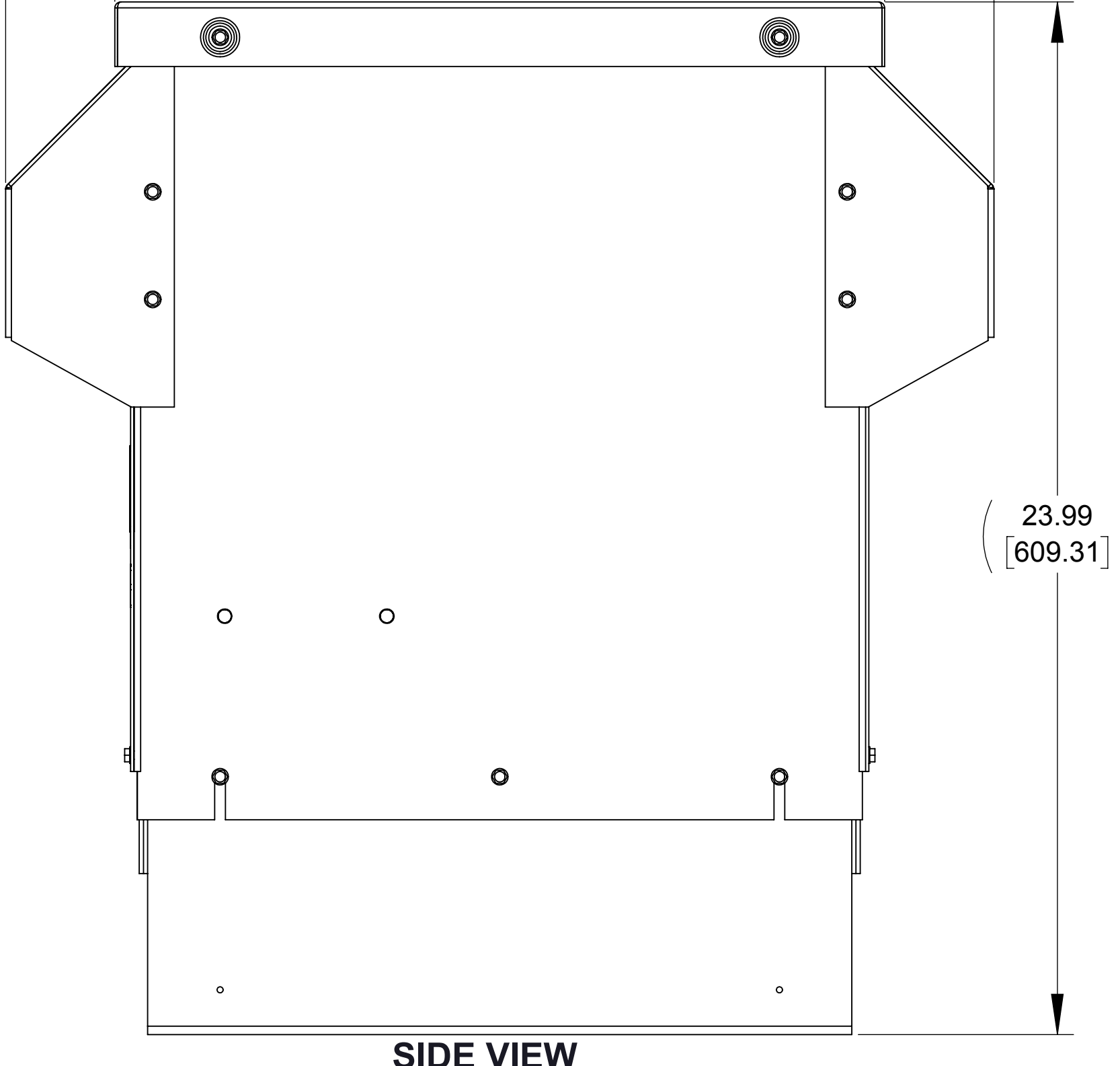
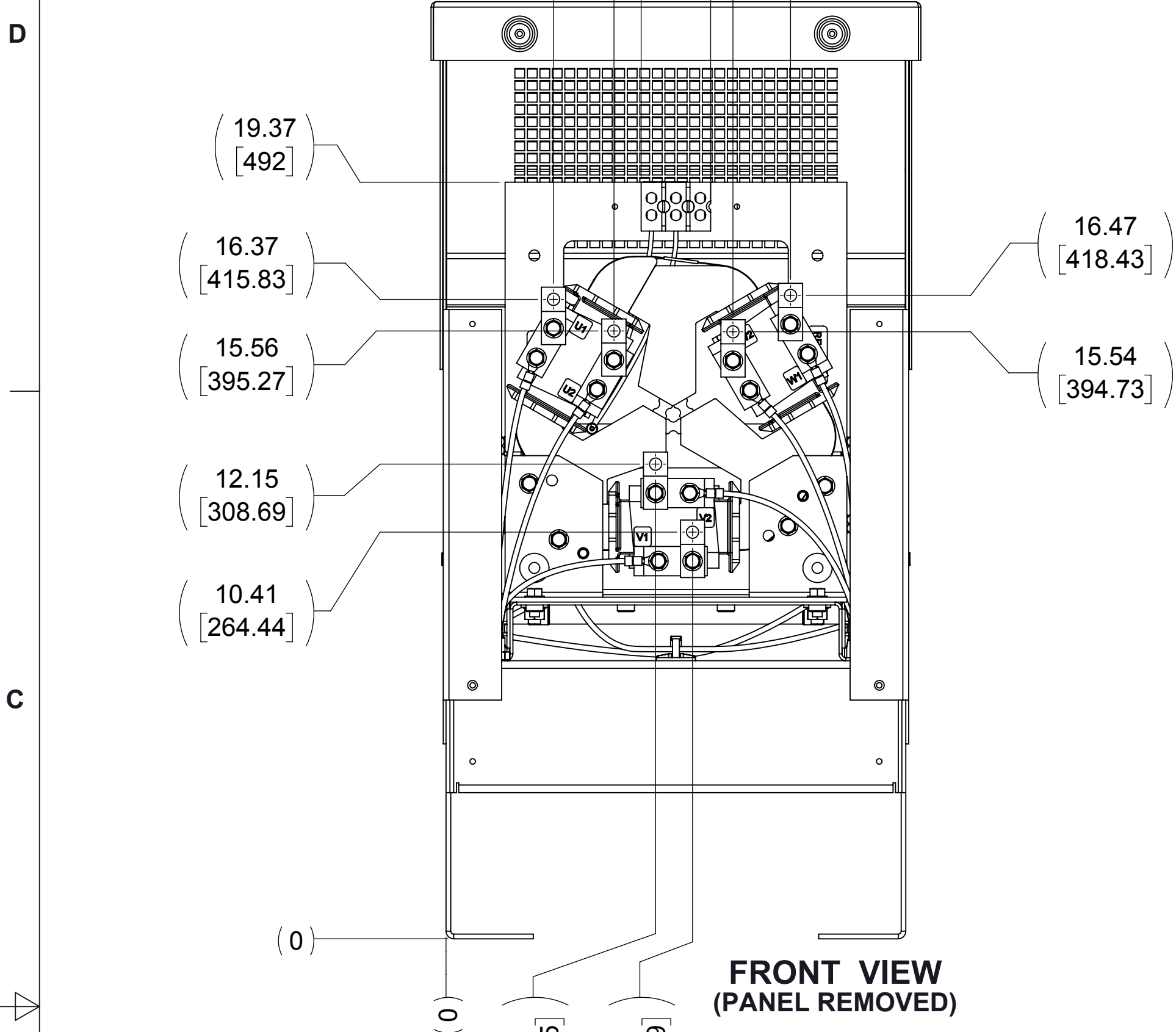
A

D

C

B

A



**NOTES:**

- WIRE RANGE: 4 - 18 AWG.
- TERMINAL SCREW TIGHTENING TORQUE: 16 IN/LBS
- WIRE RANGE: 1/0 - 14 AWG.
- TERMINAL SCREW TIGHTENING TORQUE: (1/0-3AWG) 50 IN/LBS, (4-6AWG) 45 IN/LBS, (8AWG) 40 IN/LBS, (10-14AWG) 35 IN/LBS

THE COMPONENT, PART OR ASSEMBLY DESCRIBED IN THIS DOCUMENT MUST COMPLY WITH THE EU(EUROPEAN UNION) DIRECTIVE RoHS2		MATERIAL		CONFIDENTIAL AND PROPRIETARY INFORMATION THIS DOCUMENT CONTAINS CONFIDENTIAL AND PROPRIETARY INFORMATION OF MTE CORPORATION AND MAY NOT BE USED, COPIED OR DISCLOSED TO OTHERS EXCEPT WITH THE AUTHORIZED WRITTEN PERMISSION OF MTE CORPORATION	
CONTAINS <0.1% OF ANY SVHC BY WEIGHT PER REACH REGULATION				DESCRIPTION	
UNLESS OTHERWISE SPECIFIED DIMENSIONS ARE IN INCHES [MM] TOLERANCES ARE: ANGLES: ± 1 ° 1 PLACE .XX: ± .1 [2.5] 2 PLACE .XX: ± .03 [0.76] 3 PLACE .XXX: ± .010 [0.254]		<b>MTE</b> AN BL POWER ELECTRONICS COMPANY N83 W13330 Leon Road Menomonee Falls, WI 53051 USA 800.455-4683 262.253-8200		DV SENTRY 80A 380-600V FILTER, NEMA 3R ENCL.	
DRAWN MM	DATE 06/11/14	CHECKED TM	DATE 01/18/17	SIZE D	DWG No. CD DVSW0080E
APPROVED TM	DATE 01/18/17	REV 02	SHEET 1 OF 1		