

Basic Setup Steps

1. Power the module and connect via ethernet to a computer.
2. Set IP address on computer to the same network as module.
(Ex: 192.168.1.50) *Note: restore computer settings after setup.*
3. To configure module, open web browser and enter:
`http://192.168.1.2/setup.html`
4. In General Settings under WiFi, enter the WiFi settings.
5. Assign the module a permanent IP address or enable DHCP.
6. Restart the module for the settings to take effect.

Factory Default Settings

IP Address: 192.168.1.2

Subnet Mask: 255.255.255.0

Control Page Web Address: `http://192.168.1.2`

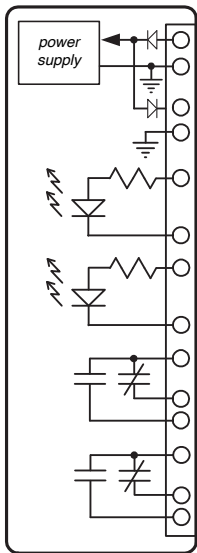
Control Password: *(no password set)*

Setup Page Web Address: `http://192.168.1.2/setup.html`

Setup Username: admin

Setup Password: webrelay *(all lower case)*

X-40IW | Pinout Diagram



Vin+

Power Supply Input +

Vin-

Power Supply Input -

Vout

Vin - 0.7V (or 11V with POE)

Gnd

Ground (common)

In1+

Optically-Isolated Input 1 +

In1-

Optically-Isolated Input 1 -

In2+

Optically-Isolated Input 2+

In2-

Optically-Isolated Input 2-

1C

Relay 1 common

1NC

Relay 1 Normally Closed

1NO

Relay 1 Normally Open

2C

Relay 2 Common

2NC

Relay 2 Normally Closed

2NO

Relay 2 Normally Open



www.ControlByWeb.com

1681 West 2960 South, Nibley, UT 84321, USA