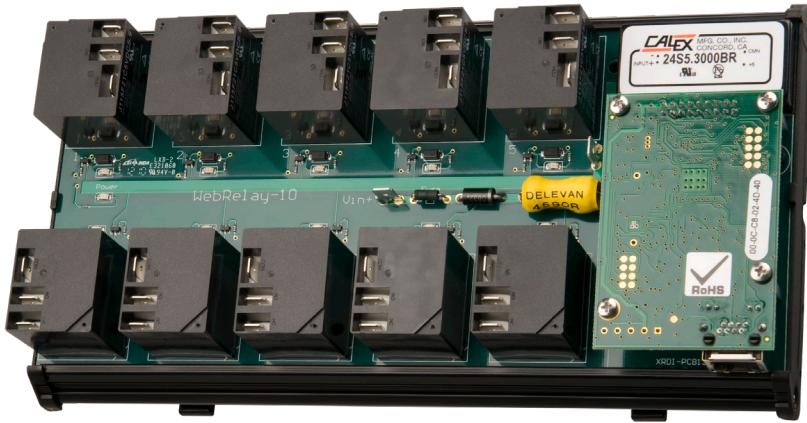


PRODUCT OVERVIEW



WebRelay-10™ is a robust, industrial relay board with Ethernet communications. It provides remote relay control through its ten large 30-Amp relays.

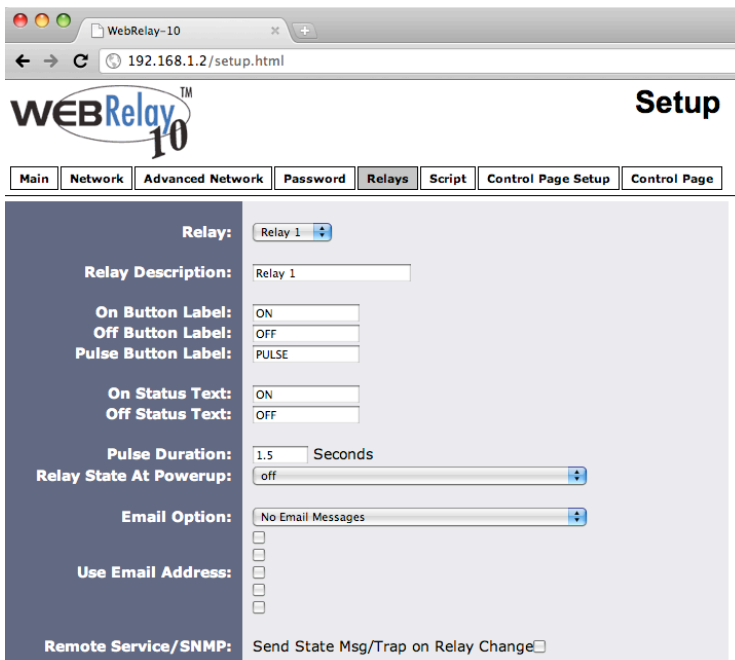
The relays can be individually controlled using a standard web browser or by sending commands from a custom control application.

It is self-contained with a built-in web server, and requires no external software, additional network modules, or computers.

WebRelay-10™ is designed for industrial applications and can be DIN-Rail mounted inside a control cabinet. Tab connectors (1/4 inch) are used for power and relay contact connection.

Features:

- Ten independent 30-Amp Relays (Form C, SPDT).
- Built-in web server for browser-based setup and control.
- No special software or device drivers required.
- XML status and control page make communications with custom computer applications simple.
- Can operate as a Modbus TCP/IP slave.
- On/Off and Pulse modes.
- Wide power supply range (10-36 VDC).
- DIN-Rail mountable.
- LEDs indicate the current relay state.
- 1/4" tab-connectors.
- UL/CUL listed relays (E197852).



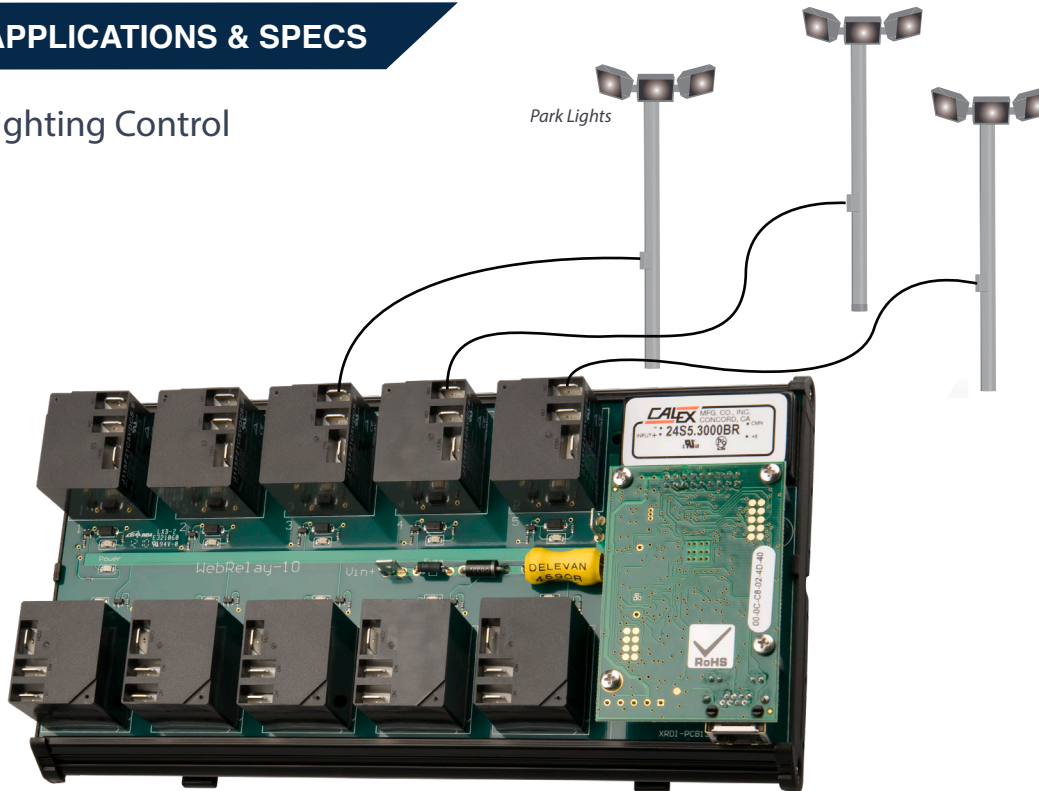
Relay Setup Page



WebRelay-10 Control Page

APPLICATIONS & SPECS

Lighting Control



Additional Applications

- ✓ Automation Controller
- ✓ Industrial Automation
- ✓ Car Wash Industry
- ✓ More...

Models:

- X-WR-10R12-I

Power Requirements

- Voltage: 10-36VDC
- Max Current: 53mA - 1.2A
- Note: Current based upon voltage applied and device settings. See users manual for complete breakdown.

Relay Contacts

- Number of Relays: 10
 - N.O.
 - 40A @ 240VAC resistive
 - 30A @ 277VAC General Purpose
 - 2hp @ 250VAC
 - N.C.
 - 30A @ 240VAC, 30VDC resistive
 - 20A @ 277VAC General Purpose
 - 1-1/2 hp @ 250VAC
- Contact Type: SPDT (Form 1C)
- Load Type: General Purpose
- Contact Resistance: < 30 milliohms initial
- Contact Material: AgSnO2
- Electrical Life: 100K cycles (Typical)
- Mechanical Life: 10M cycles (Typical)
- Environmental Rating: Over voltage Category II, Pollution Degree 2
- Relay Modes: ON/OFF or Pulse
- Pulse Timer Duration: 0.1 to 86,400 Seconds (1-day)
- Relay Connections: 1/4" Tab Terminals

Real-Time Clock

- Manual or NTP(Network Time Protocol) setup
- NTP Sync Period: Once, Daily, Weekly, On Power-up
- Auto Daylight Savings Adjustment
- Battery (capacitor) Power Backup

Capacitor Power Backup

- Backup Functions: Retain Real-Time Clock, External Variables, Relay State
- Backup Duration: 3 days minimum

Network

- Type: 10/100 Base-T Ethernet Port
- Setup: Static IP address assignment, HTTP port selectable

LED Indicators

- Number of LEDs: 13
 - Power on
 - Relay coil energized 1-10
 - Network linked
 - Network activity

Physical

- Size:
 - 9.125in (232mm) wide
 - 4.25in (126mm) tall
 - 2.425in (62mm) deep
- Weight: 22 oz (626 grams)
- Enclosure Material: PVC
- Enclosure Flame Rating: UL94 V1
- Operating Temperature: -40°F to 150°F (-40°C to 65.5°C)

Protocols

- HTTP, XML, Modbus, SNMP, SMTP, Remote Services, and Remote Monitoring

Logging

- Log File Size: 512K max 17900 logs
- Storage: Nonvolatile Flash
- Buffer Architecture: Circular Buffer
- Log data can be periodically read and stored on a computer

Password Settings

- Password protection on setup page: Yes
- Password protection on control page: Optional
- Password Encoding: Base 64
- Max Password Length: 10 Characters

Electromagnetic Compliance

- IEC CISPR 22, CISPR 24
- FCC 47CFR15 (Class B)
- EN55024 ITE Immunity (2010)
- EN55022 Emissions (2010)

Product Safety Compliance

- IEC 61010-1

