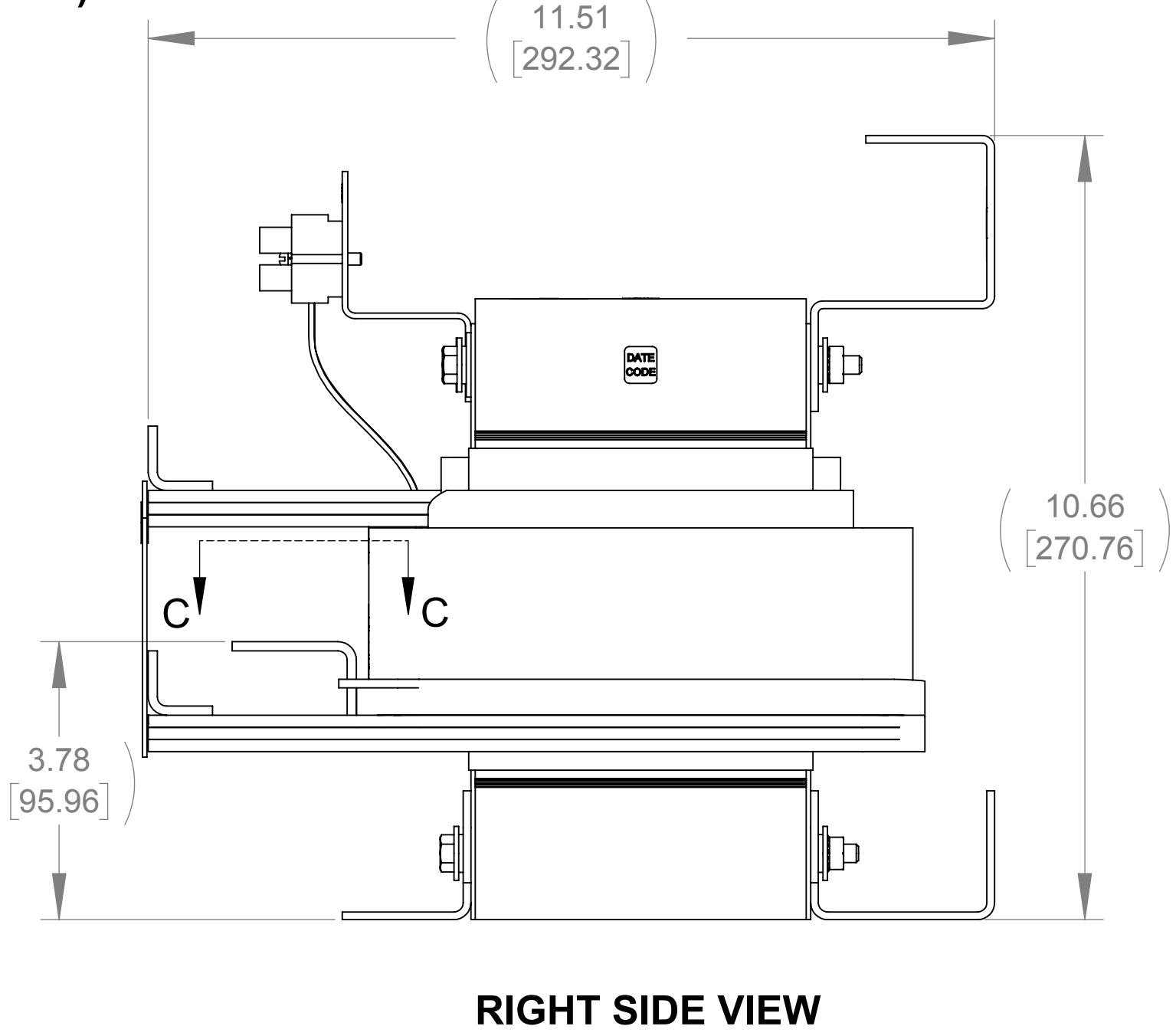
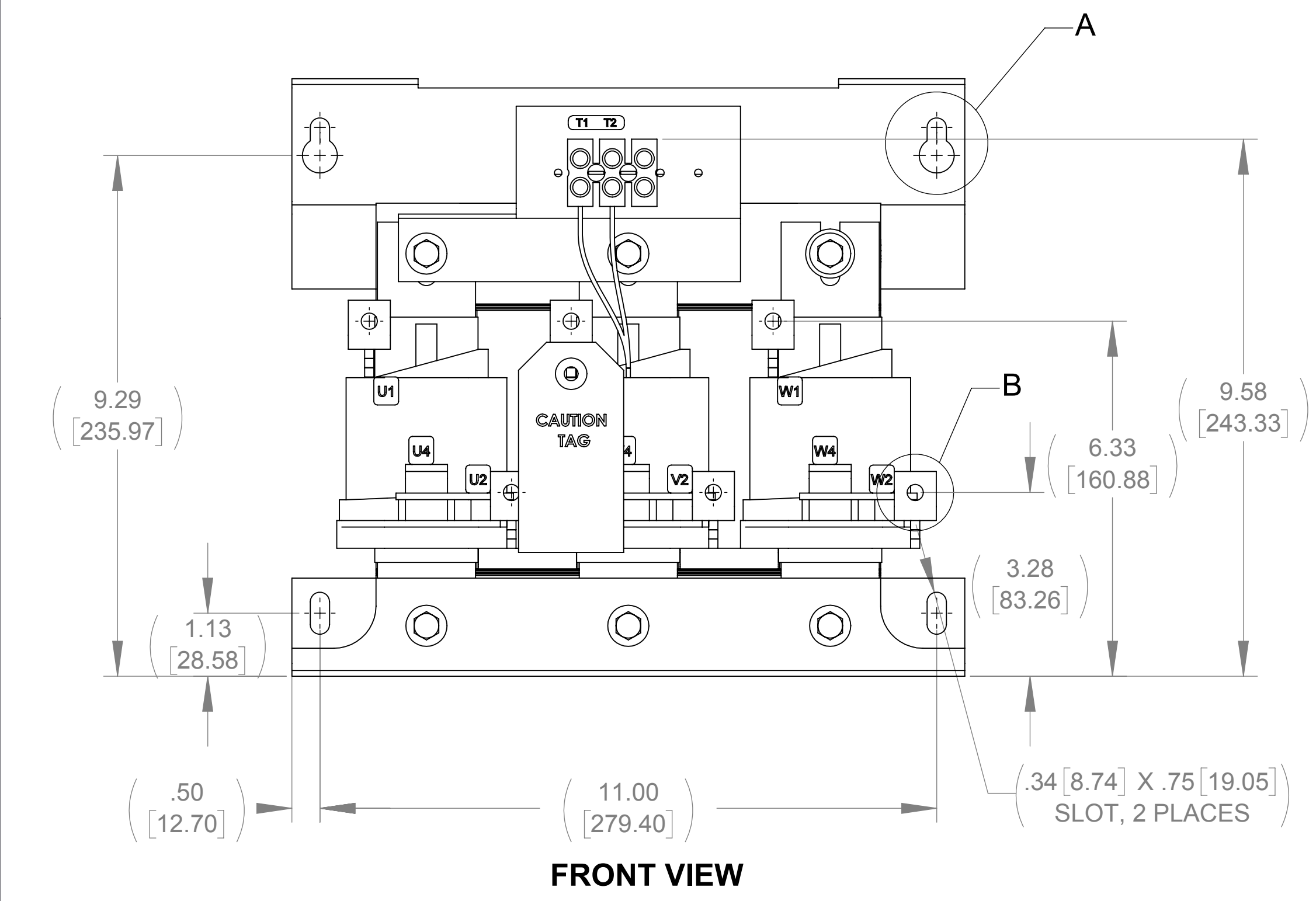
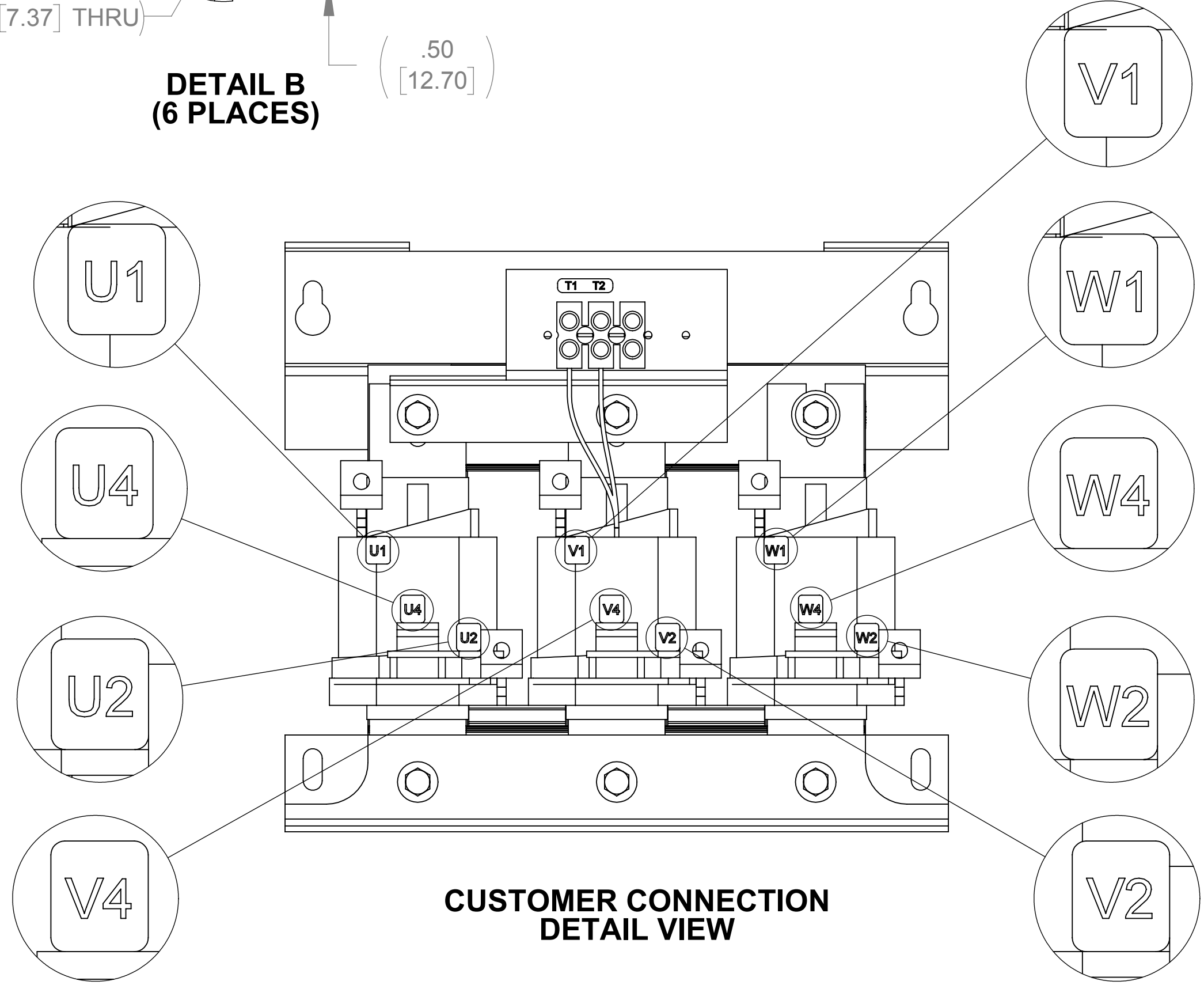
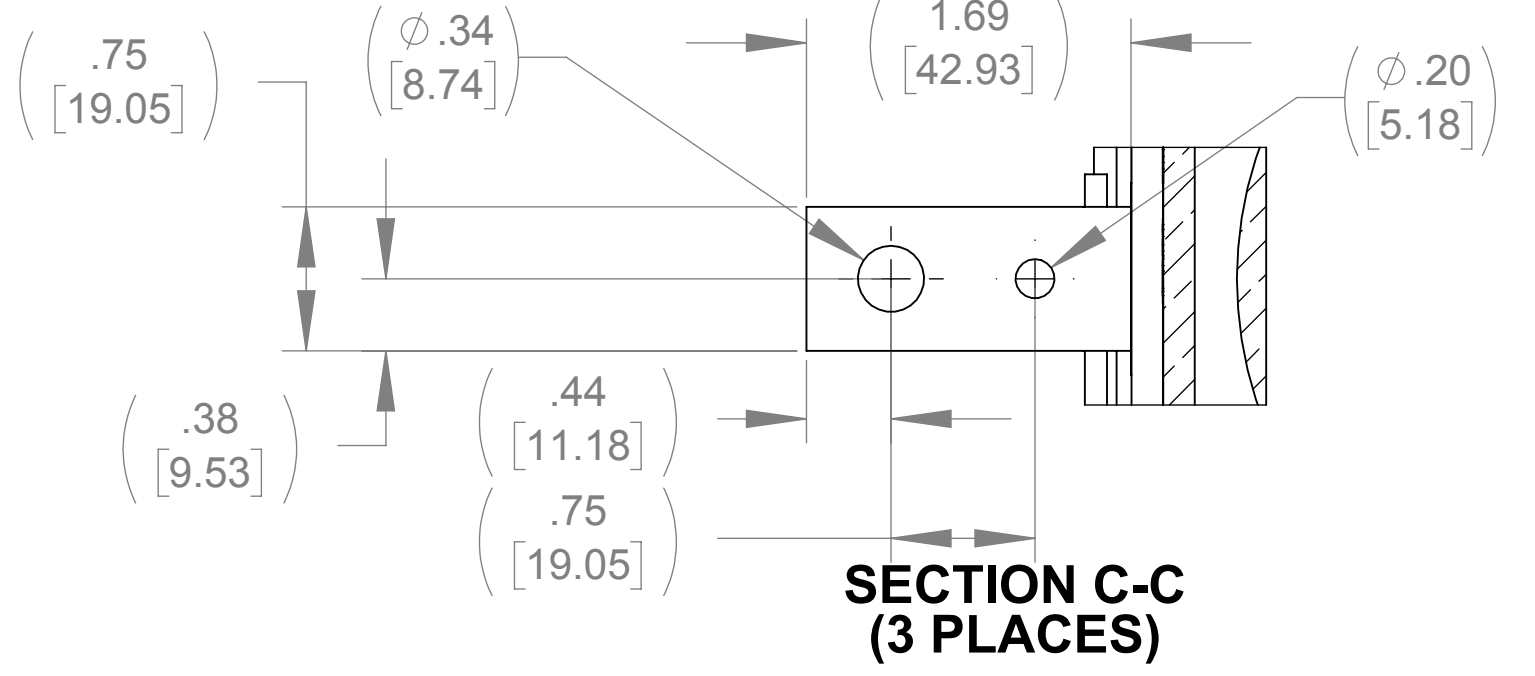
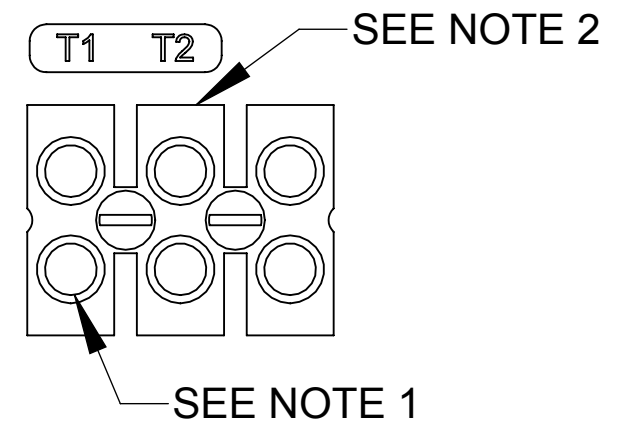
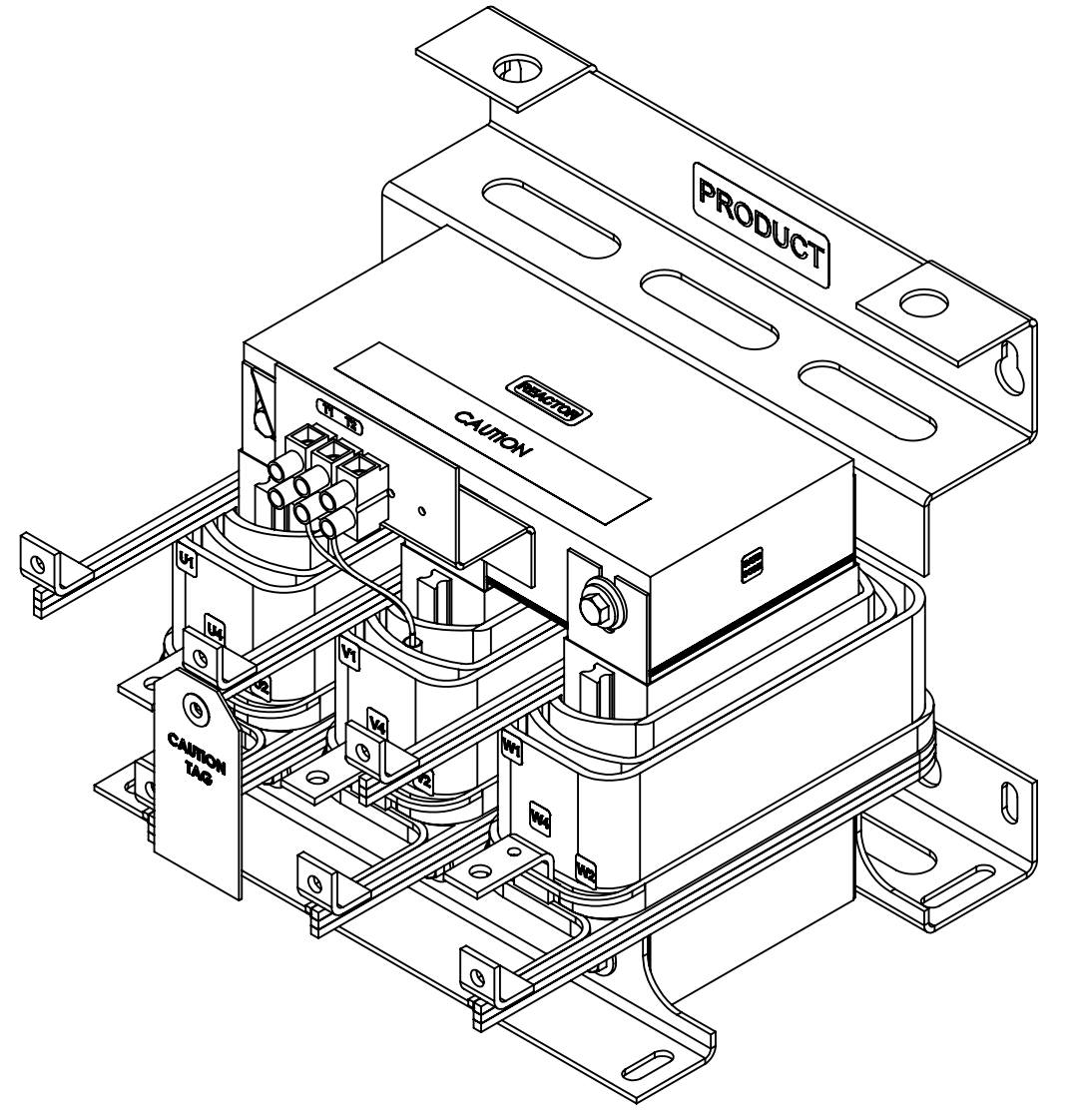
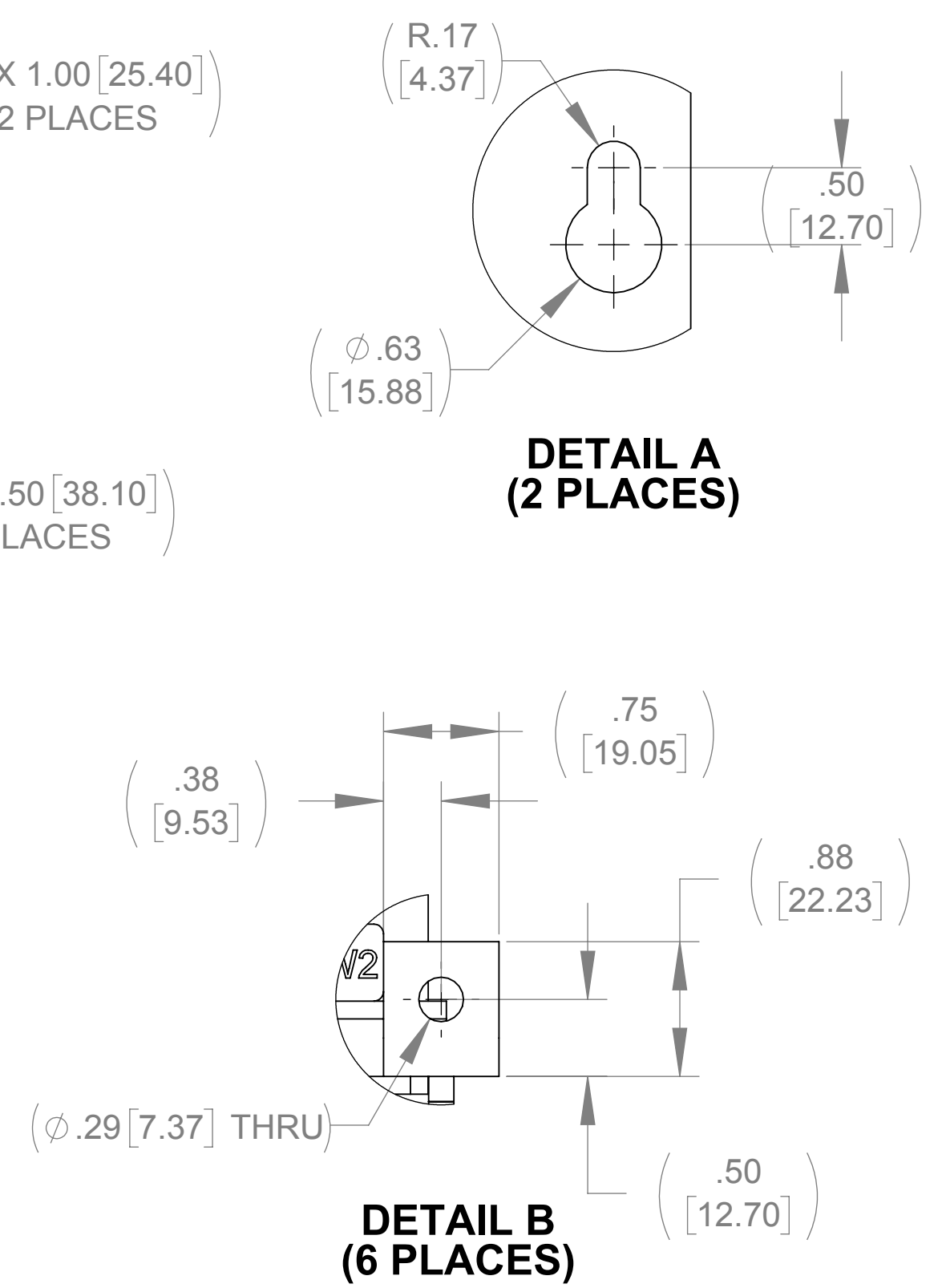
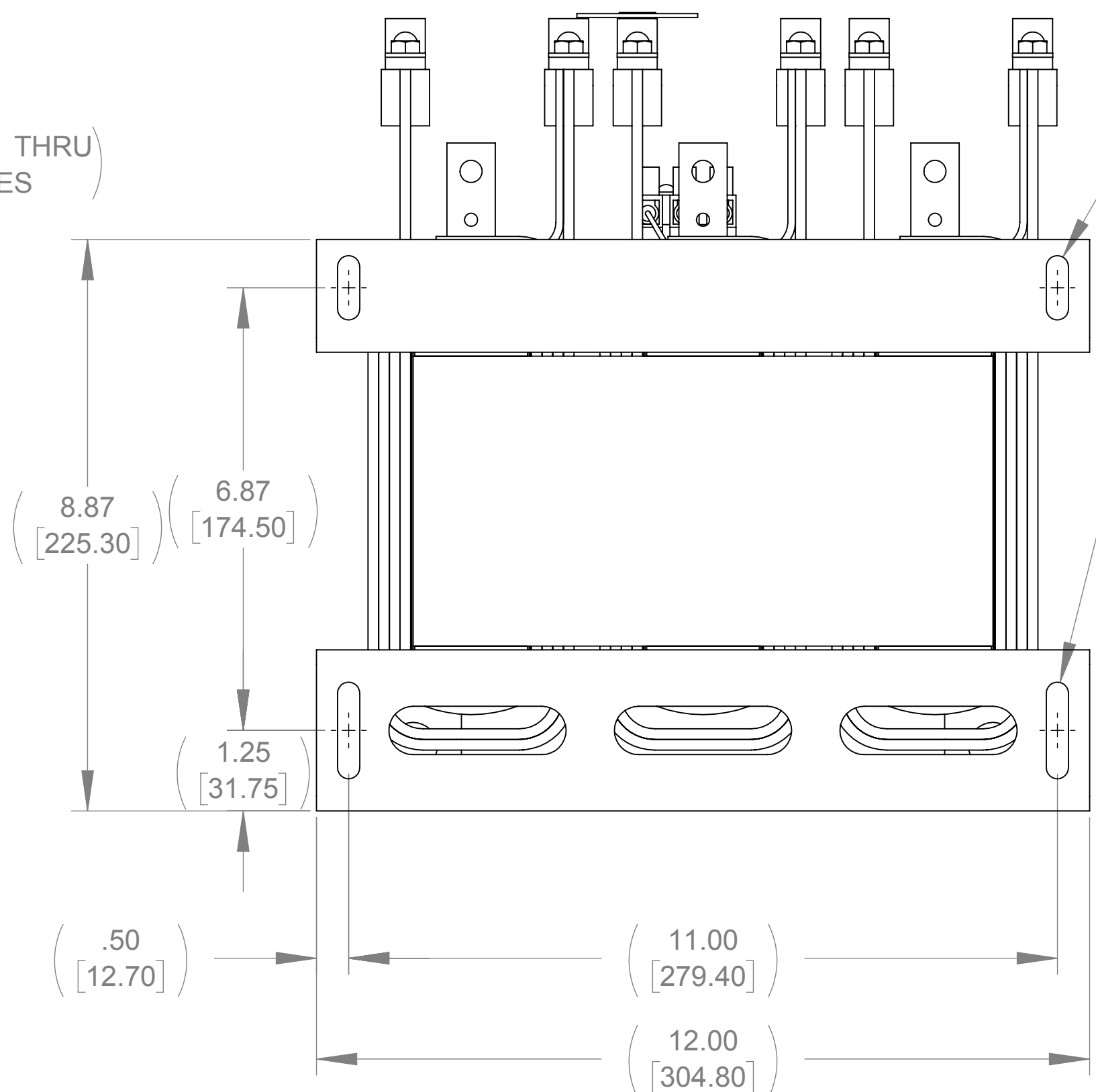
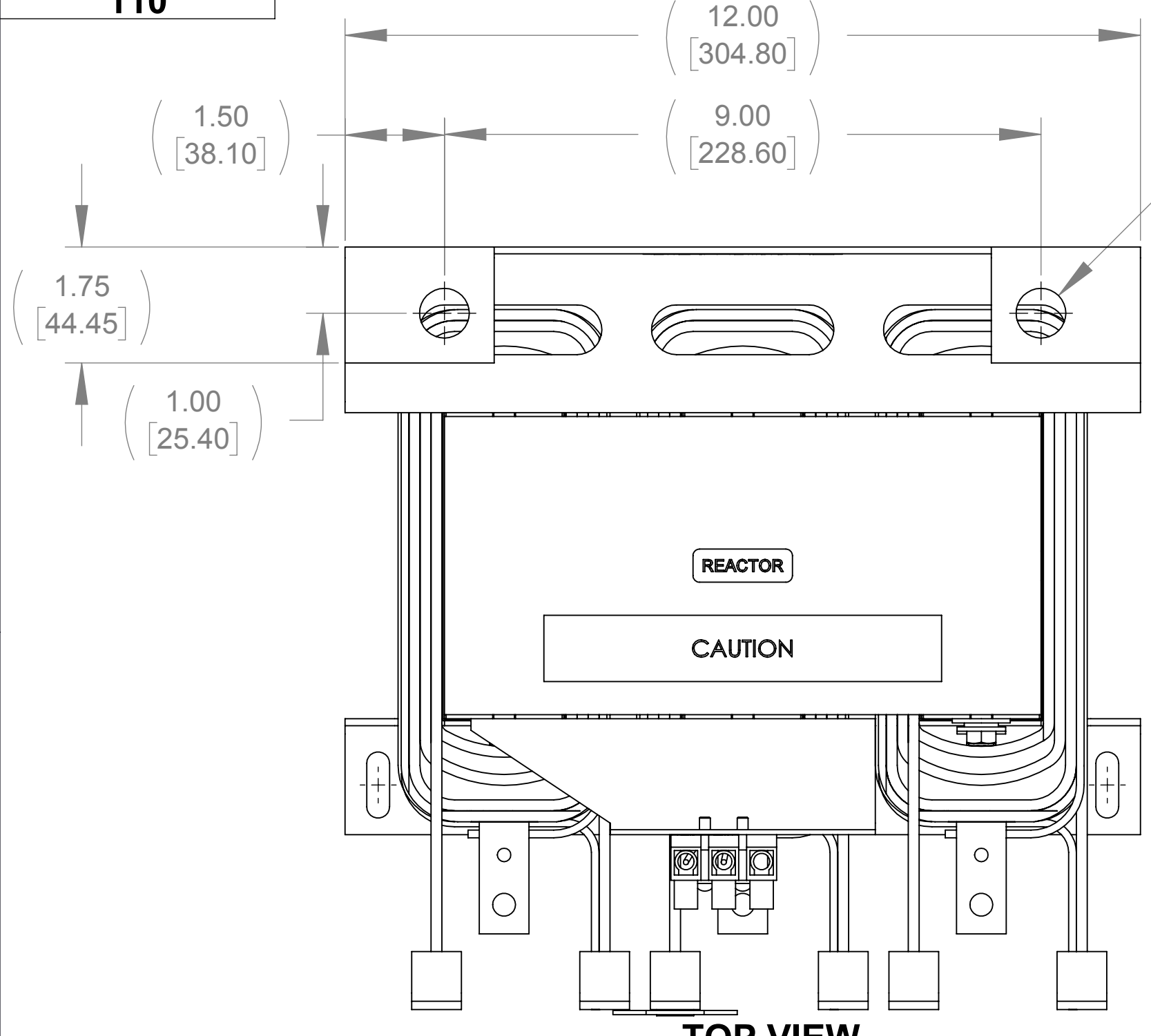


WEIGHT (LBS)
110

ECO No	DESCRIPTION	REV BY	DATE
M9353	MOVE PRODUCT LABEL FROM REACTOR TO BRACKET	MN	10/28/14



- NOTES:**
1. TIGHTEN TERMINAL BLOCK SCREWS TO 16 IN/LBS. TORQUE, MAX.
 2. TERMINAL WIRE SIZE: 4-14 AWG.
 3. FILTER REQUIRES: CAP-516SW (QTY. 1).

THE COMPONENT, PART OR ASSEMBLY DESCRIBED IN THIS DOCUMENT MUST COMPLY WITH THE EU (EUROPEAN UNION) DIRECTIVE RoHS2 CONTAINS <0.1% OF ANY SVHC BY WEIGHT PER REACH REGULATION		MATERIAL DRAWN: MN, DATE: 09/13/13 CHECKED: JM, DATE: 11/04/14 APPROVED: JM, DATE: 11/04/14		CONFIDENTIAL AND PROPRIETARY INFORMATION THIS DOCUMENT CONTAINS CONFIDENTIAL AND PROPRIETARY INFORMATION OF MTE CORPORATION AND MAY NOT BE USED, COPIED OR DISCLOSED TO OTHERS EXCEPT WITH THE AUTHORIZED WRITTEN PERMISSION OF MTE CORPORATION	
UNLESS OTHERWISE SPECIFIED DIMENSIONS ARE IN INCHES (MM) TOLERANCES ARE: ANGLES: $\pm 1^\circ$ 1 PLACE .X: $\pm .1 [2.5]$ 2 PLACE .XX: $\pm .03 [0.76]$ 3 PLACE .XXX: $\pm .010 [0.254]$		 N83 W13330 Leon Road Menomonee Falls, WI 53051 USA 800.455.4683 262.253.8200		DESCRIPTION SWG 130A 380-480V 2-8kHz	
		SIZE: D, DWG No.: CD SWGM0130D, REV: 02		SCALE: 1:2, SHEET 1 OF 1	