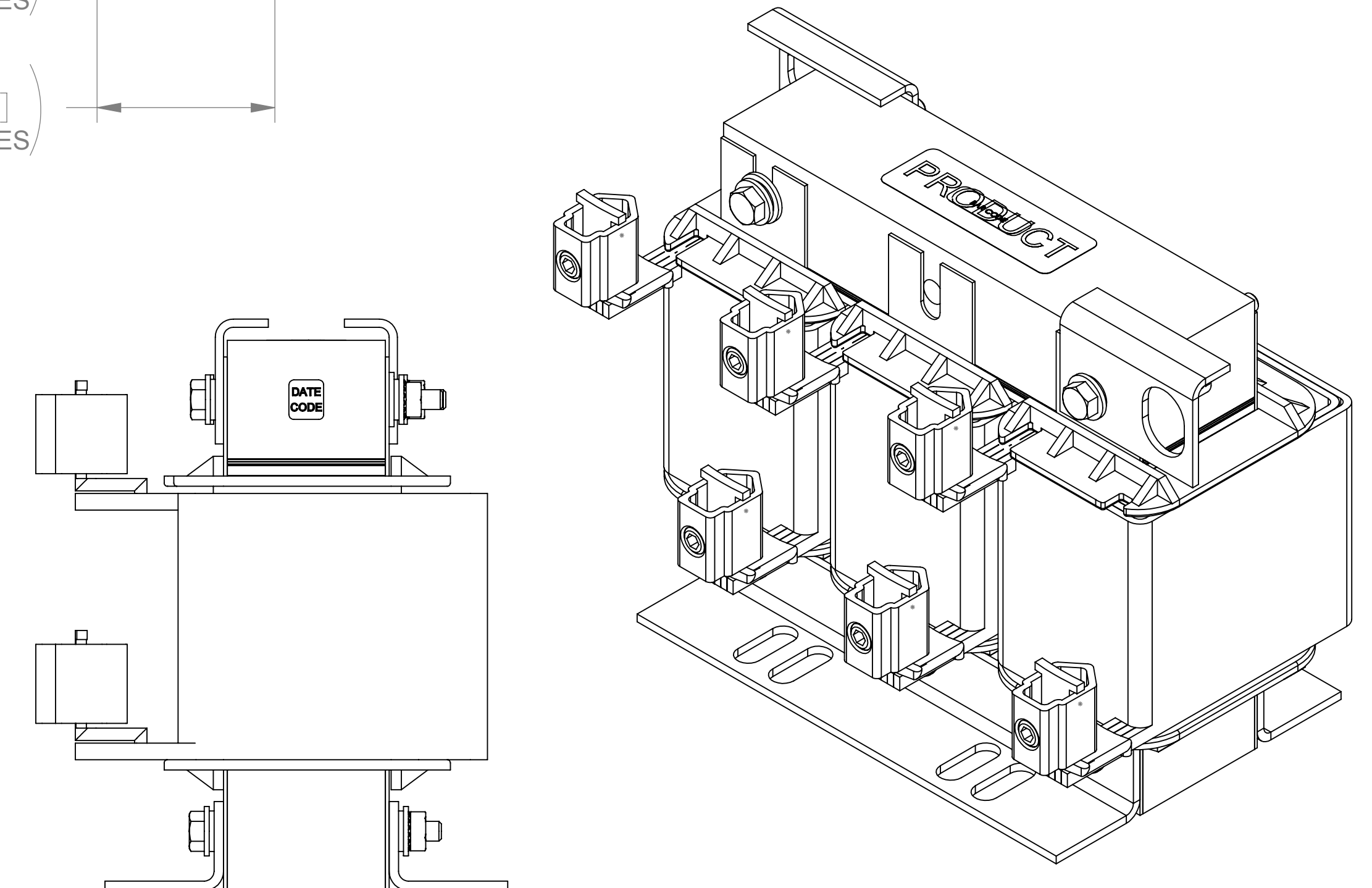
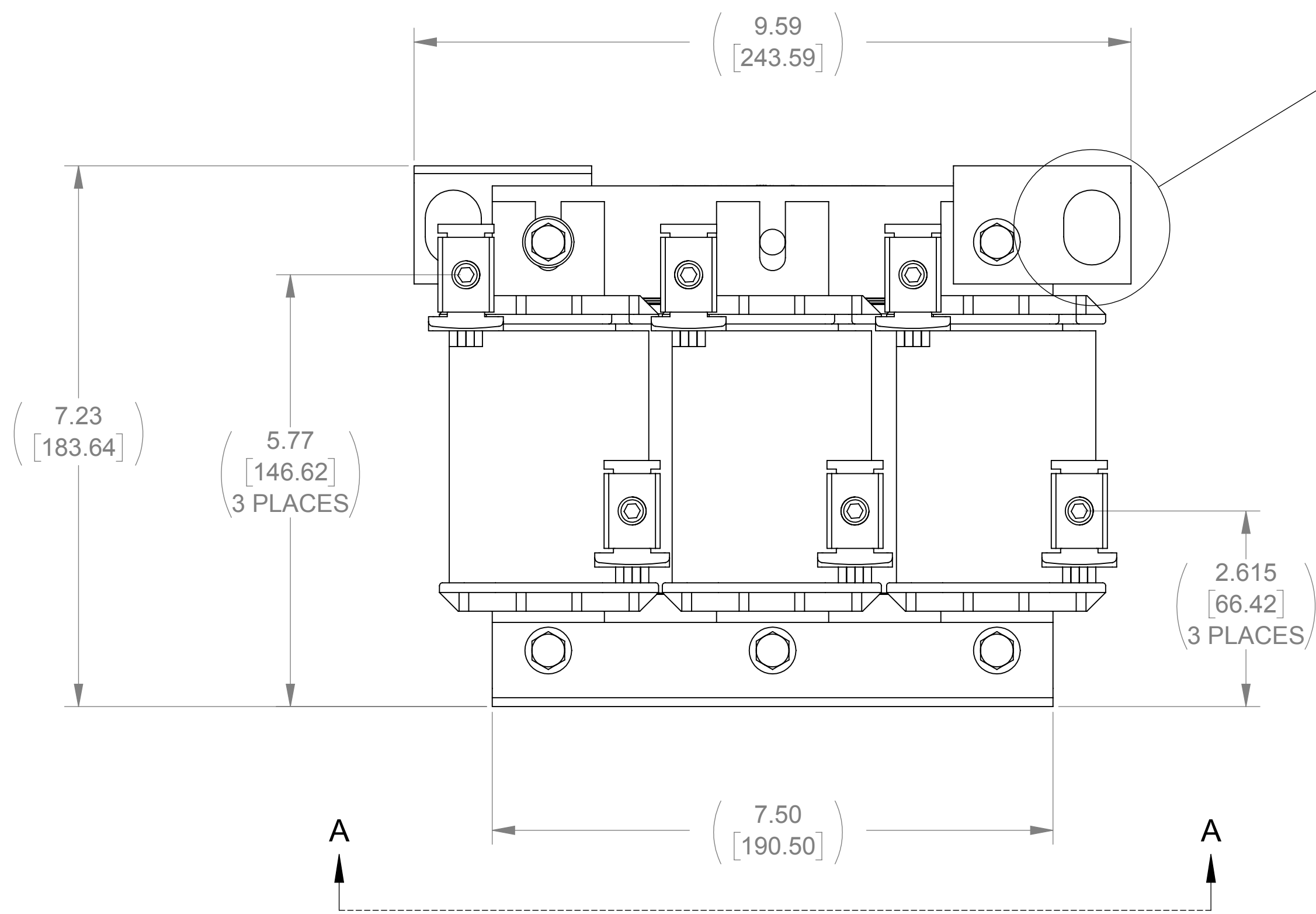
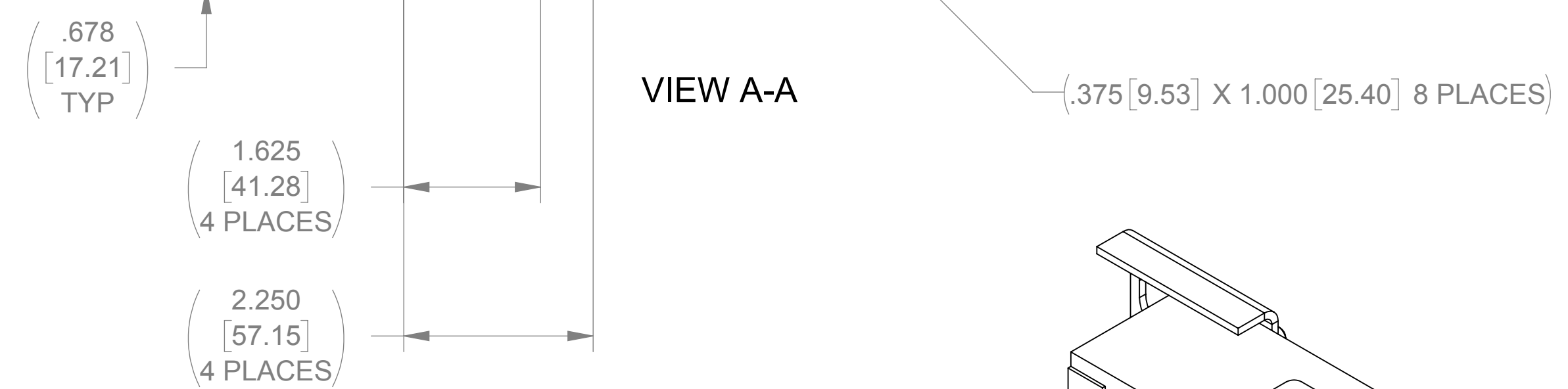
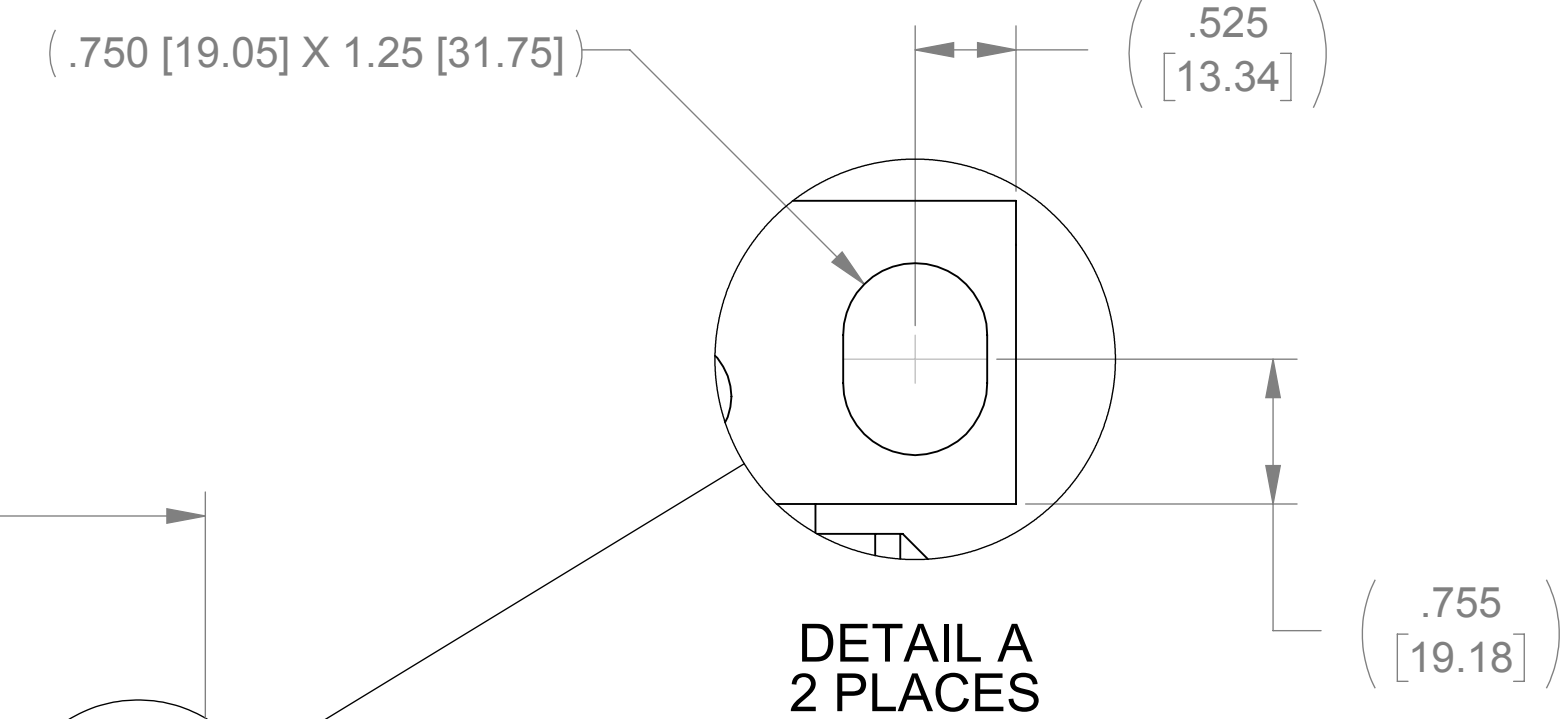
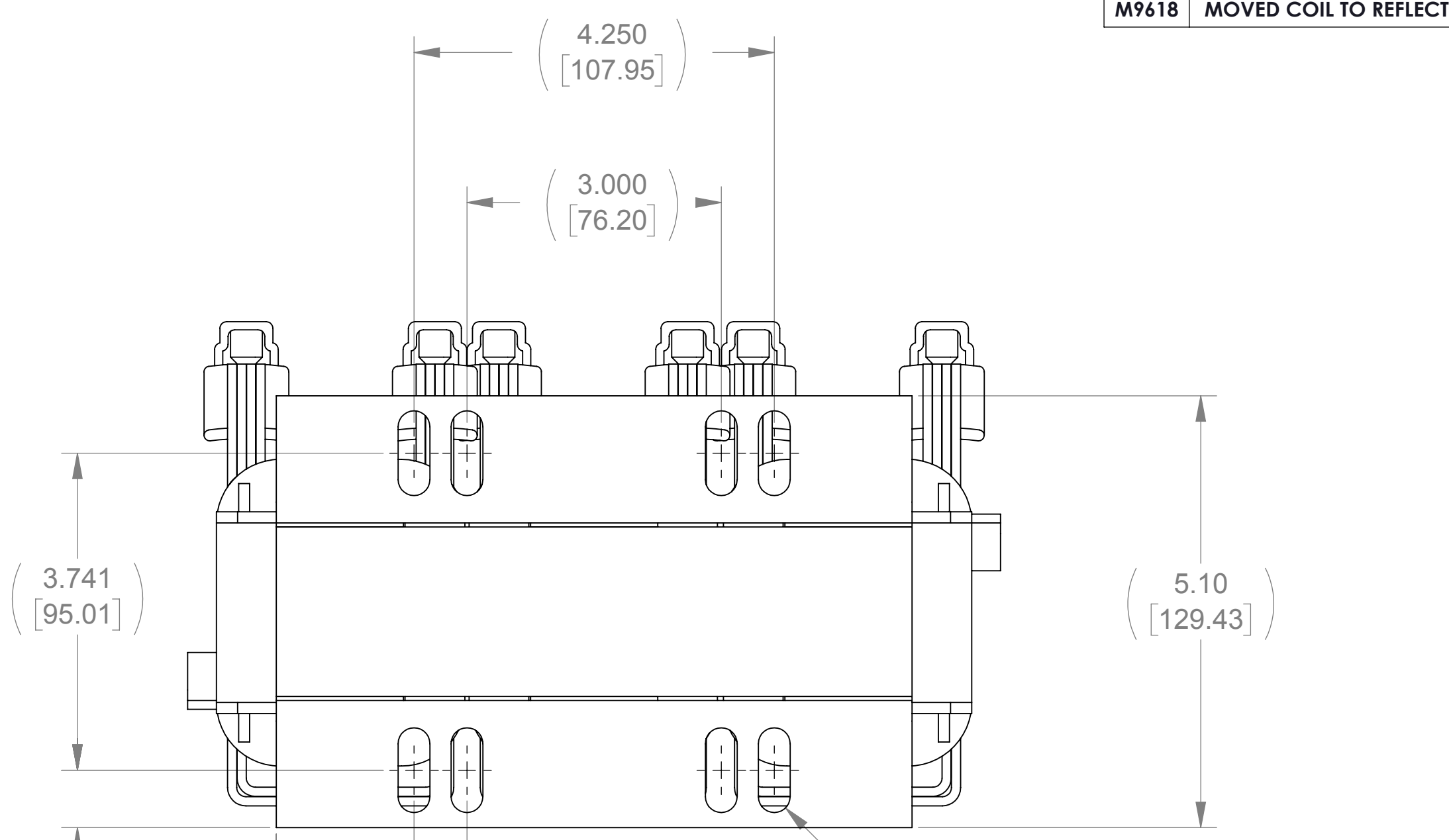
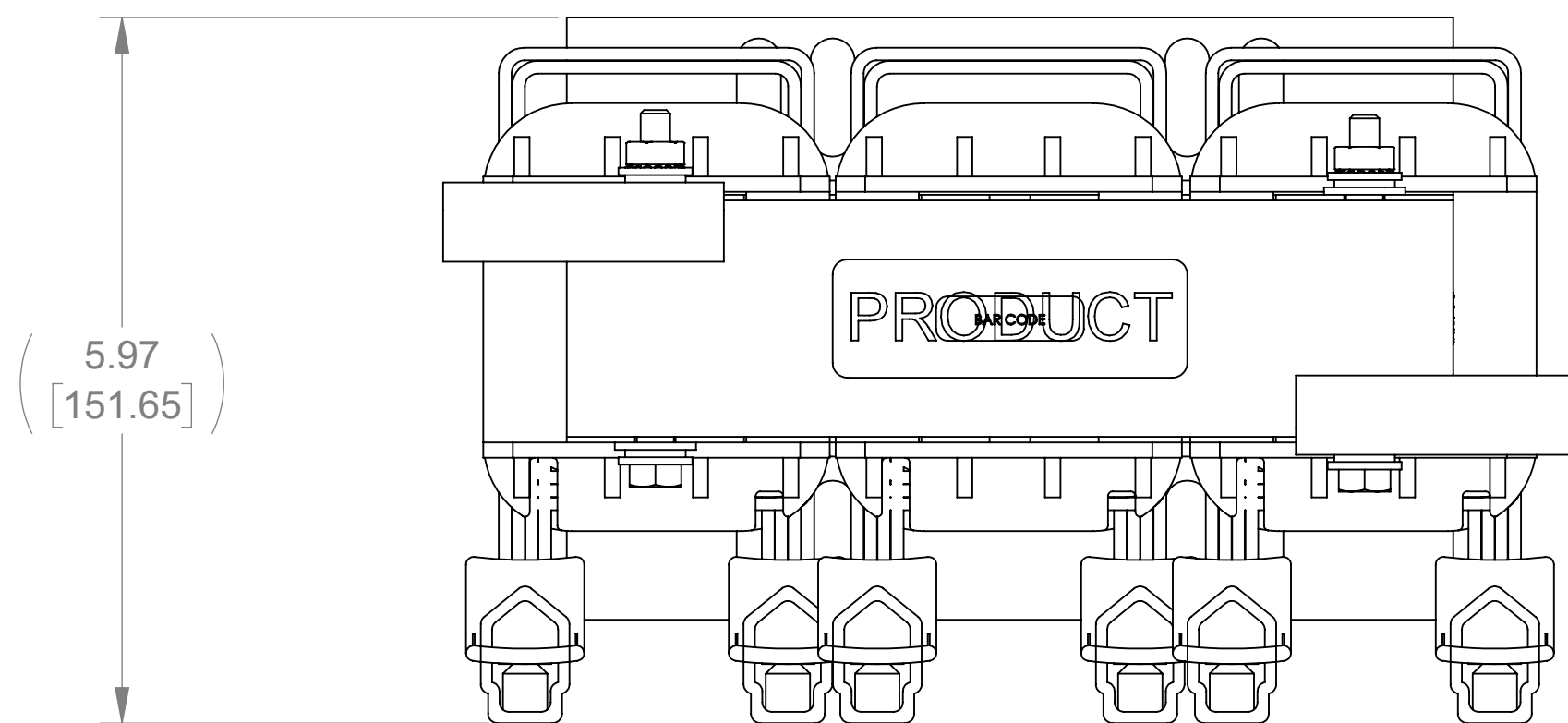


WEIGHT (LBS)	INDUCTANCE	LOSS (WATTS)
43	0.2 mH	180

ECO No	DESCRIPTION	REV BY	DATE
M9618	MOVED COIL TO REFLECT AS BUILT	RAH	07/01/15



- NOTES:
 1. TERMINAL SCREW TORQUE 150 IN-LBS MAX
 2. WIRE RANGE: 2-0000 AWG

THE COMPONENT, PART OR ASSEMBLY DESCRIBED IN THIS DOCUMENT MUST COMPLY WITH THE EU (EUROPEAN UNION) DIRECTIVE RoHS2 CONTAINS <0.1% OF ANY SVHC BY WEIGHT PER REACH REGULATION		MATERIAL		CONFIDENTIAL AND PROPRIETARY INFORMATION THIS DOCUMENT CONTAINS CONFIDENTIAL AND PROPRIETARY INFORMATION OF MTE CORPORATION AND MAY NOT BE USED, COPIED OR DISCLOSED TO OTHERS EXCEPT WITH THE AUTHORIZED WRITTEN PERMISSION OF MTE CORPORATION	
UNLESS OTHERWISE SPECIFIED DIMENSIONS ARE IN INCHES [MM] TOLERANCES ARE: ANGLES: ± 1° 1 PLACE .X: ± .1 [2.5] 2 PLACE .XX: ± .01 [0.25] 3 PLACE .XXX: ± .005 [0.127]		 N83 W13330 Leon Road Menomonee Falls, WI 53051 USA 800.455.4683 262.253.8200		DESCRIPTION LINE/LOAD REACTOR	
DRAWN KFL	DATE 9/28/05	CHECKED JM	DATE 07/01/15	SIZE D	DWG No. CD RL-13002
APPROVED JM	DATE 07/01/15	SCALE 1:2	REV 21	SHEET 1 OF 1	