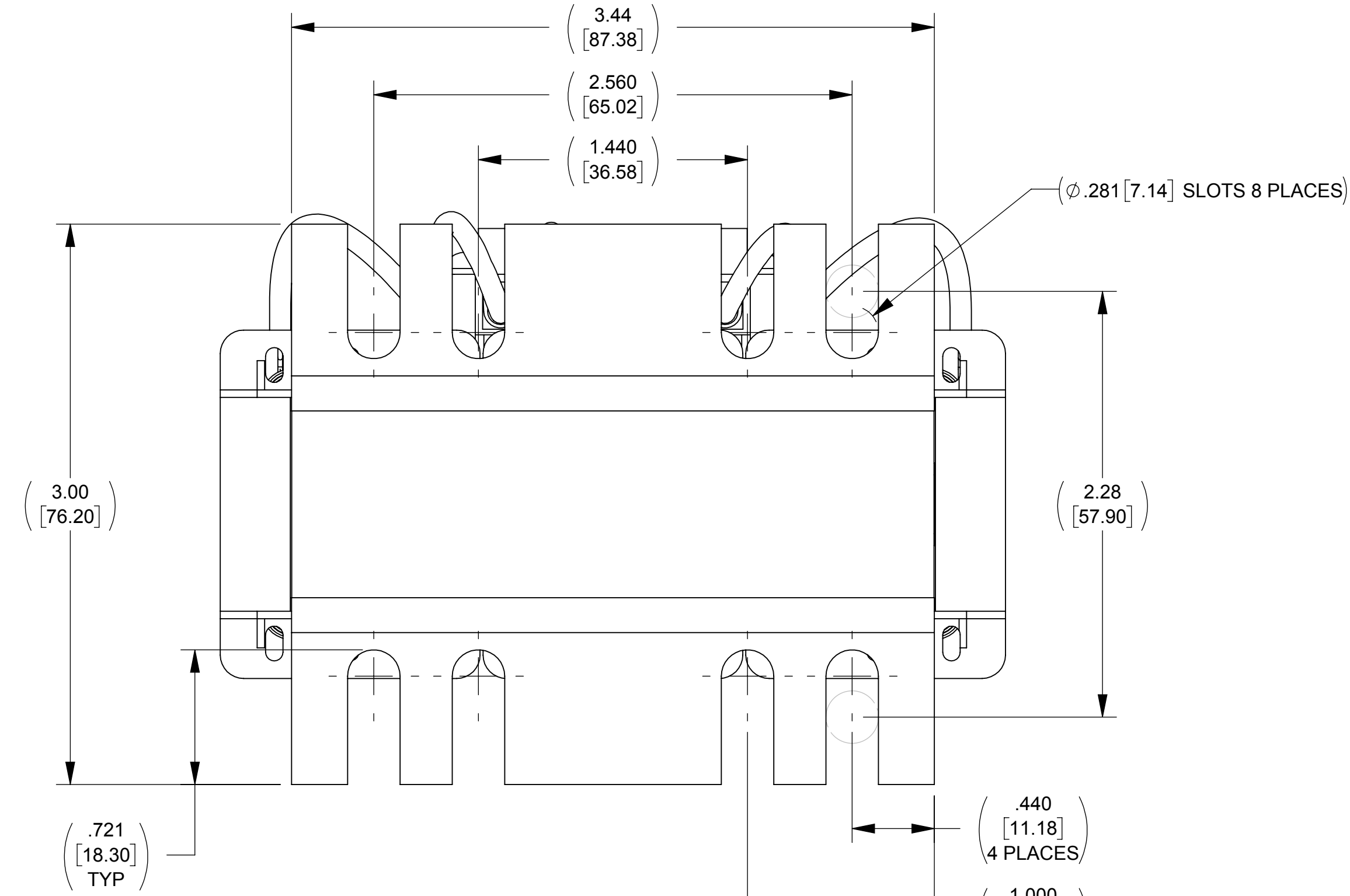
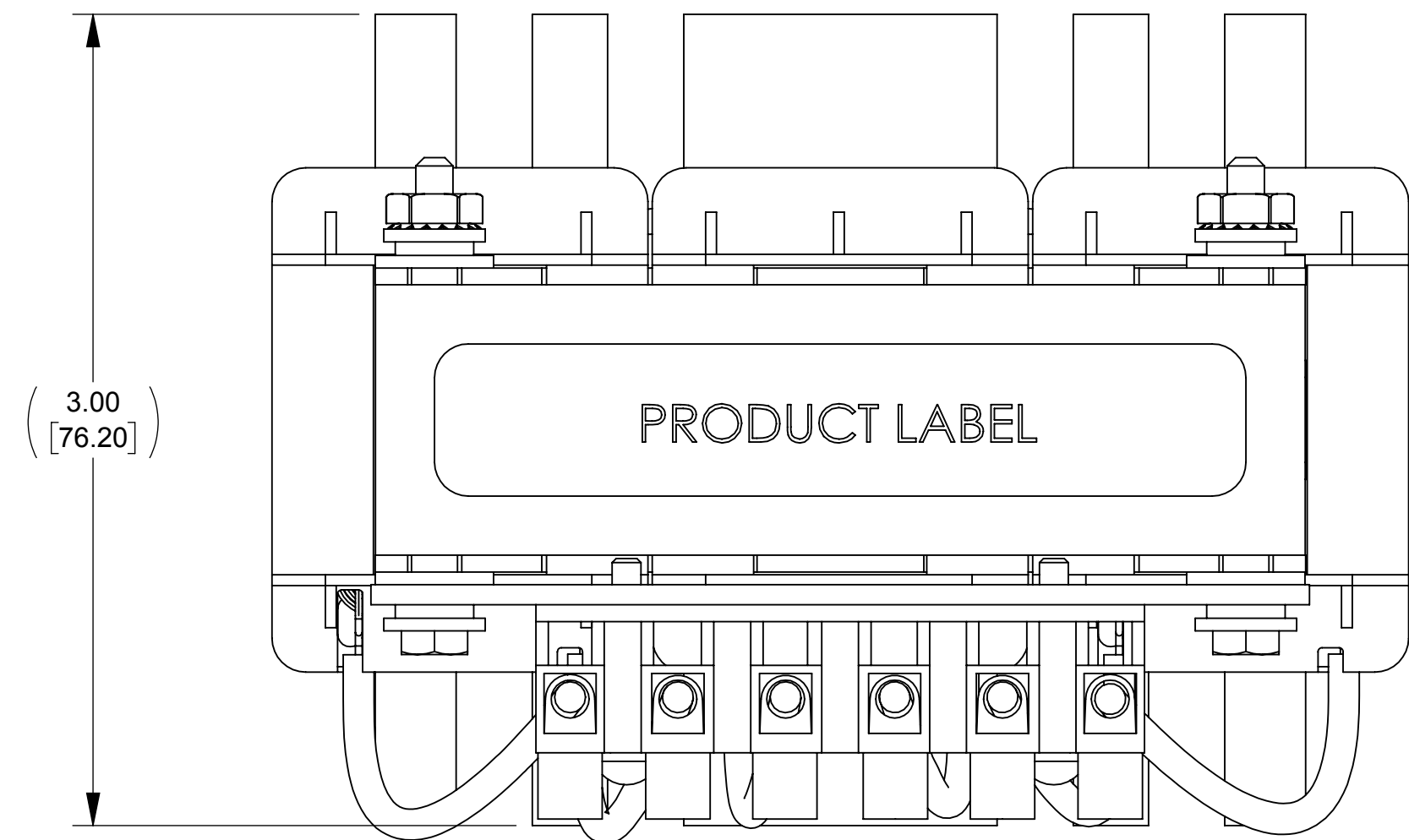
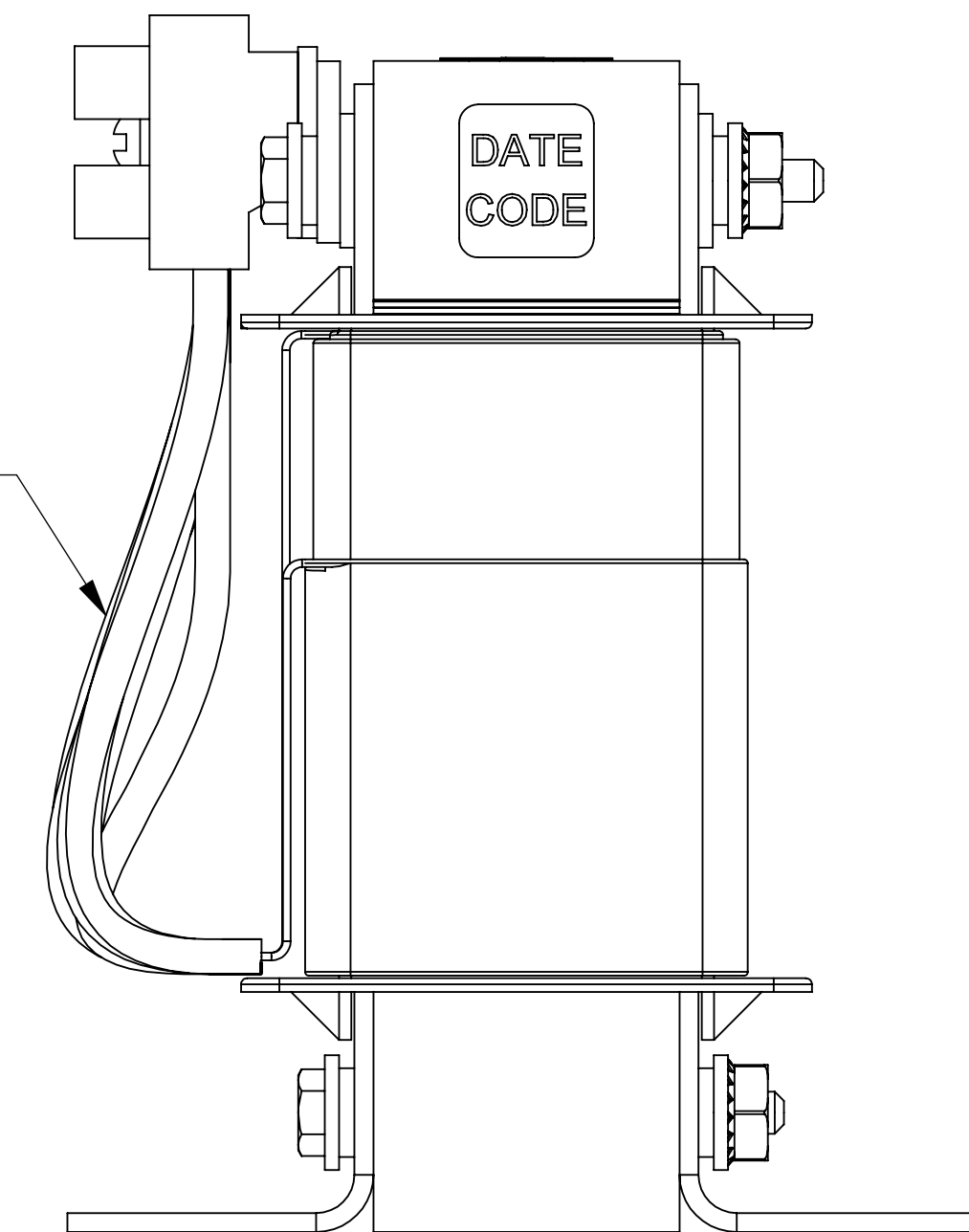


|              |            |              |
|--------------|------------|--------------|
| WEIGHT (LBS) | INDUCTANCE | LOSS (WATTS) |
| 4            | 100 mH     | 14.1         |

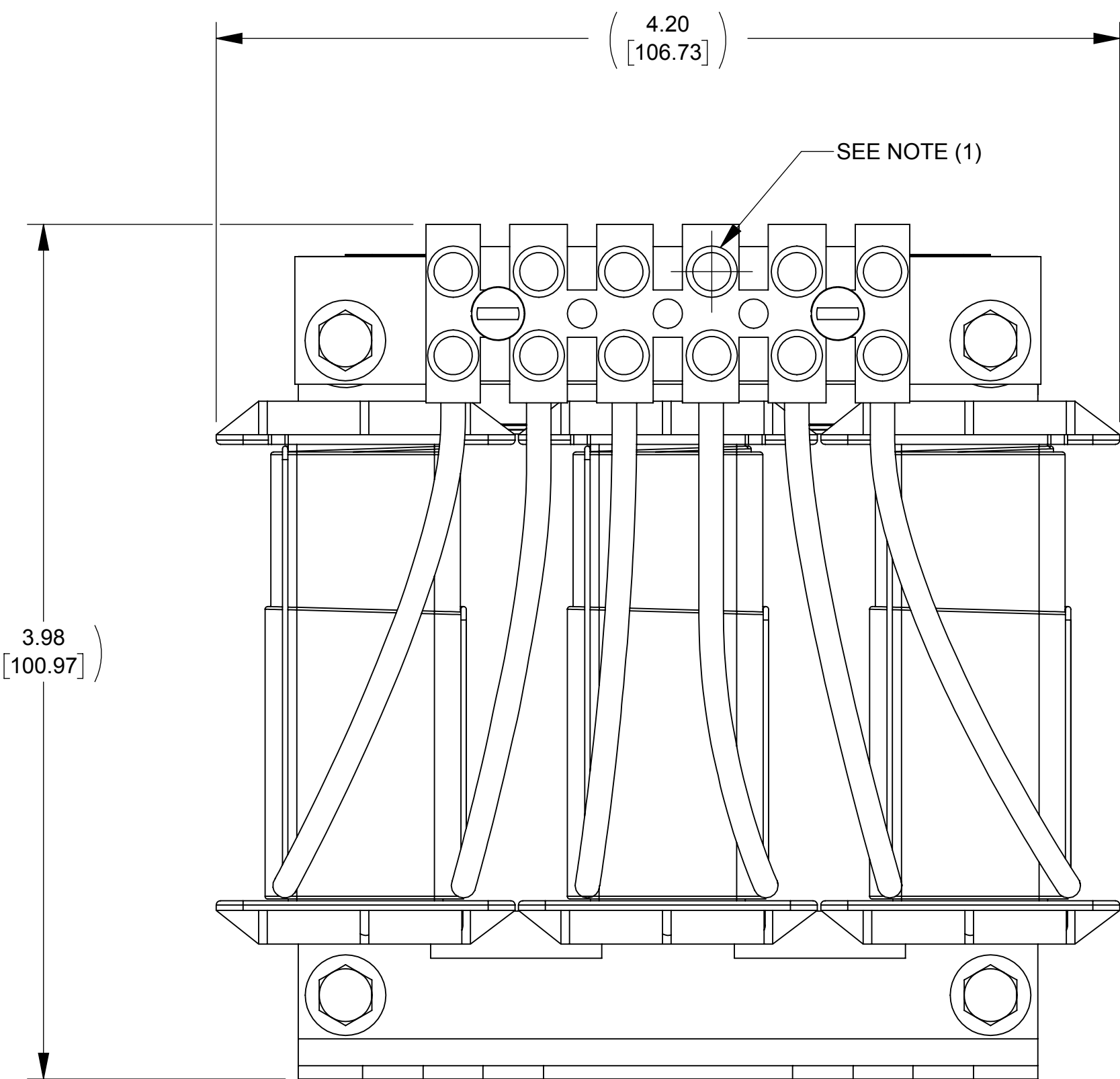
|        |  |        |          |
|--------|--|--------|----------|
| ECO No | DESCRIPTION                                    | REV BY | DATE     |
| M7227  | ECR M7227, CHANGE PART NAME TO 3 PHASE REACTOR | PDH    | 10/13/10 |



VIEW A-A



SEE NOTE (2)



SEE NOTE (1)

**NOTES:**

- 1) TERMINAL SCREW TORQUE: 4.5 IN-LBS MAX
- 2) WIRE RANGE: 22-10 AWG

|   |  |   |  |  |  |
|---|--|---|--|--|--|
| <p>THE COMPONENT, PART OR ASSEMBLY DESCRIBED IN THIS DOCUMENT MUST COMPLY WITH THE EU (EUROPEAN UNION) DIRECTIVE RoHS2</p> <p>CONTAINS &lt;0.1% OF ANY SVHC BY WEIGHT PER REACH REGULATION</p>          |  | <p>MATERIAL</p>                                     |  | <p>CONFIDENTIAL AND PROPRIETARY INFORMATION<br/>THIS DOCUMENT CONTAINS CONFIDENTIAL AND PROPRIETARY INFORMATION OF MTE CORPORATION AND MAY NOT BE USED, COPIED OR DISCLOSED TO OTHERS EXCEPT WITH THE AUTHORIZED WRITTEN PERMISSION OF MTE CORPORATION</p> |  |
| <p>UNLESS OTHERWISE SPECIFIED DIMENSIONS ARE IN INCHES [MM] TOLERANCES ARE:</p> <p>ANGLES: ± 1 °</p> <p>1 PLACE .X: ± .1 [2.5]</p> <p>2 PLACE .XX: ± .01 [0.25]</p> <p>3 PLACE .XXX: ± .005 [0.127]</p> |  | <p>DRAWN<br/>KFL</p> <p>CHECKED</p> <p>APPROVED</p> |  | <p>DATE<br/>02/06/03</p> <p>DATE</p> <p>DATE</p>   |  |
| <p>83 W13330 Leon Road<br/>Menomonee Falls, WI 53051 USA<br/>800.455.4683<br/>262.253.8200</p>  |  | <p>DATE CODE</p>                                    |  | <p>DESCRIPTION</p> <p>LINE/LOAD REACTOR(1AMPS 100mH)</p>   |  |
| <p>SCALE 5:3</p>  |  | <p>SIZE D</p>                                       |  | <p>DWG No. CD RL-00101</p>   |  |
|   |  |   |  | <p>REV 09</p>  |  |
|   |  |   |  | <p>SHEET 1 OF 1</p>  |  |



N83 W13330 Leon Road  
Menomonee Falls, WI 53051 USA  
800.455.4683  
262.253.8200