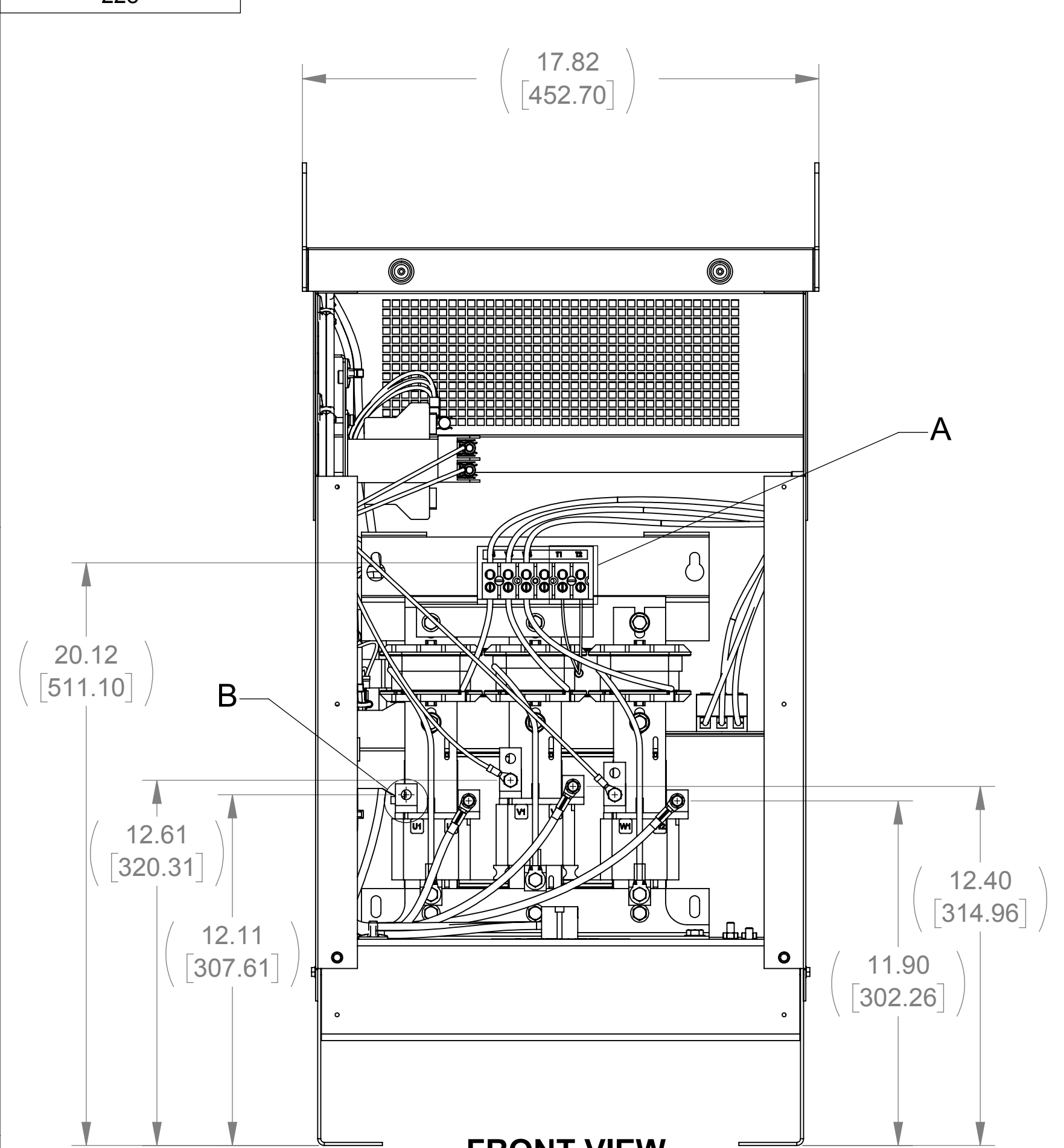
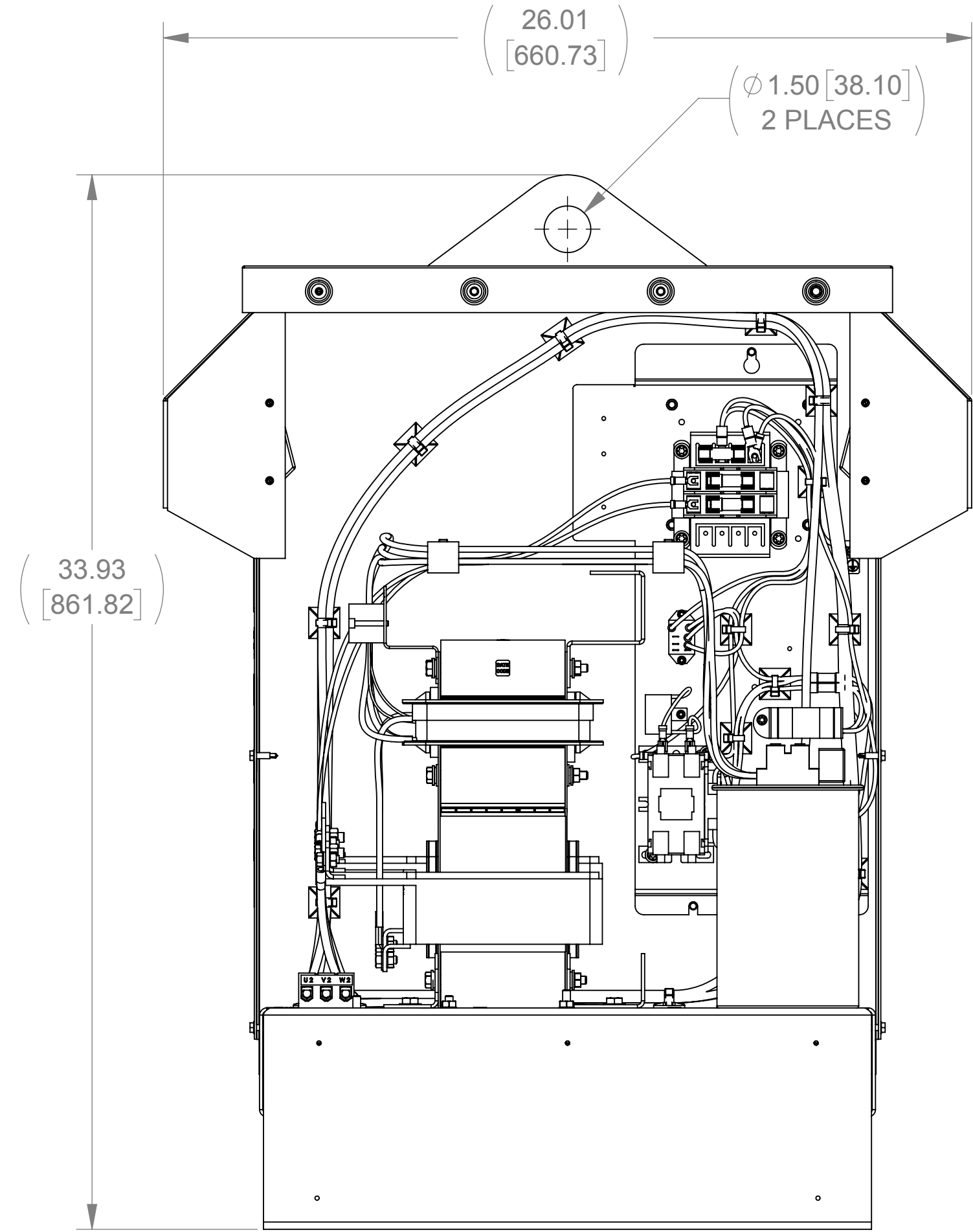


APPROX. WEIGHT (LBS)
228

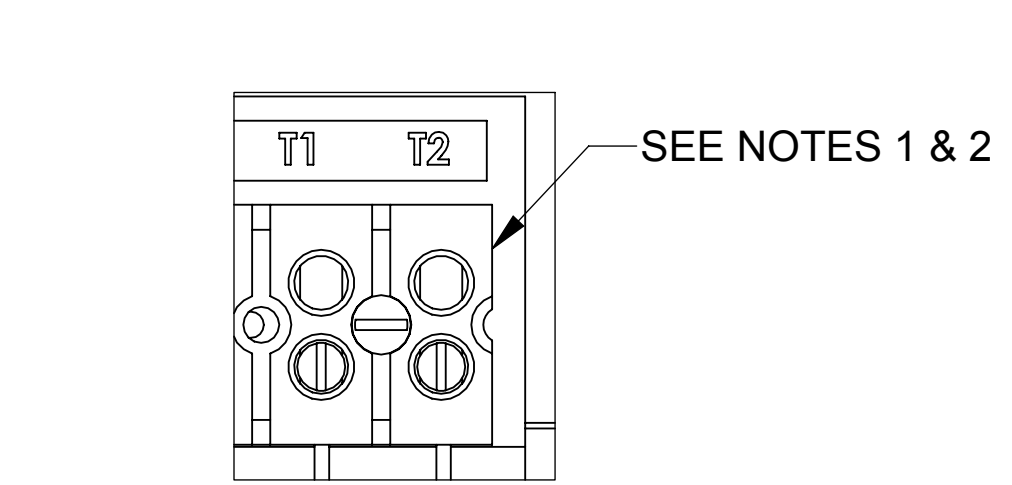
ECO No	DESCRIPTION	REV BY	DATE
M9064	UPDATE TO CURRENT DRAWING STANDARDS	MN	03/31/14



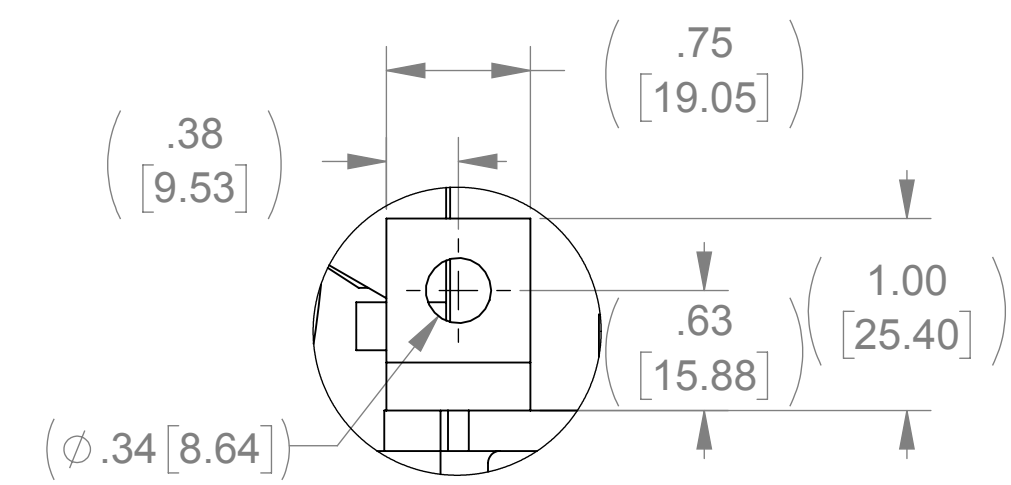
FRONT VIEW (PANEL REMOVED)



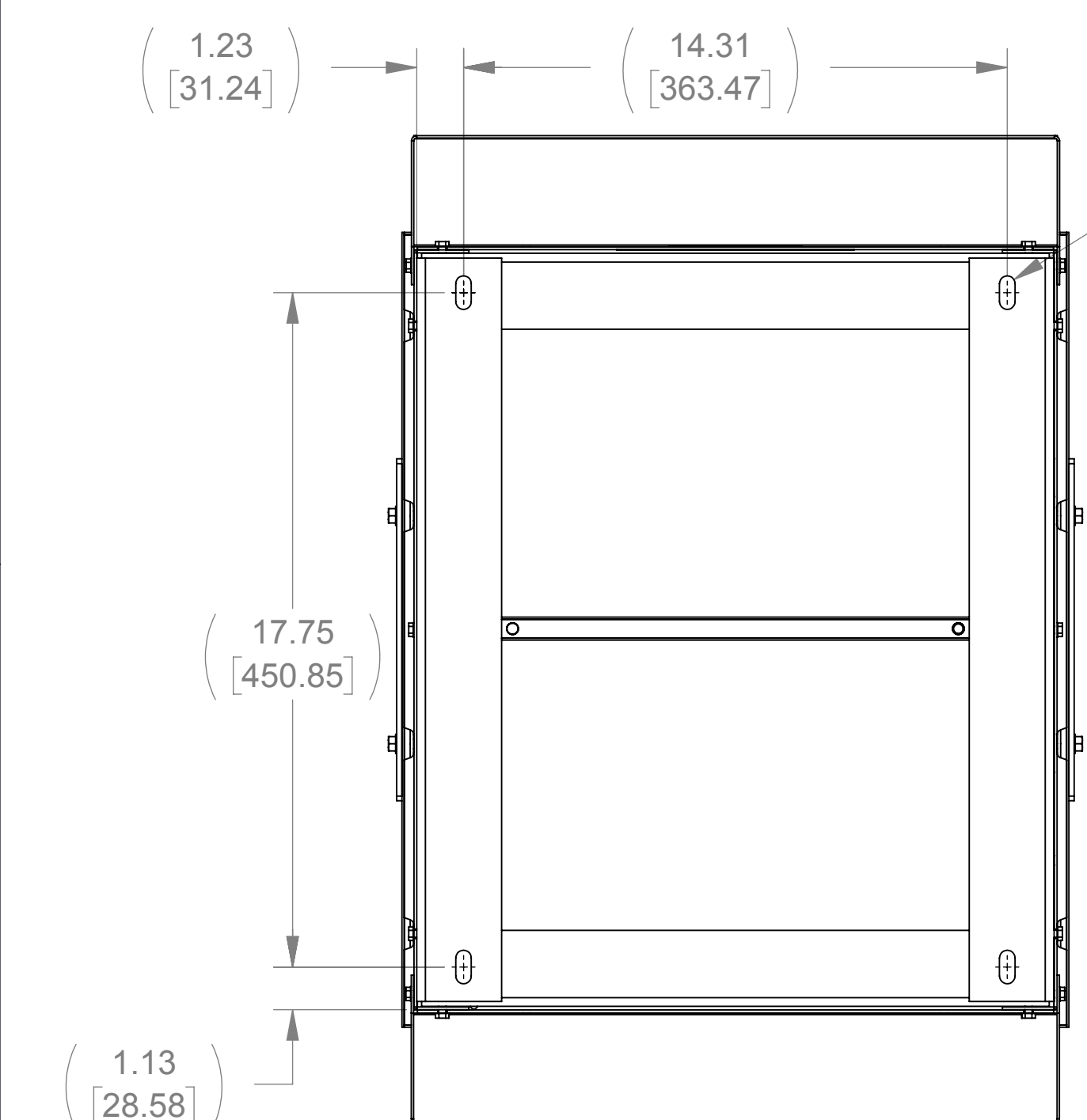
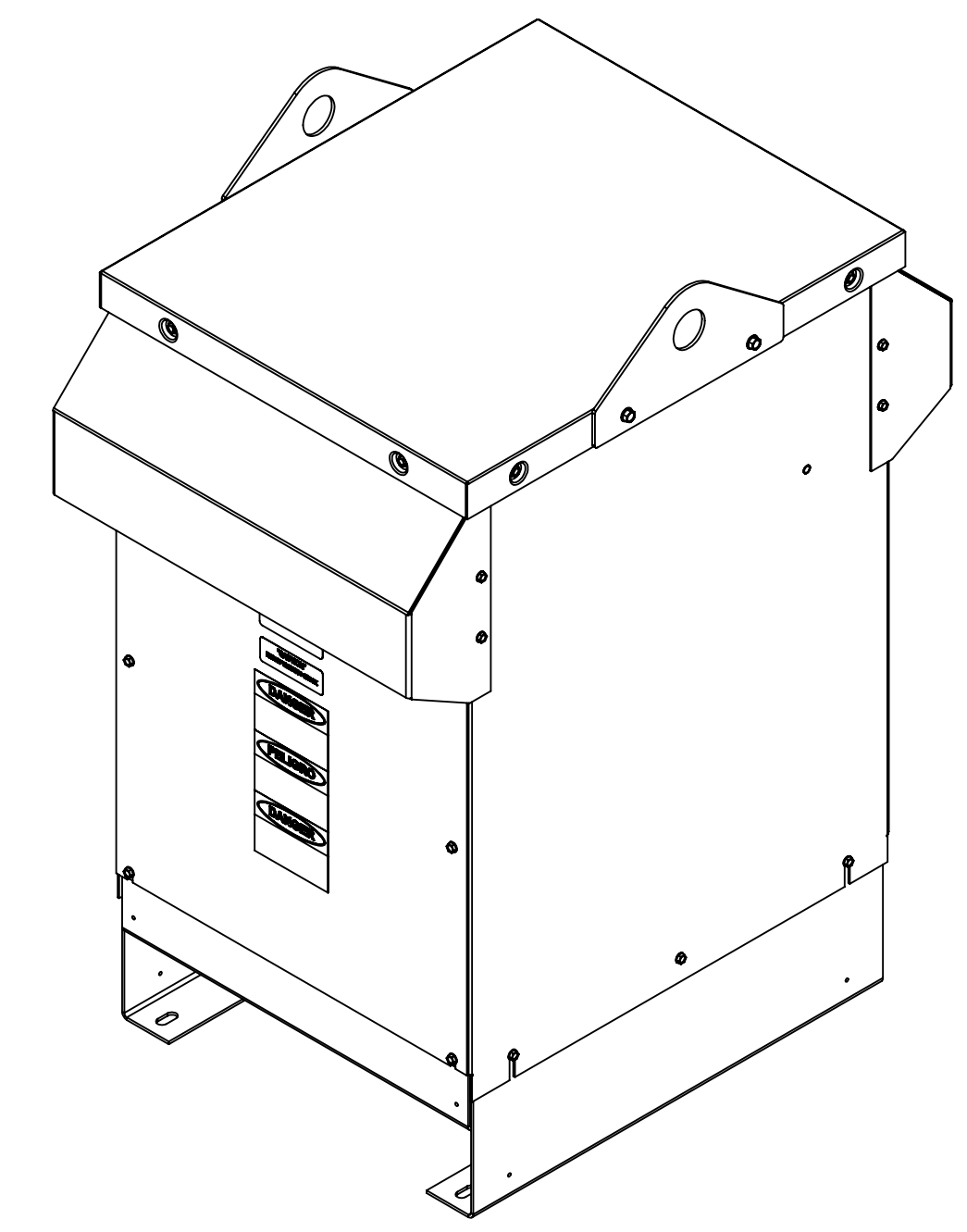
SIDE VIEW (PANELS REMOVED)



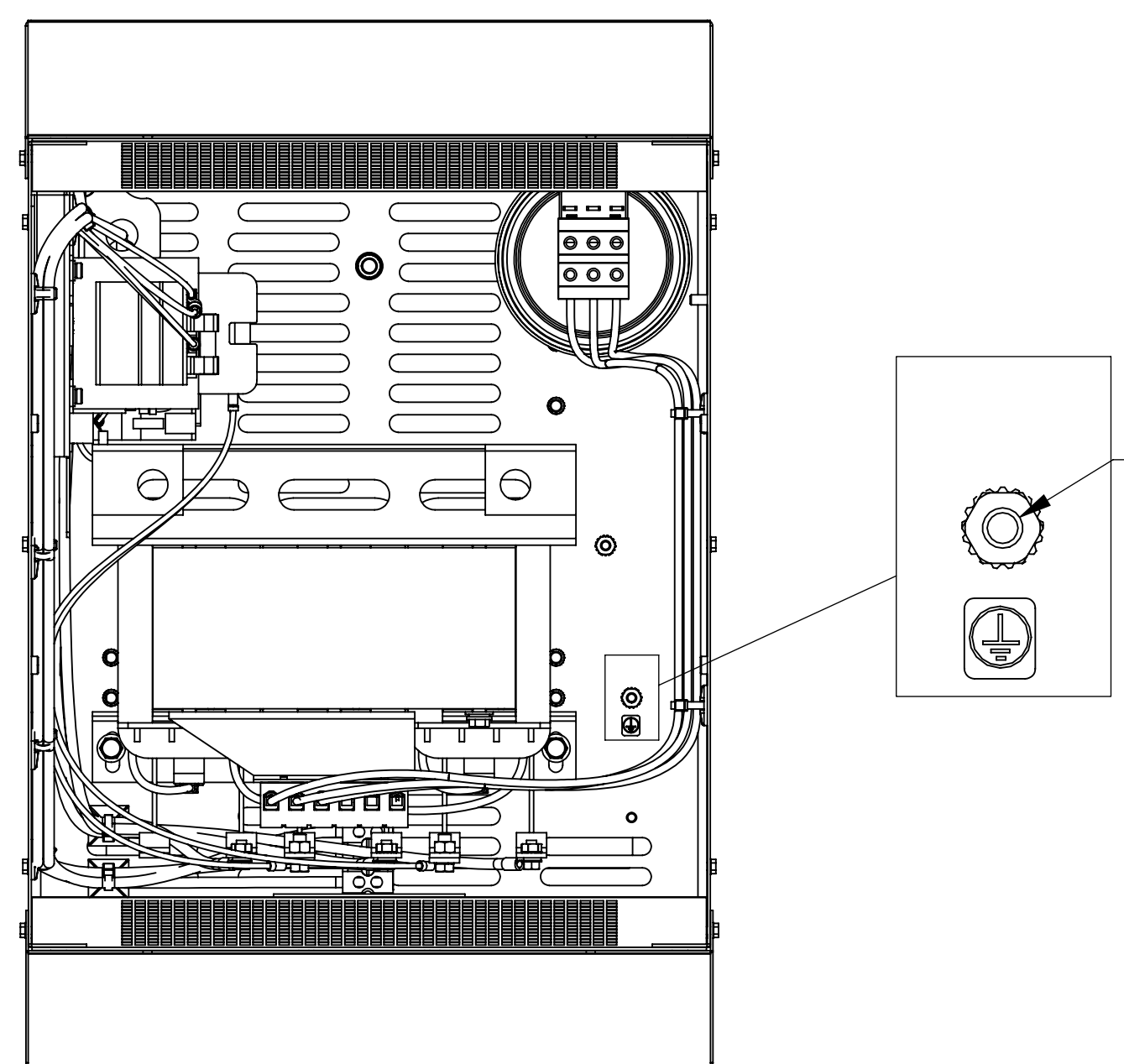
DETAIL A CUSTOMER CONNECTION DETAIL VIEW (THERMAL)



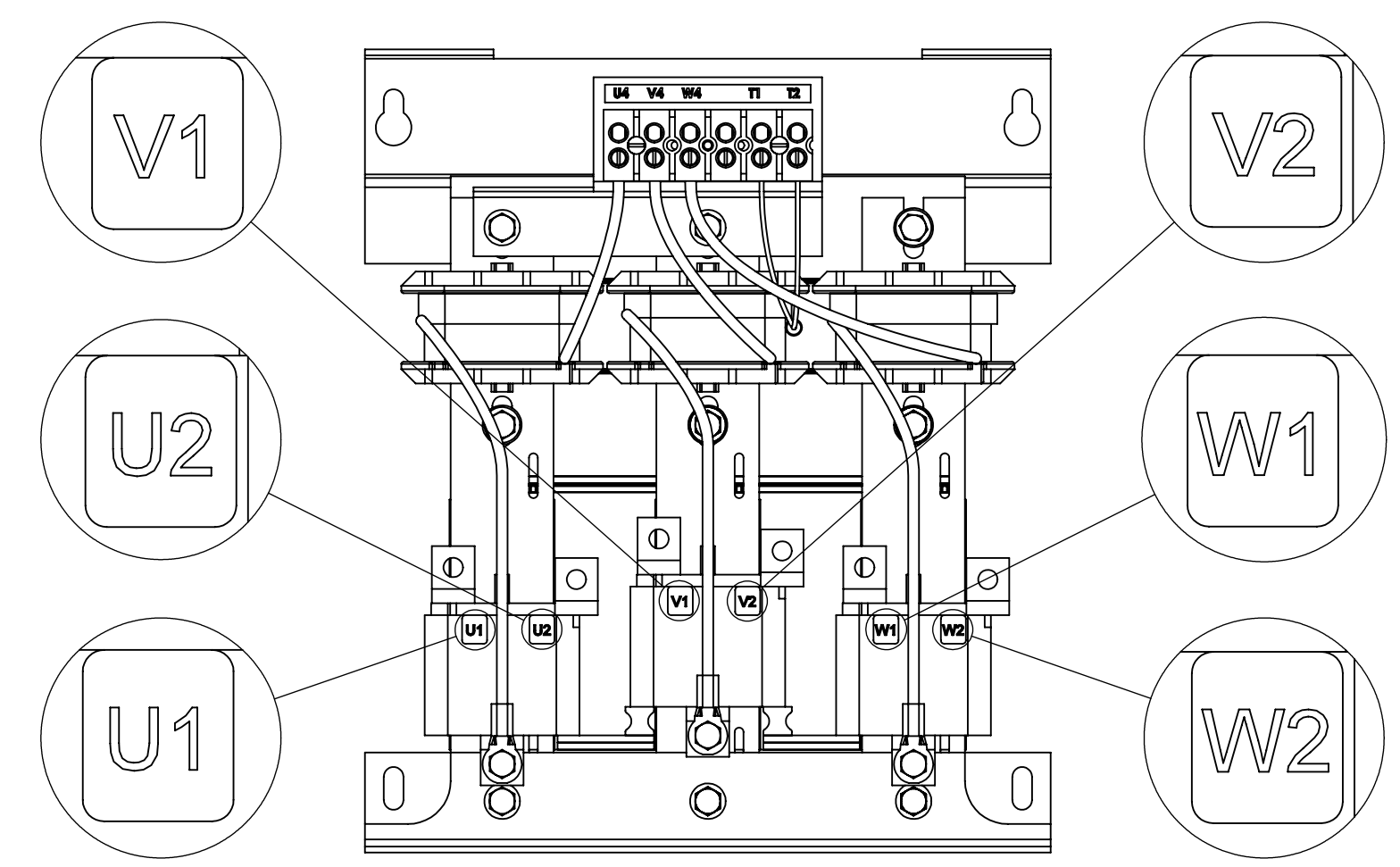
DETAIL B (6 PLACES)



BOTTOM VIEW



TOP VIEW (PANEL REMOVED)



CUSTOMER CONNECTION DETAIL VIEW

NOTES:

1. TERMINAL SCREW TIGHTENING TORQUE: 16 IN/LBS, MAX.
2. WIRE RANGE: 4-14 AWG.

THE COMPONENT, PART OR ASSEMBLY DESCRIBED IN THIS DOCUMENT MUST COMPLY WITH THE EU (EUROPEAN UNION) DIRECTIVE RoHS2 CONTAINS <0.1% OF ANY SVHC BY WEIGHT PER REACH REGULATION		MATERIAL DRAWN SU 04/09/13 CHECKED RH 04/02/14 APPROVED RH 04/02/14		CONFIDENTIAL AND PROPRIETARY INFORMATION THIS DOCUMENT CONTAINS CONFIDENTIAL AND PROPRIETARY INFORMATION OF MTE CORPORATION AND MAY NOT BE USED, COPIED OR DISCLOSED TO OTHERS EXCEPT WITH THE AUTHORIZED WRITTEN PERMISSION OF MTE CORPORATION DESCRIPTION MATRIX AP 52A 600V 60HZ FILTER, NEMA 3R ENCLOSURE	
UNLESS OTHERWISE SPECIFIED DIMENSIONS ARE IN INCHES (MM) TOLERANCES ARE: ANGLES: ± 1° 1 PLACE .X: ± .1 [2.5] 2 PLACE .XX: ± .03 [0.76] 3 PLACE .XXX: ± .010 [0.254]		 N83 W13330 Leon Road Menomonie Falls, WI 53051 USA 800.455.4683 262.253.8200		SIZE D DWG No. CD MAPW0052E REV 02 SCALE 1:4 SHEET 1 OF 1	